

For Research Use Only

Lamin B1 Monoclonal antibody, PBS Only (Detector)

Catalog Number: 66095-2-PBS



Basic Information

Catalog Number:

66095-2-PBS

Concentration:

1 mg/ml

Source:

Mouse

Isotype:

IgG1

Immunogen Catalog Number:

AG20522

GenBank Accession Number:

BC012295

GeneID (NCBI):

4001

ENSEMBL Gene ID:

ENSG00000113368

UNIPROT ID:

P20700

Full Name:

lamin B1

Calculated MW:

66 kDa

Purification Method:

Protein G Magarose purification

CloneNo.:

3F4D6

Applications

Tested Applications:

Cytometric bead array, Indirect ELISA, Sample test

Species Specificity:

human

Background Information

Storage

Storage:

Store at -80°C.

The product is shipped with ice packs. Upon receipt, store it immediately at -80°C

Storage Buffer:

PBS only, pH7.3

For technical support and original validation data for this product please contact:

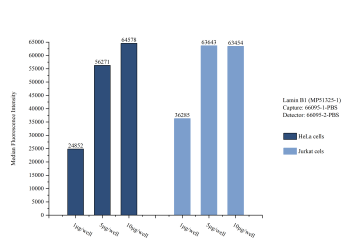
T: 4006900926

E: Proteintech-CN@ptglab.com

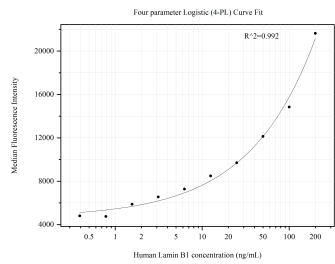
W: ptgcn.com

This product is exclusively available under Proteintech Group brand and is not available to purchase from any other manufacturer.

Selected Validation Data



Sample test of MP51325-1, Lamin B1 Monoclonal Matched Antibody Pair, PBS Only. Capture antibody: 66095-1-PBS. Detection antibody: 66095-2-PBS.



Cytometric bead array standard curve of MP51325-1, Lamin B1 Monoclonal Matched Antibody Pair, PBS Only. Capture antibody: 66095-1-PBS. Detection antibody: 66095-2-PBS. Standard: Ag20522. Range: 0.391-200 ng/mL.