

For Research Use Only

Lamin B1 Monoclonal antibody, PBS Only (Capture)

Catalog Number: 66095-1-PBS

Featured Product



Basic Information

Catalog Number:

66095-1-PBS

Concentration:

1mg/ml

Source:

Mouse

Isotype:

IgG1

Immunogen Catalog Number:

AG20522

GenBank Accession Number:

BC012295

GeneID (NCBI):

4001

ENSEMBL Gene ID:

ENSG00000113368

UNIPROT ID:

P20700

Full Name:

lamin B1

Calculated MW:

66 kDa

Observed MW:

66-70 kDa

Purification Method:

Protein G purification

CloneNo.:

3C10G12

Applications

Tested Applications:

WB, IHC, IF/ICC, IF-P, FC (Intra), IP, Cytometric bead array, Indirect ELISA, Sample test

Species Specificity:

human, mouse, rat

Background Information

Lamins are components of the nuclear lamina, a fibrous layer on the nucleoplasmic side of the inner nuclear membrane, which is thought to provide a framework for the nuclear envelope and may also interact with chromatin. The nuclear lamina consists of a two-dimensional matrix of proteins located next to the inner nuclear membrane. The lamin family of proteins make up the matrix and are highly conserved in evolution. During mitosis, the lamina matrix is reversibly disassembled as the lamin proteins are phosphorylated. Vertebrate lamins consist of two types, A and B. This gene encodes one of the two B type proteins, B1. This protein is not suitable for samples where the nuclear envelope has been removed.

Storage

Storage:

Store at -80°C.

The product is shipped with ice packs. Upon receipt, store it immediately at -80°C

Storage Buffer:

PBS only, pH7.3

For technical support and original validation data for this product please contact:

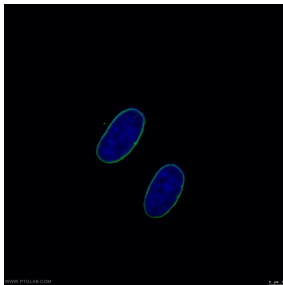
T: 4006900926

E: Proteintech-CN@ptglab.com

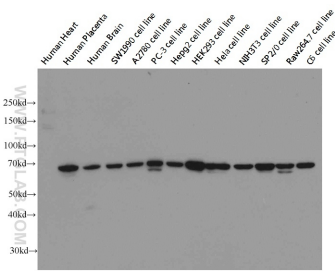
W: ptgcn.com

This product is exclusively available under Proteintech Group brand and is not available to purchase from any other manufacturer.

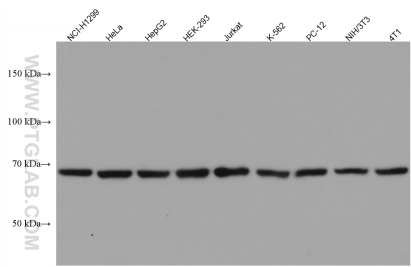
Selected Validation Data



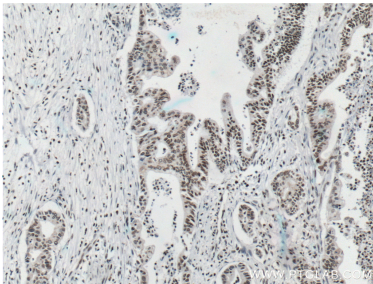
Immunofluorescent analysis of (-20°C Ethanol) fixed HepG2 cells using 66095-1-Ig (Lamin B1 antibody) at dilution of 1:500 and CoraLite488-Conjugated AffiniPure Goat Anti-Mouse IgG(H+L). This data was developed using the same antibody clone with 66095-1-PBS in a different storage buffer formulation.



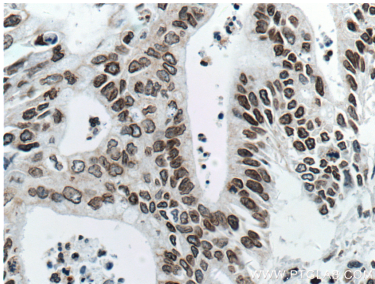
Western blot on multiple cells/tissues with anti-LMNB1 (66095-1-Ig) at dilution 1:20000. This data was developed using the same antibody clone with 66095-1-PBS in a different storage buffer formulation.



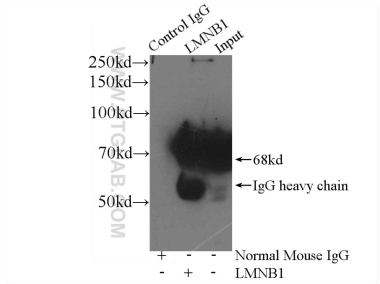
Various lysates were subjected to SDS PAGE followed by western blot with 66095-1-Ig (Lamin B1 antibody) at dilution of 1:100000 incubated at room temperature for 1.5 hours. This data was developed using the same antibody clone with 66095-1-PBS in a different storage buffer formulation.



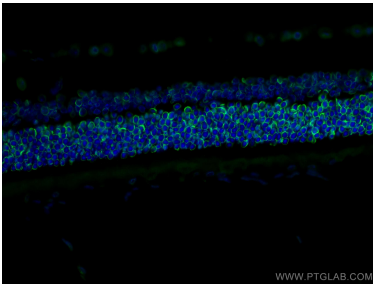
Immunohistochemical analysis of paraffin-embedded human pancreas cancer tissue slide using 66095-1-Ig (Lamin B1 antibody) at dilution of 1:1000 (under 10x lens). Heat mediated antigen retrieval with Tris-EDTA buffer (pH 9.0). This data was developed using the same antibody clone with 66095-1-PBS in a different storage buffer formulation.



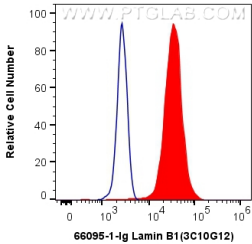
Immunohistochemical analysis of paraffin-embedded human pancreas cancer tissue slide using 66095-1-Ig (Lamin B1 antibody) at dilution of 1:1000 (under 40x lens). Heat mediated antigen retrieval with Tris-EDTA buffer (pH 9.0). This data was developed using the same antibody clone with 66095-1-PBS in a different storage buffer formulation.



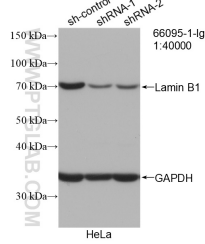
IP result of anti-Lamin B1 (IP:66095-1-Ig, 4ug; Detection:66095-1-Ig 1:20000) with HeLa cells lysate 3560ug. This data was developed using the same antibody clone with 66095-1-PBS in a different storage buffer formulation.



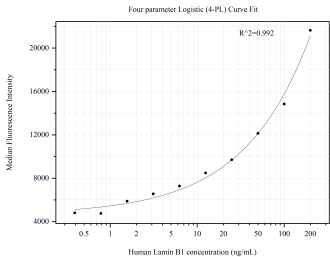
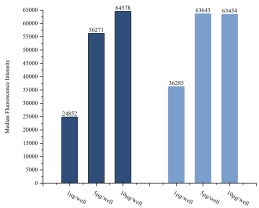
Immunofluorescent analysis of (4% PFA) fixed mouse eye tissue using Lamin B1 antibody (66095-1-Ig, Clone: 3C10G12) at dilution of 1:400 and CoraLite®488-Conjugated AffiniPure Goat Anti-Mouse IgG(H+L). This data was developed using the same antibody clone with 66095-1-PBS in a different storage buffer formulation.



1X10⁶ HeLa cells were intracellularly stained with 0.4 ug Anti-Human Lamin B1 (66095-1-Ig, Clone:3C10G12) and CoraLite®488-Conjugated AffiniPure Goat Anti-Mouse IgG(H+L) at dilution 1:1000 (red), or 0.4 ug Mouse IgG1 Isotype Control (MOPC-21) (65124-1-Ig, Clone: MOPC-21) (blue). Cells were fixed and permeabilized with Transcription Factor Staining Buffer Kit (PF00011). This data was developed using the same antibody clone with 66095-1-PBS in a



WB result of Lamin B1 antibody (66095-1-Ig; 1:40000; incubated at room temperature for 1.5 hours) with sh-Control and sh-Lamin B1 transfected HeLa cells. This data was developed using the same antibody clone with 66095-1-PBS in a different storage buffer formulation.



Sample test of MP51325-1, Lamin B1 Monoclonal Matched Antibody Pair, PBS Only. Capture antibody: 66095-1-PBS. Detection antibody: 66095-2-PBS.

Cytometric bead array standard curve of MP51325-1, Lamin B1 Monoclonal Matched Antibody Pair, PBS Only. Capture antibody: 66095-1-PBS. Detection antibody: 66095-2-PBS. Standard: Ag20522. Range: 0.391-200 ng/mL