

For Research Use Only

Caspase 8/P43/P18 Monoclonal antibody, PBS Only

Catalog Number: 66093-1-PBS

Featured Product



Basic Information

Catalog Number:

66093-1-PBS

Concentration:

1mg/ml

Source:

Mouse

Isotype:

IgG2b

Immunogen Catalog Number:

AG20524

GenBank Accession Number:

BC028223

GeneID (NCBI):

841

UNIPROT ID:

Q14790

Full Name:

caspase 8, apoptosis-related cysteine peptidase

Calculated MW:

538 aa, 62 kDa

Observed MW:

53-57 kDa, 32-45 kDa, 18 kDa

Purification Method:

Protein A purification

CloneNo.:

2B9H8

Applications

Tested Applications:

WB, IHC, IF/ICC, IP, Indirect ELISA

Species Specificity:

human

Background Information

Caspase 8, also named as MCH5, MACH, FLICE, and CAP4, belongs to the peptidase C14A family. It may participate in the GZMB apoptotic pathways and functions as an upstream regulator in a-bisabolol-induced apoptosis. Caspase 8 catalyzes an essential intermediate step in the ubiquitination and proteasome-mediated degradation of IRF3 (PMID:21816816). It may control diabetic embryopathy-associated apoptosis via regulation of the Bid-stimulated mitochondrion/caspase-9 pathway (PMID:19194987). Caspase 8 is expressed as nine isoforms by alternative splicing with the molecular mass from 26 kDa to 62 kDa. This antibody can recognize pro- and cleaved-caspase 8.

Storage

Storage:

Store at -80°C.

The product is shipped with ice packs. Upon receipt, store it immediately at -80°C

Storage Buffer:

PBS Only

For technical support and original validation data for this product please contact:

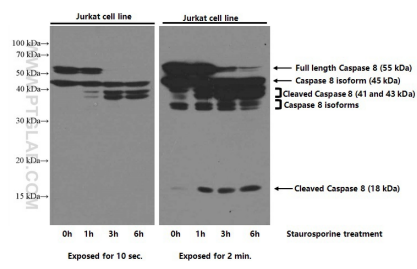
T: 4006900926

E: Proteintech-CN@ptglab.com

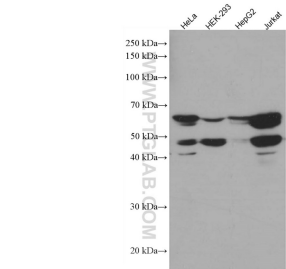
W: ptgcn.com

This product is exclusively available under Proteintech Group brand and is not available to purchase from any other manufacturer.

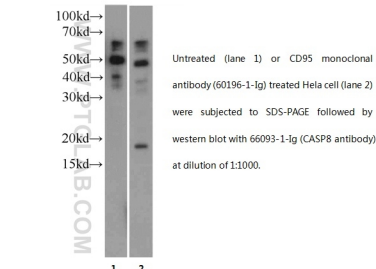
Selected Validation Data



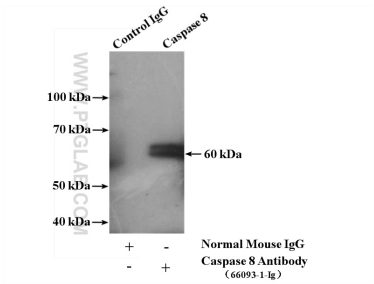
Untreated and Staurosporine treated Jurkat cells were subjected to SDS PAGE followed by western blot with 66093-1-Ig (Caspase 8/P43/P18 antibody) at dilution of 1:5000 incubated at room temperature for 1.5 hours. This data was developed using the same antibody clone with 66093-1-PBS in a different storage buffer formulation.



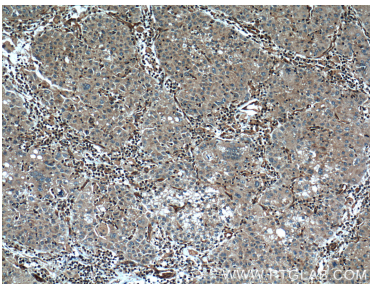
Various lysates were subjected to SDS PAGE followed by western blot with 66093-1-Ig (Caspase 8/P43/P18 antibody) at dilution of 1:10000 incubated at room temperature for 1.5 hours. This data was developed using the same antibody clone with 66093-1-PBS in a different storage buffer formulation.



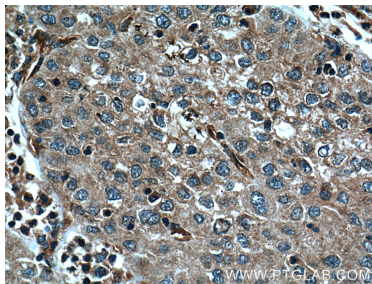
WB result of Caspase 8/P43/P18 with normal and apoptosis HeLa cell. P18 can be get in the apoptosis cell. 60kd,50kd and 45kd bands are some isoforms of precursor CASP8. This data was developed using the same antibody clone with 66093-1-PBS in a different storage buffer formulation.



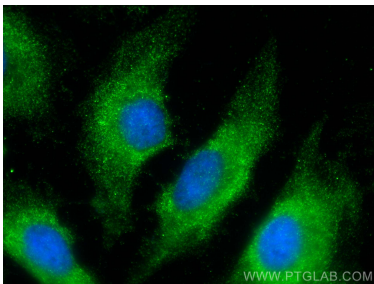
IP result of anti-Caspase 8/P43/P18 (IP:66093-1-Ig, 5ug; Detection:66093-1-Ig 1:500) with HepG2 cells lysate 2400ug. This data was developed using the same antibody clone with 66093-1-PBS in a different storage buffer formulation.



Immunohistochemical analysis of paraffin-embedded human liver cancer tissue slide using 66093-1-Ig (Caspase 8/P43/P18 Antibody) at dilution of 1:200 (under 10x lens). Heat mediated antigen retrieval with Tris-EDTA buffer (pH 9.0). This data was developed using the same antibody clone with 66093-1-PBS in a different storage buffer formulation.



Immunohistochemical analysis of paraffin-embedded human liver cancer tissue slide using 66093-1-Ig (Caspase 8/P43/P18 Antibody) at dilution of 1:200 (under 40x lens). Heat mediated antigen retrieval with Tris-EDTA buffer (pH 9.0). This data was developed using the same antibody clone with 66093-1-PBS in a different storage buffer formulation.



Immunofluorescent analysis of (-20°C Ethanol) fixed HeLa cells using Caspase 8/P43/P18 antibody (66093-1-Ig, Clone: 2B9H8) at dilution of 1:800 and CoraLite®488-Conjugated AffiniPure Goat Anti-Mouse IgG(H+L) (SA00013-1). This data was developed using the same antibody clone with 66093-1-PBS in a different storage buffer formulation.