

# Factor XII Monoclonal antibody, PBS Only

Catalog Number: 66089-1-PBS

## Basic Information

<b>Catalog Number:</b> 66089-1-PBS	<b>GenBank Accession Number:</b> BC012390	<b>Purification Method:</b> Protein A purification
<b>Size:</b> 1mg/ml	<b>GeneID (NCBI):</b> 2161	<b>CloneNo.:</b> 2E2F11
<b>Source:</b> Mouse	<b>UNIPROT ID:</b> P00748	
<b>Isotype:</b> IgG2b	<b>Full Name:</b> coagulation factor XII (Hageman factor)	
<b>Immunogen Catalog Number:</b> AG3401	<b>Calculated MW:</b> 615 aa, 68 kDa	
	<b>Observed MW:</b> 28 kDa	

## Applications

**Tested Applications:**  
WB, IHC, IF/ICC, IF-P, Indirect ELISA

**Species Specificity:**  
human, mouse

## Background Information

Factor XII (F XII, Hageman factor) is a 80 kDa, single chain glycoprotein that circulates in blood as an inactive zymogen. F XII plays an important role in blood coagulation, fibrinolysis, and kinin generation. Factor XII is activated by kallikrein in alpha-factor XIIa, which is further converted by trypsin into beta-factor XIIa. Alpha-factor XIIa is composed of a 52 kDa NH<sub>2</sub>-terminal heavy chain, called coagulation factor XIIa heavy chain, and a 28 kDa COOH-terminal light chain, called coagulation factor XIIa light chain, connected by a disulfide bond. Beta-factor XIIa is composed of 2 chains linked by a disulfide bond, an N-terminal nonapeptide, called beta-factor XIIa part 1, and coagulation factor XIIa light chain, also known in this context as beta-factor XIIa part 2.

## Storage

**Storage:**  
Store at -80°C.  
**The product is shipped with ice packs. Upon receipt, store it immediately at -80°C**

**Storage Buffer:**  
PBS Only

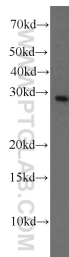
For technical support and original validation data for this product please contact:

T: 4006900926

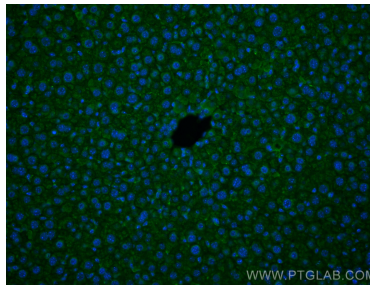
E: [Proteintech-CN@ptglab.com](mailto:Proteintech-CN@ptglab.com)W: [ptgcn.com](http://ptgcn.com)

This product is exclusively available under Proteintech Group brand and is not available to purchase from any other manufacturer.

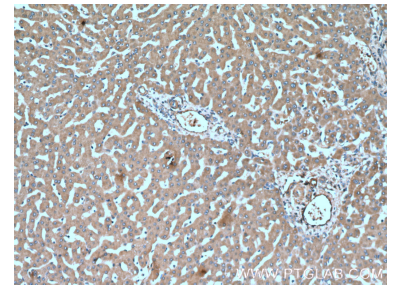
## Selected Validation Data



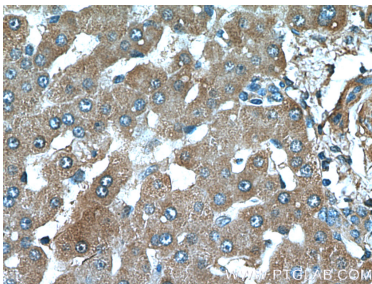
K-562 cells were subjected to SDS PAGE followed by western blot with 66089-1-Ig (Factor XII antibody) at dilution of 1:1000 incubated at room temperature for 1.5 hours. This data was developed using the same antibody clone with 66089-1-PBS in a different storage buffer formulation.



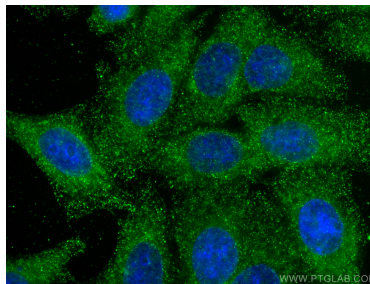
Immunofluorescent analysis of (4% PFA) fixed mouse liver tissue using Factor XII antibody (66089-1-Ig, Clone: 2E2F11) at dilution of 1:400 and CoraLite®488-Conjugated AffiniPure Goat Anti-Mouse IgG(H+L). This data was developed using the same antibody clone with 66089-1-PBS in a different storage buffer formulation.



Immunohistochemical analysis of paraffin-embedded human liver tissue slide using 66089-1-Ig (Factor XII antibody at dilution of 1:200 (under 10x lens). This data was developed using the same antibody clone with 66089-1-PBS in a different storage buffer formulation.



Immunohistochemical analysis of paraffin-embedded human liver tissue slide using 66089-1-Ig (Factor XII antibody at dilution of 1:200 (under 40x lens). This data was developed using the same antibody clone with 66089-1-PBS in a different storage buffer formulation.



Immunofluorescent analysis of (-20°C Ethanol) fixed HepG2 cells using Factor XII antibody (66089-1-Ig, Clone: 2E2F11) at dilution of 1:1000 and CoraLite®488-Conjugated AffiniPure Goat Anti-Mouse IgG(H+L). This data was developed using the same antibody clone with 66089-1-PBS in a different storage buffer formulation.