

# NCALD Monoclonal antibody

Catalog Number: 66088-1-Ig

## Basic Information

Catalog Number:	66088-1-Ig	GenBank Accession Number:	BC036098	Purification Method:	Protein A purification
Size:	1053 $\mu$ g/ml	GeneID (NCBI):	83988	CloneNo.:	6B4E10
Source:	Mouse	UNIPROT ID:	P61601	Recommended Dilutions:	WB 1:500-1:3200
Isotype:	IgG2a	Full Name:	neurocalcin delta	IHC 1:20-1:200	IF/ICC 1:50-1:500
Immunogen Catalog Number:	AG18760	Calculated MW:	193 aa, 22 kDa		
		Observed MW:	22 kDa		

## Applications

**Tested Applications:**  
IF/ICC, IHC, WB, ELISA

**Species Specificity:**  
human, mouse, pig, rat

**Note-IHC:** suggested antigen retrieval with **TE buffer pH 9.0**; (\*) Alternatively, antigen retrieval may be performed with **citrate buffer pH 6.0**

### Positive Controls:

**WB** : fetal human brain tissue, human brain tissue, pig cerebellum tissue, pig brain tissue, rat brain tissue, mouse brain tissue, rat cerebellum tissue, mouse cerebellum tissue

**IHC** : human cerebellum tissue, mouse cerebellum tissue, human testis tissue, mouse brain tissue

**IF/ICC** : HeLa cells,

## Background Information

NCALD(Neurocalcin-delta) is a member of the EF-hand calcium-binding protein superfamily. It may be involved in the calcium-dependent regulation of rhodopsin phosphorylation. It is a high-affinity  $\text{Ca}^{2+}$  sensor ( $K_d$  of approx. 0.6  $\mu\text{M}$ ), which is most abundantly expressed in the Purkinje cells of the cerebellum (PMID:11964161). This antibody is specific to NCALD.

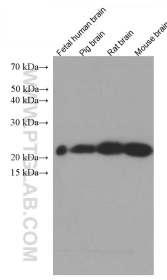
## Storage

**Storage:**  
Store at  $-20^\circ\text{C}$ . Stable for one year after shipment.

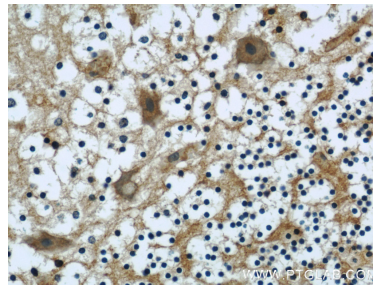
**Storage Buffer:**  
PBS with 0.02% sodium azide and 50% glycerol pH 7.3.

Aliquoting is unnecessary for  $-20^\circ\text{C}$  storage

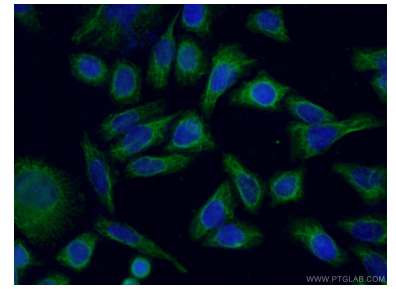
## Selected Validation Data



Various lysates were subjected to SDS PAGE followed by western blot with 66088-1-Ig (NCALD antibody) at dilution of 1:1600 incubated at room temperature for 1.5 hours.



Immunohistochemical analysis of paraffin-embedded human cerebellum using 66088-1-Ig(NCALD antibody) at dilution of 1:50 (under 40x lens).



Immunofluorescent analysis of (-20°C Ethanol) fixed HeLa cells using 66088-1-Ig (NCALD antibody) at dilution of 1:50 and Alexa Fluor 488-Conjugated AffiniPure Goat Anti-Mouse IgG(H+L).