

For Research Use Only

# Serum amyloid P component Monoclonal antibody

Catalog Number: 66084-1-Ig **1 Publications**



## Basic Information

<b>Catalog Number:</b> 66084-1-Ig	<b>GenBank Accession Number:</b> BC007058	<b>Purification Method:</b> Protein A purification
<b>Size:</b> 1000 ug/ml	<b>GeneID (NCBI):</b> 325	<b>CloneNo.:</b> 1A1D10
<b>Source:</b> Mouse	<b>UNIPROT ID:</b> P02743	<b>Recommended Dilutions:</b> WB 1:500-1:2000 IHC 1:50-1:500 IF-P 1:200-1:800
<b>Isotype:</b> IgG2b	<b>Full Name:</b> amyloid P component, serum	
<b>Immunogen Catalog Number:</b> AG14957	<b>Calculated MW:</b> 223 aa, 25 kDa <b>Observed MW:</b> 27 kDa	

## Applications

<b>Tested Applications:</b> WB, IHC, IF-P, ELISA	<b>Positive Controls:</b> WB : human kidney tissue, human plasma IHC : human liver tissue, human kidney tissue IF-P : human liver cancer tissue, human liver tissue, mouse spleen tissue
<b>Cited Applications:</b> IHC	
<b>Species Specificity:</b> human, mouse	
<b>Cited Species:</b> human	
<b>Note-IHC: suggested antigen retrieval with TE buffer pH 9.0; (*) Alternatively, antigen retrieval may be performed with citrate buffer pH 6.0</b>	

## Background Information

Serum amyloid P component (SAP), a member of pentraxin family, is a constitutive serum protein that is synthesized by hepatocytes. It is an acute phase protein, structurally related to C-reactive protein. SAP is a calcium-dependent ligand binding protein, which can interact with DNA and histones and may scavenge nuclear material released from damaged circulating cells.

## Notable Publications

Author	Pubmed ID	Journal	Application
Weifeng Wang	33333044	Clin Chim Acta	IHC

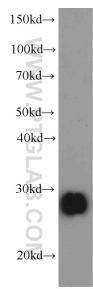
## Storage

**Storage:**  
Store at -20°C. Stable for one year after shipment.  
**Storage Buffer:**  
PBS with 0.02% sodium azide and 50% glycerol pH 7.3.  
Aliquoting is unnecessary for -20°C storage

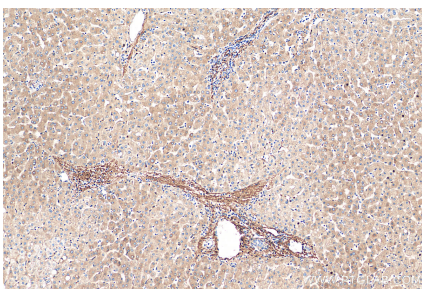
For technical support and original validation data for this product please contact:  
T: 4006900926 E: Proteintech-CN@ptglab.com W: ptgcn.com

This product is exclusively available under Proteintech Group brand and is not available to purchase from any other manufacturer.

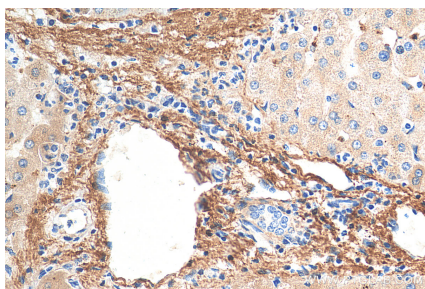
Selected Validation Data



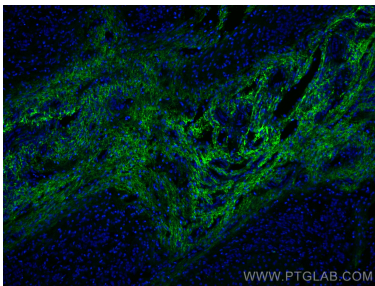
human kidney tissue were subjected to SDS PAGE followed by western blot with 66084-1-Ig (Serum amyloid P component antibody) at dilution of 1:1000 incubated at room temperature for 1.5 hours.



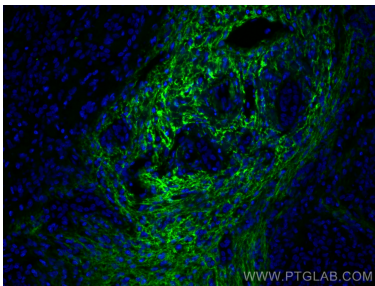
Immunohistochemical analysis of paraffin-embedded human liver tissue slide using 66084-1-Ig (Serum amyloid P component antibody) at dilution of 1:200 (under 10x lens). Heat mediated antigen retrieval with Tris-EDTA buffer (pH 9.0).



Immunohistochemical analysis of paraffin-embedded human liver tissue slide using 66084-1-Ig (Serum amyloid P component antibody) at dilution of 1:200 (under 40x lens). Heat mediated antigen retrieval with Tris-EDTA buffer (pH 9.0).



Immunofluorescent analysis of (4% PFA) fixed human liver cancer tissue using Serum amyloid P component antibody (66084-1-Ig, Clone: 1A1D10 ) at dilution of 1:400 and CoraLite®488-Conjugated AffiniPure Goat Anti-Mouse IgG(H+L).



Immunofluorescent analysis of (4% PFA) fixed human liver cancer tissue using Serum amyloid P component antibody (66084-1-Ig, Clone: 1A1D10 ) at dilution of 1:400 and CoraLite®488-Conjugated AffiniPure Goat Anti-Mouse IgG(H+L).