

TLE3 Monoclonal antibody, PBS Only

Catalog Number: 66083-1-PBS

Basic Information

Catalog Number: 66083-1-PBS	GenBank Accession Number: BC015729	Purification Method: Protein A purification
Size: 1 mg/ml	GeneID (NCBI): 7090	CloneNo.: 1D11A8
Source: Mouse	UNIPROT ID: Q04726	
Isotype: IgG1	Full Name: transducin-like enhancer of split 3 (E(sp1) homolog, Drosophila)	
Immunogen Catalog Number: AG17906	Calculated MW: 772 aa, 83 kDa	
	Observed MW: 90 kDa	

Applications

Tested Applications:
WB, IP, Indirect ELISA, IHC

Species Specificity:
human

Background Information

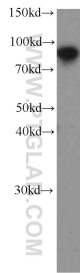
TLE3, also named as KIAA1547 and ESG3, belongs to the WD repeat Groucho/TLE family. It is a transcriptional corepressor that binds to a number of transcription factors. It inhibits the transcriptional activation mediated by CTNNB1 and TCF family members in Wnt signaling. The effects of full-length TLE family members may be modulated by association with dominant-negative AES. TLE3 is a member of the transducin-like enhancer of split (TLE) family of proteins that have been implicated in the tumorigenesis and classification of sarcomas. It is a candidate biomarker of response to taxane therapy. (PMID:19309506)

Storage

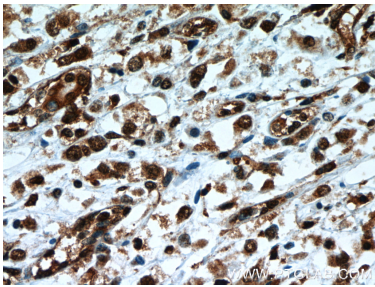
Storage:
Store at -80°C.
The product is shipped with ice packs. Upon receipt, store it immediately at -80°C

Storage Buffer:
PBS Only

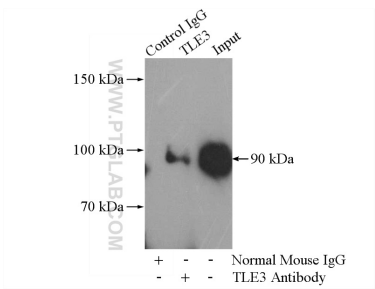
Selected Validation Data



HEK-293 cells were subjected to SDS PAGE followed by western blot with 66083-1-Ig (TLE3 antibody) at dilution of 1:1000 incubated at room temperature for 1.5 hours. This data was developed using the same antibody clone with 66083-1-PBS in a different storage buffer formulation.



Immunohistochemical analysis of paraffin-embedded human breast cancer slide using 66083-1-Ig (TLE3 Antibody) at dilution of 1:50. This data was developed using the same antibody clone with 66083-1-PBS in a different storage buffer formulation.



IP result of anti-TLE3 (IP:66083-1-Ig, 5ug; Detection:66083-1-Ig 1:500) with HEK-293 cells lysate 1480ug. This data was developed using the same antibody clone with 66083-1-PBS in a different storage buffer formulation.