

TLE3 Monoclonal antibody

Catalog Number: 66083-1-Ig

Basic Information

Catalog Number:

66083-1-Ig

Size:

675 µg/ml

Source:

Mouse

Isotype:

IgG1

Immunogen Catalog Number:

AG17906

GenBank Accession Number:

BC015729

GeneID (NCBI):

7090

UNIPROT ID:

Q04726

Full Name:transducin-like enhancer of split 3
(E(sp1) homolog, Drosophila)**Calculated MW:**

772 aa, 83 kDa

Observed MW:

90 kDa

Purification Method:

Protein A purification

CloneNo.:

1D11A8

Recommended Dilutions:

WB 1:500-1:2000

IP 0.5-4.0 µg for 1.0-3.0 mg of total
protein lysate

IHC 1:20-1:200

Applications

Tested Applications:

IHC, IP, WB, ELISA

Species Specificity:

human

**Note-IHC: suggested antigen retrieval with
TE buffer pH 9.0; (*) Alternatively, antigen
retrieval may be performed with citrate
buffer pH 6.0**

Positive Controls:

WB : HEK-293 cells, human brain tissue

IP : HEK-293 cells,

IHC : human breast cancer tissue,

Background Information

TLE3, also named as KIAA1547 and ESG3, belongs to the WD repeat Groucho/TLE family. It is a transcriptional corepressor that binds to a number of transcription factors. It inhibits the transcriptional activation mediated by CTNNB1 and TCF family members in Wnt signaling. The effects of full-length TLE family members may be modulated by association with dominant-negative AES. TLE3 is a member of the transducin-like enhancer of split (TLE) family of proteins that have been implicated in the tumorigenesis and classification of sarcomas. It is a candidate biomarker of response to taxane therapy. (PMID:19309506)

Storage

Storage:

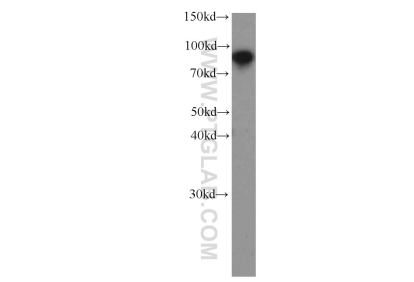
Store at -20°C. Stable for one year after shipment.

Storage Buffer:

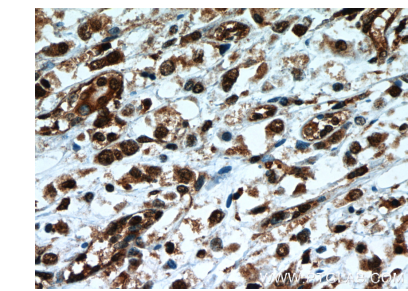
PBS with 0.02% sodium azide and 50% glycerol pH 7.3.

Aliquoting is unnecessary for -20°C storage

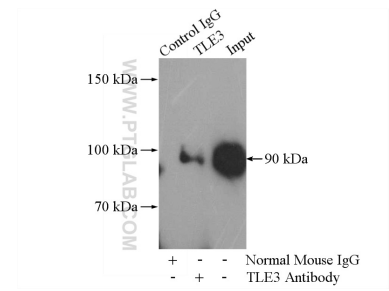
Selected Validation Data



HEK-293 cells were subjected to SDS PAGE followed by western blot with 66083-1-Ig (TLE3 antibody) at dilution of 1:1000 incubated at room temperature for 1.5 hours.



Immunohistochemical analysis of paraffin-embedded human breast cancer slide using 66083-1-Ig (TLE3 Antibody) at dilution of 1:50.



IP result of anti-TLE3 (IP:66083-1-Ig, 5ug; Detection:66083-1-Ig 1:500) with HEK-293 cells lysate 1480ug.