

APOH Monoclonal antibody

Catalog Number: 66074-1-Ig 5 Publications

Basic Information

Catalog Number: 66074-1-Ig	GenBank Accession Number: BC026283	Purification Method: Protein G purification
Concentration: 1000 ug/ml	GeneID (NCBI): 350	CloneNo.: 4D9A4
Source: Mouse	UNIPROT ID: P02749	Recommended Dilutions: WB 1:5000-1:50000
Isotype: IgG1	Full Name: apolipoprotein H (beta-2-glycoprotein I)	IHC 1:100-1:800
Immunogen Catalog Number: AG17915	Calculated MW: 345 aa, 38 kDa	IF-P 1:200-1:800
	Observed MW: 50-53 kDa	IF/ICC 1:400-1:1600

Applications

Tested Applications:
WB, IHC, IF/ICC, IF-P, ELISA

Cited Applications:
WB, Neutralization

Species Specificity:
human, mouse, rat, pig

Cited Species:
human, mouse

Note-IHC: suggested antigen retrieval with TE buffer pH 9.0; (*) Alternatively, antigen retrieval may be performed with citrate buffer pH 6.0

Positive Controls:

WB : human plasma, human testis tissue, pig plasma, human heart tissue, pig heart tissue, rabbit heart tissue, rat heart tissue, mouse heart tissue, rabbit brain tissue, rat brain tissue, mouse brain tissue

IHC : human liver cancer tissue, human colon cancer tissue, human liver tissue

IF-P : human liver cancer tissue,

IF/ICC : HepG2 cells,

Background Information

Apolipoprotein H (ApoH), also known as beta2-glycoprotein I (B2-GPI), is a plasma glycoprotein, primarily synthesized in the liver. It has an important function in blood coagulation and clearance of apoptotic bodies from the circulation. ApoH is also an important actor of host innate immune response through its capacity to bind with high affinity to a large panel of pathogens or their proteins.

Notable Publications

Author	Pubmed ID	Journal	Application
Liang Tang	25081279	J Thromb Haemost	WB
Xiao-Ping Zhang	30074200	Curr Med Sci	WB
Xiang He	39353906	Cell Death Dis	WB

Storage

Storage:
Store at -20°C. Stable for one year after shipment.

Storage Buffer:
PBS with 0.02% sodium azide and 50% glycerol pH 7.3.

Aliquoting is unnecessary for -20°C storage

For technical support and original validation data for this product please contact:

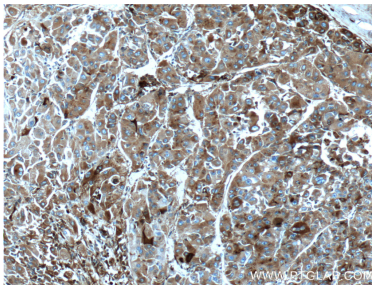
T: 4006900926

E: Proteintech-CN@ptglab.com

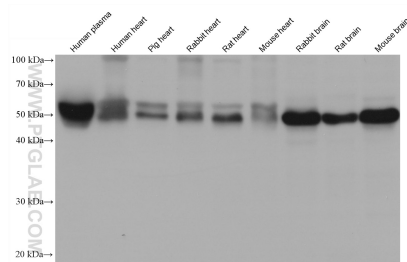
W: ptgcn.com

This product is exclusively available under Proteintech Group brand and is not available to purchase from any other manufacturer.

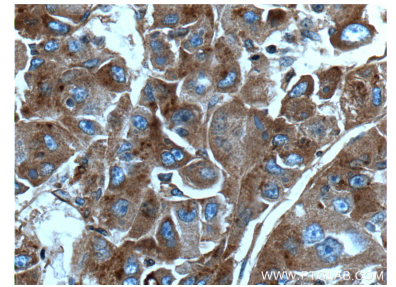
Selected Validation Data



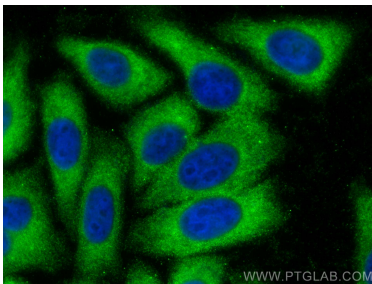
Immunohistochemical analysis of paraffin-embedded human liver cancer tissue slide using 66074-1-Ig (Apolipoprotein H antibody) at dilution of 1:400 (under 10x lens. Heat mediated antigen retrieval with Tris-EDTA buffer (pH 9.0).



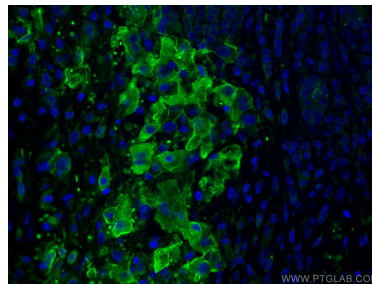
Various lysates were subjected to SDS PAGE followed by western blot with 66074-1-Ig (Apolipoprotein H antibody) at dilution of 1:10000 incubated at room temperature for 1.5 hours.



Immunohistochemical analysis of paraffin-embedded human liver cancer tissue slide using 66074-1-Ig (Apolipoprotein H antibody) at dilution of 1:400 (under 40x lens. Heat mediated antigen retrieval with Tris-EDTA buffer (pH 9.0).



Immunofluorescent analysis of (-20°C Ethanol) fixed HepG2 cells using Apolipoprotein H antibody (66074-1-Ig, Clone: 4D9A4) at dilution of 1:800 and CoraLite®488-Conjugated AffiniPure Goat Anti-Mouse IgG(H+L).



Immunofluorescent analysis of (4% PFA) fixed human liver cancer tissue using Apolipoprotein H antibody (66074-1-Ig, Clone: 4D9A4) at dilution of 1:400 and CoraLite®488-Conjugated AffiniPure Goat Anti-Mouse IgG(H+L).