

CPT1C Monoclonal antibody

Catalog Number: 66072-1-Ig

Featured Product

8 Publications

Basic Information

Catalog Number:

66072-1-Ig

Size:

1700 µg/ml

Source:

Mouse

Isotype:

IgG2b

Immunogen Catalog Number:

AG17963

GenBank Accession Number:

BC029104

GeneID (NCBI):

126129

UNIPROT ID:

Q8TCG5

Full Name:

carnitine palmitoyltransferase 1C

Calculated MW:

792 aa, 90 kDa

Observed MW:

82 kDa

Purification Method:

Protein A purification

CloneNo.:

5D11B5

Recommended Dilutions:

WB 1:500-1:1000

IHC 1:20-1:200

Applications

Tested Applications:

IHC, WB, ELISA

Cited Applications:

WB, IP, IF, IHC

Species Specificity:

human, pig

Cited Species:

human, rat, mouse, pig

Note-IHC: suggested antigen retrieval with TE buffer pH 9.0; (*) Alternatively, antigen retrieval may be performed with citrate buffer pH 6.0

Positive Controls:

WB : Human brain, human brain tissue

IHC : human testis tissue,

Background Information

CPT1C, also named as CATL1, CPTI-B and B-CPTI, belongs to the carnitine/choline acetyltransferase family. Carnitine palmitoyltransferase (CPT) deficiencies are common disorders of mitochondrial fatty acid oxidation. The CPT system is made up of two separate proteins located in the outer (CPT1) and inner (CPT2) mitochondrial membranes. CPT1C is an active forms of related brain-type carnitine palmitoyltransferase I. CPT1C may be a regulated target of malonyl-CoA that relays the "malonyl-CoA signal" in hypothalamic neurons that express the orexigenic and anorexigenic neuropeptides that regulate food intake and peripheral energy expenditure. (PMID: 17018521) This antibody can bind the close sequences genes.

Notable Publications

Author	Pubmed ID	Journal	Application
Zhao Yang	36120828	J Biochem Mol Toxicol	WB
Lulin Tan	35695092	Epigenetics	WB
Ting Zhang	35057851	Cancer Metab	WB,IF

Storage

Storage:

Store at -20°C. Stable for one year after shipment.

Storage Buffer:

PBS with 0.02% sodium azide and 50% glycerol pH 7.3.

Aliquoting is unnecessary for -20°C storage

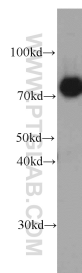
For technical support and original validation data for this product please contact:

T: 4006900926

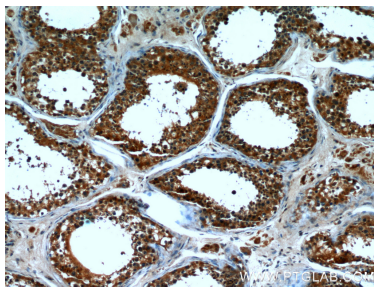
E: Proteintech-CN@ptglab.comW: ptgcn.com

This product is exclusively available under Proteintech Group brand and is not available to purchase from any other manufacturer.

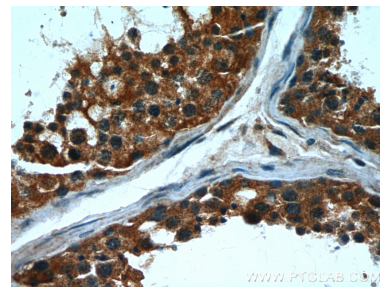
Selected Validation Data



human brain tissue were subjected to SDS PAGE followed by western blot with 66072-1-Ig (CPT1C antibody) at dilution of 1:500 incubated at room temperature for 1.5 hours.



Immunohistochemical analysis of paraffin-embedded human testis using 66072-1-Ig(CPT1C antibody) at dilution of 1:50 (under 10x lens).



Immunohistochemical analysis of paraffin-embedded human testis using 66072-1-Ig(CPT1C antibody) at dilution of 1:50 (under 40x lens).