

For Research Use Only

RAB27A Monoclonal antibody

Catalog Number: 66058-1-Ig

Featured Product

3 Publications



Basic Information

Catalog Number:

66058-1-Ig

Source:

Mouse

Isotype:

IgG1

Immunogen Catalog Number:

AG12382

GenBank Accession Number:

BC107680

GeneID (NCBI):

5873

UNIPROT ID:

P51159

Full Name:

RAB27A, member RAS oncogene family

Calculated MW:

221 aa, 25 kDa

Observed MW:

27 kDa

Purification Method:

Protein G purification

CloneNo.:

1C4B8

Recommended Dilutions:

WB: 1:5000-1:50000

IHC: 1:5000-1:20000

Applications

Tested Applications:

WB, IHC, ELISA

Cited Applications:

WB, IF

Species Specificity:

human, mouse

Cited Species:

human, mouse

Note-IHC: suggested antigen retrieval with TE buffer pH 9.0; (*) Alternatively, antigen retrieval may be performed with citrate buffer pH 6.0

Positive Controls:

WB : HeLa cells, K562, K-562 cells, Jurkat cells, HEK-293 cells, HL-60 cells, HepG2 cells

IHC : human lymphoma tissue, human colon cancer tissue, human skeletal muscle tissue

Background Information

Rab27A is a member of a large family of Ras-related small GTPases. The protein is membrane-bound and may be involved in protein transport and small GTPase mediated signal transduction. Recent studies suggest that Rab27A is associated with melanosomes in pigmented cells and regulates melanosome transport via its interaction with actin-based cellular motors such as myosin Va and myosin VIIa. RAB27A is also required for regulated secretion in cytotoxic T lymphocytes. Rab27A is implicated in several diseases, including Griscelli syndrome, choroideremia, and the Hermansky-Pudlak syndrome mouse model, gunmetal.

Notable Publications

Author	Pubmed ID	Journal	Application
Xiaohui Zhang	40541182	Cell Metab	WB,IF
Ziming Chen	40419796	Nat Cell Biol	WB
Lata Adnani	40408475	Sci Adv	WB,IF

Storage

Storage:

Store at -20°C. Stable for one year after shipment.

Storage Buffer:

PBS with 0.02% sodium azide and 50% glycerol, pH7.3

Aliquoting is unnecessary for -20°C storage

For technical support and original validation data for this product please contact:

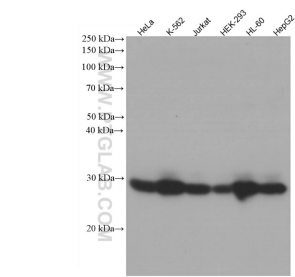
T: 4006900926

E: Proteintech-CN@ptglab.com

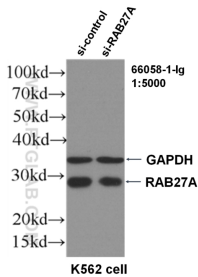
W: ptgcn.com

This product is exclusively available under Proteintech Group brand and is not available to purchase from any other manufacturer.

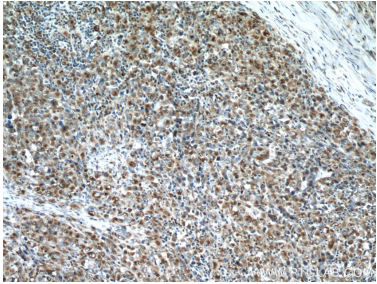
Selected Validation Data



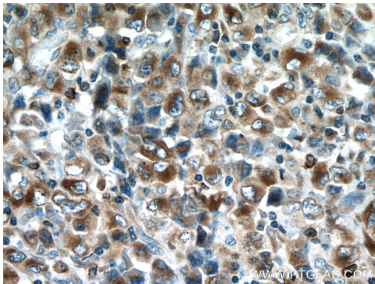
Various lysates were subjected to SDS PAGE followed by western blot with 66058-1-Ig (RAB27A antibody) at dilution of 1:20000 incubated at room temperature for 1.5 hours.



WB result of RAB27A antibody (66058-1-Ig, 1:5000) with si-Control and si-RAB27A transfected K562 cells.



Immunohistochemical analysis of paraffin-embedded human lymphoma tissue slide using 66058-1-Ig (RAB27A antibody) at dilution of 1:10000 (under 10x lens. Heat mediated antigen retrieval with Tris-EDTA buffer (pH 9.0).



Immunohistochemical analysis of paraffin-embedded human lymphoma tissue slide using 66058-1-Ig (RAB27A antibody) at dilution of 1:10000 (under 40x lens. Heat mediated antigen retrieval with Tris-EDTA buffer (pH 9.0).