

For Research Use Only

Albumin Monoclonal antibody, PBS Only (Capture)

Catalog Number: 66051-2-PBS



Basic Information

Catalog Number:

66051-2-PBS

Concentration:

1000 μ g/ml

Source:

Mouse

Isotype:

IgG1

Immunogen Catalog Number:

AG9885

GenBank Accession Number:

BC034023

GeneID (NCBI):

213

UNIPROT ID:

P02768

Full Name:

albumin

Calculated MW:

609 aa, 69 kDa

Purification Method:

Protein G purification

CloneNo.:

5E6B5

Applications

Tested Applications:

Sandwich ELISA, Indirect ELISA, Sample test

Species Specificity:

human

Background Information

Storage

Storage:

Store at -80°C.

The product is shipped with ice packs. Upon receipt, store it immediately at -80°C

Storage Buffer:

PBS only, pH7.3

For technical support and original validation data for this product please contact:

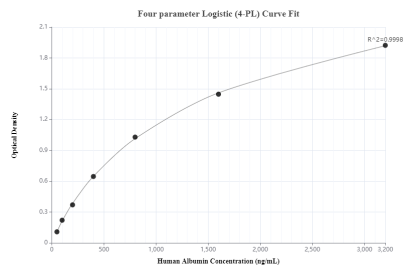
T: 4006900926

E: Proteintech-CN@ptglab.com

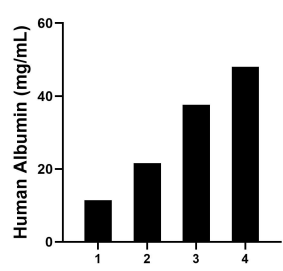
W: ptgcn.com

This product is exclusively available under Proteintech Group brand and is not available to purchase from any other manufacturer.

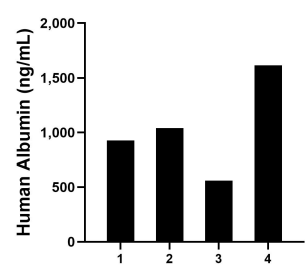
Selected Validation Data



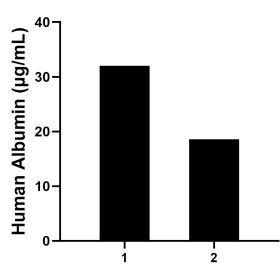
Sandwich ELISA standard curve of MP50031-1, Albumin Monoclonal Matched Antibody Pair, PBS Only. Capture antibody: 66051-2-PBS. Detection antibody: 66051-1-PBS. Standard: Ag9885. Range: 50-3200 ng/mL



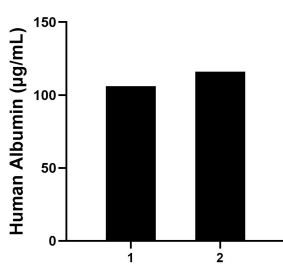
Serum of four individual healthy human donors was measured. The Albumin concentration of detected samples was determined to be 29.65 mg/mL with a range of 11.40-48.00 mg/mL



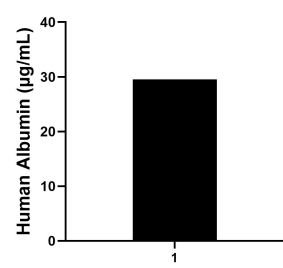
Urine of four individual healthy human donors was measured. The Albumin concentration of detected samples was determined to be 1,036.00 ng/mL with a range of 560.00-1,616.00 ng/mL



Saliva of two individual healthy human donors was measured. The Albumin concentrations of detected samples were determined to be 32.00 µ g/mL and 18.60 µ g/mL, respectively.



Human milk of two individual healthy human donors was measured. The Albumin concentrations of detected samples were determined to be 106.00 µ g/mL and 116.00 µ g/mL, respectively.



Human cerebrospinal fluid (CSF) of one individual human donors was measured. The Albumin concentration of detected samples was determined to be 29.50 µ g/mL