

For Research Use Only

# Albumin Monoclonal antibody

Catalog Number: 66051-1-Ig **52 Publications**



## Basic Information

<b>Catalog Number:</b> 66051-1-Ig	<b>GenBank Accession Number:</b> BC034023	<b>Purification Method:</b> Protein G purification
<b>Source:</b> Mouse	<b>GeneID (NCBI):</b> 213	<b>CloneNo.:</b> 4A1C11
<b>Isotype:</b> IgG1	<b>UNIPROT ID:</b> P02768	<b>Recommended Dilutions:</b> WB: 1:5000-1:50000 IHC: 1:50-1:500 IF-P: 1:200-1:800 IF/ICC: 1:200-1:800
<b>Immunogen Catalog Number:</b> AG9885	<b>Full Name:</b> albumin	
	<b>Calculated MW:</b> 609 aa, 69 kDa	
	<b>Observed MW:</b> 66 kDa	

## Applications

<b>Tested Applications:</b> WB, IHC, IF/ICC, IF-P, ELISA	<b>Positive Controls:</b> WB : human plasma tissue, human liver tissue
<b>Cited Applications:</b> WB, IHC, IF, IP	<b>IHC :</b> human liver tissue,
<b>Species Specificity:</b> human, rat, pig	<b>IF-P :</b> mouse liver tissue,
<b>Cited Species:</b> human, mouse, rat, pig, rabbit	<b>IF/ICC :</b> HepG2 cells,
<b>Note-IHC: suggested antigen retrieval with TE buffer pH 9.0; (*) Alternatively, antigen retrieval may be performed with citrate buffer pH 6.0</b>	

## Background Information

Albumin is the most abundant protein in blood plasma. Alterations of level of serum albumin are linked to variety of diseases. Albumin is expressed exclusively by well-differentiated hepatocytes, thus anti-albumin has been used to mark hepatocytes. (21388516, 23832071) In addition, glycated serum albumin is also a potential diabetes biomarker.

## Notable Publications

Author	Pubmed ID	Journal	Application
Shifeng Tong	36181861	Cryobiology	IF
Hai Xie	33104828	Diabetologia	IF
Juan Chen	30473025	Life Sci	WB

## Storage

**Storage:**  
Store at -20°C. Stable for one year after shipment.  
**Storage Buffer:**  
PBS with 0.02% sodium azide and 50% glycerol, pH7.3  
Aliquoting is unnecessary for -20°C storage

For technical support and original validation data for this product please contact:

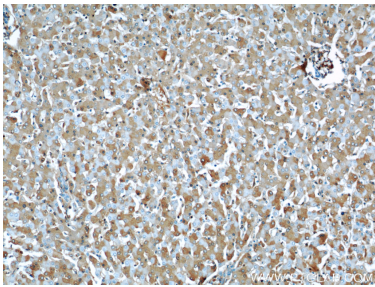
T: 4006900926

E: [Proteintech-CN@ptglab.com](mailto:Proteintech-CN@ptglab.com)

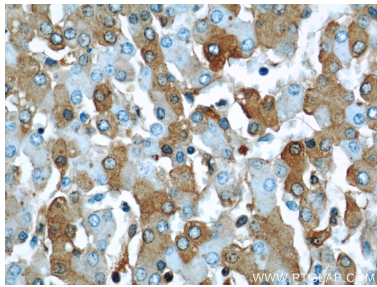
W: [ptgcn.com](http://ptgcn.com)

This product is exclusively available under Proteintech Group brand and is not available to purchase from any other manufacturer.

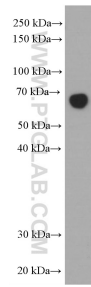
Selected Validation Data



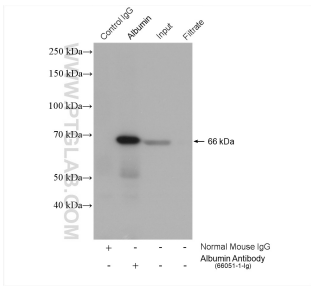
Immunohistochemical analysis of paraffin-embedded human liver using 66051-1-Ig(Alb antibody) at dilution of 1:50 (under 10x lens).



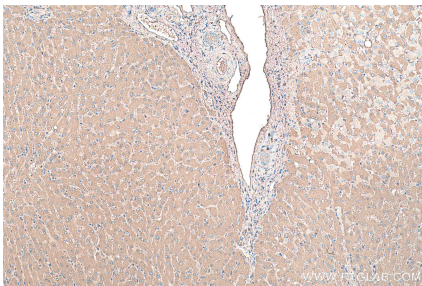
Immunohistochemical analysis of paraffin-embedded human liver using 66051-1-Ig(Alb antibody) at dilution of 1:50 (under 40x lens).



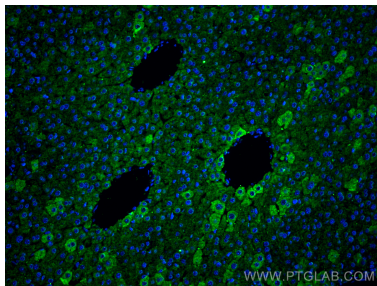
human plasma (diluted 5000 fold) was subjected to SDS PAGE followed by western blot with 66051-1-Ig (Albumin Antibody) at dilution of 1:10000 incubated at room temperature for 1.5 hours.



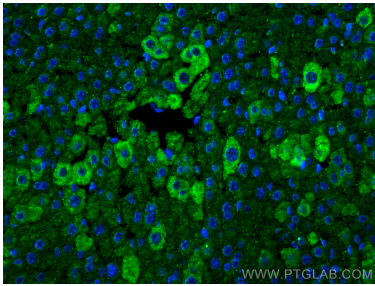
IP result of anti-Albumin (IP:66051-1-Ig, 4ug; Detection:66051-1-Ig 1:1000) with HepG2 cells lysate 1720 ug.



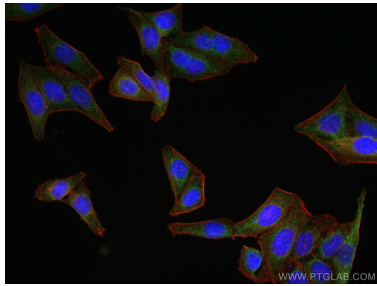
Immunohistochemical analysis of paraffin-embedded human liver tissue slide using 66051-1-Ig (Albumin antibody) at dilution of 1:64000 (under 10x lens). Heat mediated antigen retrieval with Tris-EDTA buffer (pH 9.0).



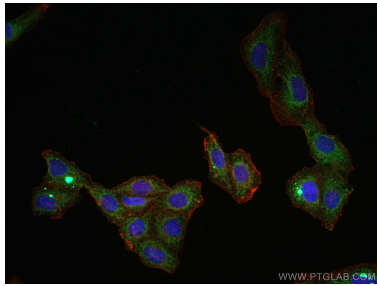
Immunofluorescent analysis of (4% PFA) fixed paraffin-embedded mouse liver tissue using Albumin antibody (66051-1-Ig, Clone: 4A1C11 ) at dilution of 1:400 and Coralite@488-Conjugated Goat Anti-Mouse IgG(H+L) (SA00013-1). Heat mediated antigen retrieval with Tris-EDTA buffer (pH 9.0).



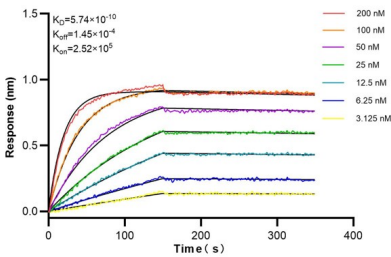
Immunofluorescent analysis of (4% PFA) fixed paraffin-embedded mouse liver tissue using Albumin antibody (66051-1-Ig, Clone: 4A1C11 ) at dilution of 1:400 and Coralite@488-Conjugated Goat Anti-Mouse IgG(H+L) (SA00013-1). Heat mediated antigen retrieval with Tris-EDTA buffer (pH 9.0).



Immunofluorescent analysis of (4% PFA) fixed HepG2 cells using Albumin antibody (66051-1-Ig, Clone: 4A1C11 ) at dilution of 1:400 and Coralite@488-Conjugated AffiniPure Goat Anti-Mouse IgG(H+L), CL594-Phalloidin (red).



Immunofluorescent analysis of (4% PFA) fixed HepG2 cells using Albumin antibody (66051-1-Ig, Clone: 4A1C11 ) at dilution of 1:400 and Coralite@488-Conjugated AffiniPure Goat Anti-Mouse IgG(H+L), CL594-Phalloidin (red).



Biolayer interferometry (BLI) kinetic assays of 66051-1-Ig against Human Albumin were performed. The affinity constant is 0.574 nM