

For Research Use Only

# NDUFA4L2 Monoclonal antibody, PBS Only (Capture)

Catalog Number: 66050-1-PBS



## Basic Information

Catalog Number:	66050-1-PBS	GenBank Accession Number:	BC011910	Purification Method:	Protein A purification
Size:	1mg/ml	GeneID (NCBI):	56901	CloneNo.:	1G1H10
Source:	Mouse	UNIPROT ID:	Q9NRX3		
Isotype:	IgG2a	Full Name:	NADH dehydrogenase (ubiquinone) 1 alpha subcomplex, 4-like 2		
Immunogen Catalog Number:	AG9233	Calculated MW:	87 aa, 10 kDa		
		Observed MW:	10 kDa		

## Applications

**Tested Applications:**  
WB, IHC, IF/ICC, Cytometric bead array, Indirect ELISA

**Species Specificity:**  
human

## Background Information

NDUFA4L2, also named as NUOMS, is a HIF-1 $\alpha$  target gene that localizes to the mitochondria. It downregulates oxygen consumption and Complex I activity in hypoxia. NDUFA4L2 is involved in hypoxic adaptation by decreasing mitochondrial ROS production.

## Storage

**Storage:**  
Store at -80°C.  
**The product is shipped with ice packs. Upon receipt, store it immediately at -80°C**

**Storage Buffer:**  
PBS Only

For technical support and original validation data for this product please contact:

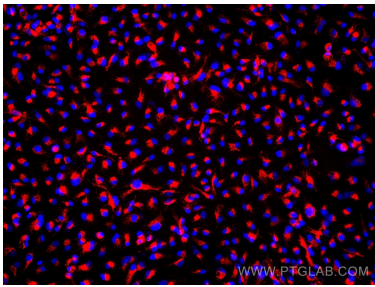
T: 4006900926

E: [Proteintech-CN@ptglab.com](mailto:Proteintech-CN@ptglab.com)

W: [ptgcn.com](http://ptgcn.com)

**This product is exclusively available under Proteintech Group brand and is not available to purchase from any other manufacturer.**

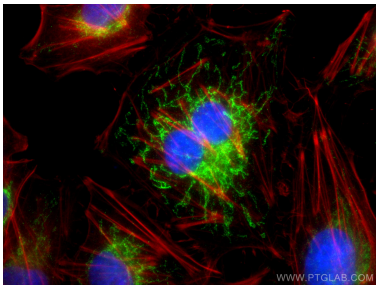
Selected Validation Data



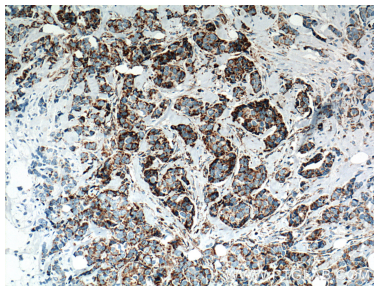
Immunofluorescent analysis of (4% PFA) fixed OS-RC-2 cells using NDUFA4L2 antibody (66050-1-Ig, Clone: 1G1H10 ) at dilution of 1:1200 and Multi-rAb CoraLite® Plus 594-Goat Anti-Mouse Recombinant Secondary Antibody (H+L) (Cat.NO. RGAM004 ). This data was developed using the same antibody clone with 66050-1-PBS in a different storage buffer formulation.



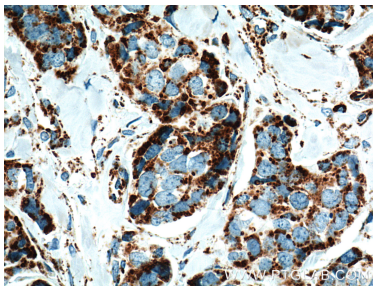
HeLa cells were subjected to SDS PAGE followed by western blot with 66050-1-Ig (NDUFA4L2 antibody) at dilution of 1:1000 incubated at room temperature for 1.5 hours. This data was developed using the same antibody clone with 66050-1-PBS in a different storage buffer formulation.



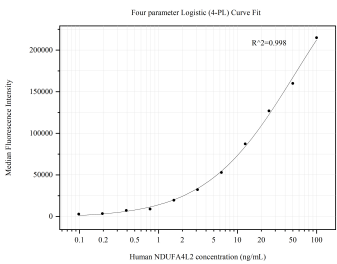
Immunofluorescent analysis of (4% PFA) fixed HUVEC cells using NDUFA4L2 antibody (66050-1-Ig, Clone: 1G1H10 ) at dilution of 1:400 and CoraLite®488-Conjugated AffiniPure Goat Anti-Mouse IgG(H+L). This data was developed using the same antibody clone with 66050-1-PBS in a different storage buffer formulation.



Immunohistochemical analysis of paraffin-embedded human breast cancer tissue slide using 66050-1-Ig (NDUFA4L2 Antibody) at dilution of 1:500 (under 10x lens). Heat mediated antigen retrieval with Tris-EDTA buffer (pH 9.0). This data was developed using the same antibody clone with 66050-1-PBS in a different storage buffer formulation.



Immunohistochemical analysis of paraffin-embedded human breast cancer tissue slide using 66050-1-Ig (NDUFA4L2 Antibody) at dilution of 1:500 (under 40x lens). Heat mediated antigen retrieval with Tris-EDTA buffer (pH 9.0). This data was developed using the same antibody clone with 66050-1-PBS in a different storage buffer formulation.



Cytometric bead array standard curve of MP50529-1, NDUFA4L2 Monoclonal Matched Antibody Pair, PBS Only. Capture antibody: 66050-1-PBS. Detection antibody: 66050-2-PBS. Standard:Ag9233. Range: 0.098-100 ng/mL.