

For Research Use Only

NDUFA4L2 Monoclonal antibody

Catalog Number: 66050-1-Ig **2 Publications**



Basic Information

Catalog Number: 66050-1-Ig	GenBank Accession Number: BC011910	Purification Method: Protein A purification
Size: 1200 ug/ml	GeneID (NCBI): 56901	CloneNo.: 1G1H10
Source: Mouse	UNIPROT ID: Q9NRX3	Recommended Dilutions: WB 1:500-1:2000 IHC 1:200-1:1000 IF/ICC 1:200-1:800
Isotype: IgG2a	Full Name: NADH dehydrogenase (ubiquinone) 1 alpha subcomplex, 4-like 2	
Immunogen Catalog Number: AG9233	Calculated MW: 87 aa, 10 kDa	
	Observed MW: 10 kDa	

Applications

Tested Applications: WB, IHC, IF/ICC, ELISA	Positive Controls:
Cited Applications: WB, IHC	WB : HeLa cells,
Species Specificity: human	IHC : human breast cancer tissue, human renal cell carcinoma tissue
Cited Species: human	IF/ICC : HUVEC cells, OS-RC-2 cells, MCF-7 cells, HeLa cells
Note-IHC: suggested antigen retrieval with TE buffer pH 9.0; (*) Alternatively, antigen retrieval may be performed with citrate buffer pH 6.0	

Background Information

NDUFA4L2, also named as NUOMS, is a HIF-1 α target gene that localizes to the mitochondria. It downregulates oxygen consumption and Complex I activity in hypoxia. NDUFA4L2 is involved in hypoxic adaptation by decreasing mitochondrial ROS production.

Notable Publications

Author	Pubmed ID	Journal	Application
Sen Qin	38407266	Elife	IHC
Jaclyn M Kubala	36722045	Cancer Biol Ther	WB

Storage

Storage:
Store at -20°C. Stable for one year after shipment.
Storage Buffer:
PBS with 0.02% sodium azide and 50% glycerol pH 7.3.
Aliquoting is unnecessary for -20°C storage

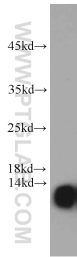
For technical support and original validation data for this product please contact:
T: 4006900926 E: Proteintech-CN@ptglab.com W: ptgcn.com

This product is exclusively available under Proteintech Group brand and is not available to purchase from any other manufacturer.

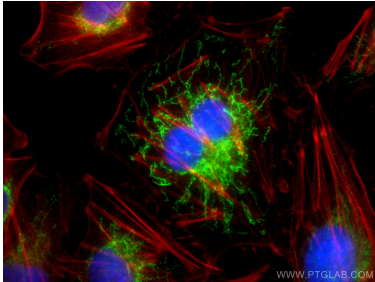
Selected Validation Data



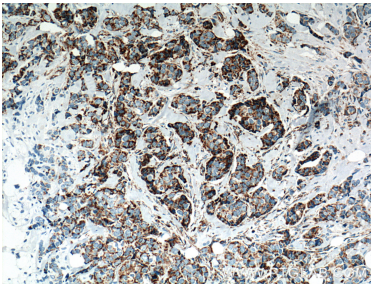
Immunofluorescent analysis of (4% PFA) fixed OS-RC-2 cells using NDUFA4L2 antibody (66050-1-Ig, Clone: 1G1H10) at dilution of 1:1200 and Multi-rAb CoraLite® Plus 594-Goat Anti-Mouse Recombinant Secondary Antibody (H+L) (Cat.NO. RGAM004).



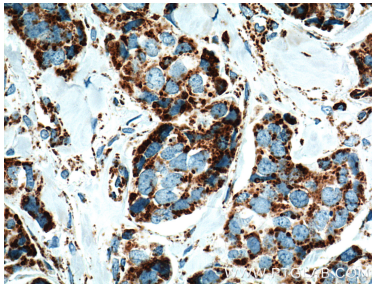
HeLa cells were subjected to SDS PAGE followed by western blot with 66050-1-Ig (NDUFA4L2 antibody) at dilution of 1:1000 incubated at room temperature for 1.5 hours.



Immunofluorescent analysis of (4% PFA) fixed HUVEC cells using NDUFA4L2 antibody (66050-1-Ig, Clone: 1G1H10) at dilution of 1:400 and CoraLite®488-Conjugated AffiniPure Goat Anti-Mouse IgG(H+L).



Immunohistochemical analysis of paraffin-embedded human breast cancer tissue slide using 66050-1-Ig (NDUFA4L2 Antibody) at dilution of 1:500 (under 10x lens). Heat mediated antigen retrieval with Tris-EDTA buffer (pH 9.0).



Immunohistochemical analysis of paraffin-embedded human breast cancer tissue slide using 66050-1-Ig (NDUFA4L2 Antibody) at dilution of 1:500 (under 40x lens). Heat mediated antigen retrieval with Tris-EDTA buffer (pH 9.0).