

For Research Use Only

IA-2/PTPRN Monoclonal antibody, PBS Only

Catalog Number: 66045-1-PBS



Basic Information

Catalog Number:

66045-1-PBS

Concentration:

1mg/ml

Source:

Mouse

Isotype:

IgG3

Immunogen Catalog Number:

AG17909

GenBank Accession Number:

BC007713

GeneID (NCBI):

5798

UNIPROT ID:

Q16849

Full Name:

protein tyrosine phosphatase, receptor type, N

Calculated MW:

105 kDa

Observed MW:

60-65 kDa, 106-115 kDa

Purification Method:

Protein A purification

CloneNo.:

1D3F5

Applications

Tested Applications:

WB, IHC, IF/ICC, ELISA

Species Specificity:

human, pig, rabbit

Background Information

IA-2/PTPRN is a member of the protein tyrosine phosphatase (PTP) family, which contains a transmembrane region, an intracellular PTP-like domain and an extracellular N-terminus. Experiments found that IA-2/PTPRN localizes to secretory granules and is exclusively expressed in neuroendocrine cells (including pancreatic islets cell). IA-2/PTPRN was found to be a major autoantigen in insulin-dependent diabetes mellitus and the detection of autoantibodies against IA-2/PTPRN is commonly used as a diabetes diagnosis marker.

Storage

Storage:

Store at -80°C.

The product is shipped with ice packs. Upon receipt, store it immediately at -80°C

Storage Buffer:

PBS Only

For technical support and original validation data for this product please contact:

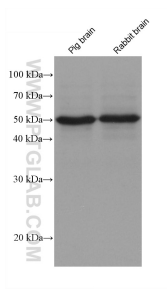
T: 4006900926

E: Proteintech-CN@ptglab.com

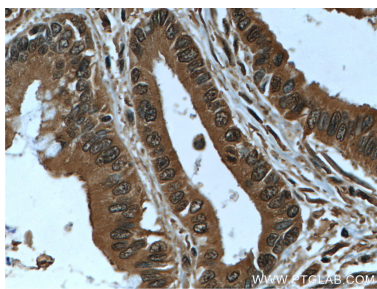
W: ptgcn.com

This product is exclusively available under Proteintech Group brand and is not available to purchase from any other manufacturer.

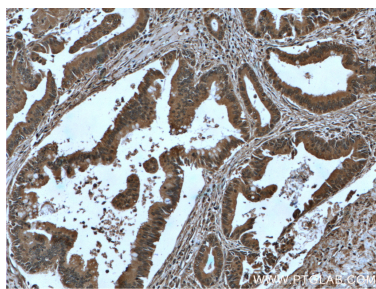
Selected Validation Data



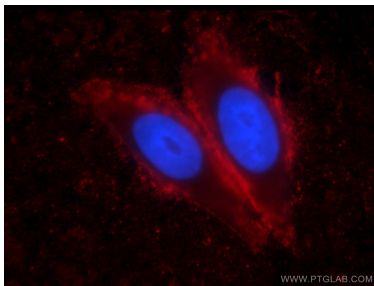
Various lysates were subjected to SDS PAGE followed by western blot with 66045-1-Ig (IA-2/PTPRN antibody) at dilution of 1:5000 incubated at room temperature for 1.5 hours. This data was developed using the same antibody clone with 66045-1-PBS in a different storage buffer formulation.



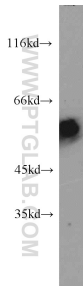
Immunohistochemical analysis of paraffin-embedded human pancreas cancer tissue slide using 66045-1-Ig (IA-2/PTPRN antibody at dilution of 1:400 (under 40x lens). Heat mediated antigen retrieval with Tris-EDTA buffer (pH 9.0). This data was developed using the same antibody clone with 66045-1-PBS in a different storage buffer formulation.



Immunohistochemical analysis of paraffin-embedded human pancreas cancer tissue slide using 66045-1-Ig (IA-2/PTPRN antibody at dilution of 1:400 (under 10x lens). Heat mediated antigen retrieval with Tris-EDTA buffer (pH 9.0). This data was developed using the same antibody clone with 66045-1-PBS in a different storage buffer formulation.



Immunofluorescent analysis of HepG2 cells using 66045-1-Ig (IA-2/PTPRN antibody) at dilution of 1:25 and Rhodamine-Goat anti-Mouse IgG. This data was developed using the same antibody clone with 66045-1-PBS in a different storage buffer formulation.



human brain tissue were subjected to SDS PAGE followed by western blot with 66045-1-Ig (IA-2/PTPRN antibody) at dilution of 1:500 incubated at room temperature for 1.5 hours. This data was developed using the same antibody clone with 66045-1-PBS in a different storage buffer formulation.