

For Research Use Only

LPCAT1 Monoclonal antibody, PBS Only (Capture)

Catalog Number: 66044-1-PBS

Featured Product



Basic Information

Catalog Number:

66044-1-PBS

Size:

1mg/ml

Source:

Mouse

Isotype:

IgG2b

Immunogen Catalog Number:

AG9060

GenBank Accession Number:

BC020166

GeneID (NCBI):

79888

UNIPROT ID:

Q8NF37

Full Name:

lysophosphatidylcholine
acyltransferase 1

Calculated MW:

534 aa, 59 kDa

Observed MW:

55 kDa

Purification Method:

Protein A purification

CloneNo.:

8B6E9

Applications

Tested Applications:

WB, IHC, IF/ICC, IF-P, Cytometric bead array, Indirect
ELISA

Species Specificity:

human, mouse, rat

Background Information

LPCAT1, also named as AYTL2, PFAAP3 and LysoPAFAT, belongs to the 1-acyl-sn-glycerol-3-phosphate acyltransferase family. It is a key enzyme for remodeling phospholipids, including phosphatidylcholine. The expression level of LPCAT1 is able to differentiate prostate cancer from noncancerous prostatic changes, and correlates to the tumor grade of prostate cancer. LPCAT1 possesses both acyltransferase and acetyltransferase activities. It mediates the conversion of 1-acyl-sn-glycero-3-phosphocholine (LPC) into phosphatidylcholine (PC).

Storage

Storage:

Store at -80°C.

The product is shipped with ice packs. Upon receipt, store it immediately at -80°C

Storage Buffer:

PBS Only

For technical support and original validation data for this product please contact:

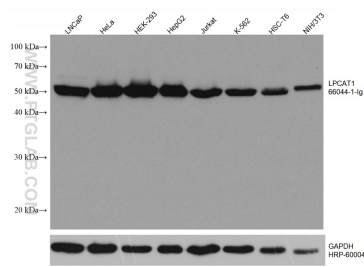
T: 4006900926

E: Proteintech-CN@ptglab.com

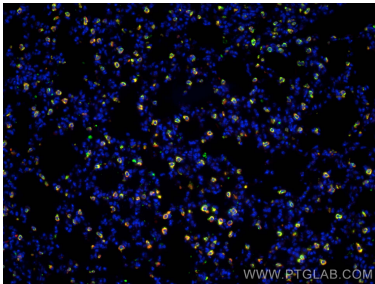
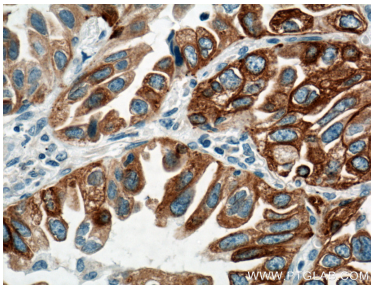
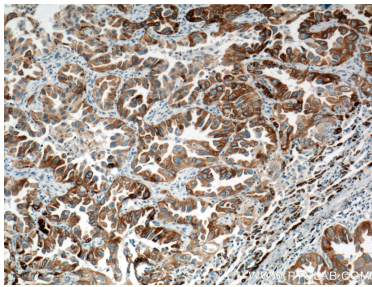
W: ptgcn.com

This product is exclusively available under Proteintech Group brand and is not available to purchase from any other manufacturer.

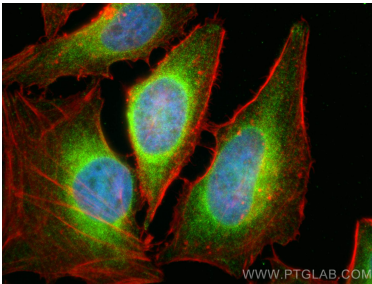
Selected Validation Data



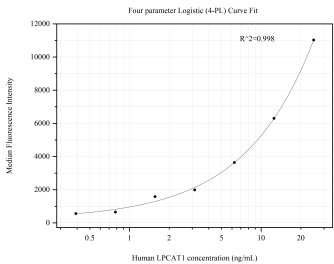
Various lysates were subjected to SDS PAGE followed by western blot with 66044-1-Ig (LPCAT1 antibody) at dilution of 1:10000 incubated at room temperature for 1.5 hours. The membrane was stripped and reblotted with HRP-conjugated GAPDH Monoclonal antibody (HRP-60004) as loading control. This data was developed using the same antibody clone with 66044-1-PBS in a different storage buffer formulation.



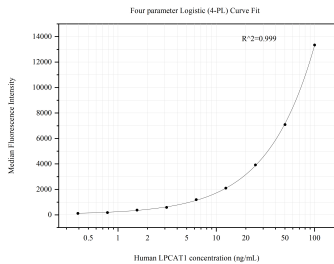
Immunofluorescent analysis of (4% PFA) fixed mouse lung tissue using LPCAT1 antibody (66044-1-Ig, Clone: 8B6E9) at dilution of 1:400 and CoraLite@594-Conjugated AffiniPure Goat Anti-Mouse IgG(H+L), SFTPC antibody (10774-1-AP, green). This data was developed using the same antibody clone with 66044-1-PBS in a different storage buffer formulation.



Immunofluorescent analysis of (4% PFA) fixed HeLa cells using LPCAT1 antibody (66044-1-Ig, Clone: 8B6E9) at dilution of 1:800 and CoraLite@488-Conjugated AffiniPure Goat Anti-Mouse IgG(H+L), CL594-Phalloidin (red). This data was developed using the same antibody clone with 66044-1-PBS in a different storage buffer formulation.



Cytometric bead array standard curve of MP50776-2, LPCAT1 Monoclonal Matched Antibody Pair, PBS Only. Capture antibody: 66044-1-PBS. Detection antibody: 66044-3-PBS. Standard:Ag9060. Range: 0.391-25 ng/mL.



Cytometric bead array standard curve of MP50776-3, LPCAT1 Monoclonal Matched Antibody Pair, PBS Only. Capture antibody: 66044-1-PBS. Detection antibody: 66044-2-PBS. Standard:Ag9060. Range: 0.391-100 ng/mL.