

For Research Use Only

# LONP1 Monoclonal antibody, PBS Only (Capture)

Catalog Number: 66043-1-PBS

Featured Product



## Basic Information

Catalog Number:

66043-1-PBS

Size:

1mg/ml

Source:

Mouse

Isotype:

IgG1

Immunogen Catalog Number:

AG7306

GenBank Accession Number:

BC000235

GeneID (NCBI):

9361

UNIPROT ID:

P36776

Full Name:

Lon peptidase 1, mitochondrial

Calculated MW:

106 kDa

Observed MW:

100 kDa

Purification Method:

Protein G purification

CloneNo.:

1C6C12

## Applications

Tested Applications:

WB, IHC, IF/ICC, Cytometric bead array, Indirect ELISA

Species Specificity:

human, mouse, rat

## Background Information

LONP1 (Lon protease homolog, mitochondrial) is also named as LONP, LONHS, HLON, LON, PRSS15, PIM1, MGC1498 and belongs to the peptidase S16 family. It seems to play a major role in the elimination of oxidatively modified proteins in the mitochondrial matrix (PMID:18021745). LONP1, also a nuclearly encoded and mitochondrially located stress-responsive protease, is involved in heme-mediated ALAS-1 turnover (PMID:21659532). It recognizes specific surface determinants or folds, initiates proteolysis at solvent-accessible sites, and generates unfolded polypeptides that are then processively degraded (PMID:15870080).

## Storage

Storage:

Store at -80°C.

The product is shipped with ice packs. Upon receipt, store it immediately at -80°C

Storage Buffer:

PBS Only

For technical support and original validation data for this product please contact:

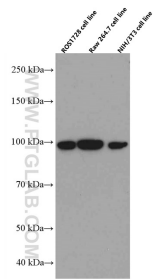
T: 4006900926

E: [Proteintech-CN@ptglab.com](mailto:Proteintech-CN@ptglab.com)

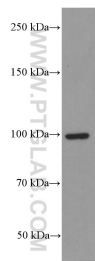
W: [ptgcn.com](http://ptgcn.com)

This product is exclusively available under Proteintech Group brand and is not available to purchase from any other manufacturer.

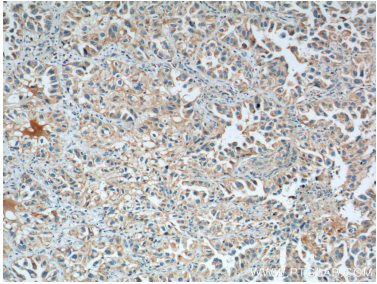
## Selected Validation Data



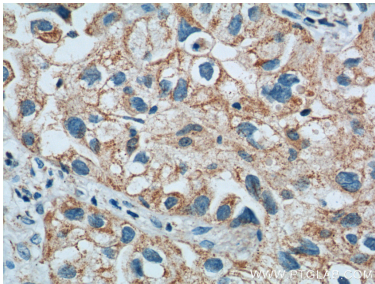
Various lysates were subjected to SDS PAGE followed by western blot with 66043-1-Ig (LONP1 antibody) at dilution of 1:5000 incubated at room temperature for 1.5 hours. This data was developed using the same antibody clone with 66043-1-PBS in a different storage buffer formulation.



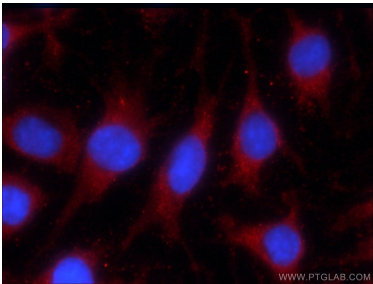
Jurkat cells were subjected to SDS PAGE followed by western blot with 66043-1-Ig (LONP1 Antibody) at dilution of 1:5000 incubated at room temperature for 1.5 hours. This data was developed using the same antibody clone with 66043-1-PBS in a different storage buffer formulation.



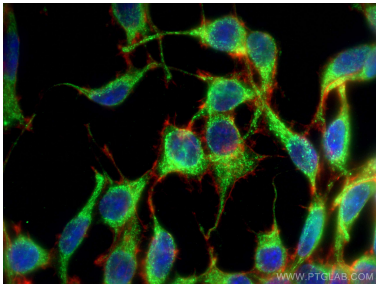
Immunohistochemical analysis of paraffin-embedded human lung cancer tissue slide using 66043-1-Ig (LONP1 Antibody) at dilution of 1:800 (under 10x lens). Heat mediated antigen retrieval with Tris-EDTA buffer (pH 9.0). This data was developed using the same antibody clone with 66043-1-PBS in a different storage buffer formulation.



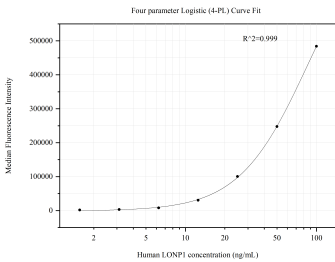
Immunohistochemical analysis of paraffin-embedded human lung cancer tissue slide using 66043-1-Ig (LONP1 Antibody) at dilution of 1:800 (under 40x lens). Heat mediated antigen retrieval with Tris-EDTA buffer (pH 9.0). This data was developed using the same antibody clone with 66043-1-PBS in a different storage buffer formulation.



Immunofluorescent analysis of C6 cells using 66043-1-Ig (LONP1 antibody) at dilution of 1:25 and Rhodamine-Goat anti-Mouse IgG. This data was developed using the same antibody clone with 66043-1-PBS in a different storage buffer formulation.



Immunofluorescent analysis of (-20°C Ethanol) fixed C6 cells using LONP1 antibody (66043-1-Ig, Clone: 1C6C12) at dilution of 1:200 and CoraLite®488-Conjugated AffiniPure Goat Anti-Mouse IgG(H+L), CL594-Phalloidin (red). This data was developed using the same antibody clone with 66043-1-PBS in a different storage buffer formulation.



Cytometric bead array standard curve of MP50672-1, LONP1 Monoclonal Matched Antibody Pair, PBS Only. Capture antibody: 66043-1-PBS. Detection antibody: 66043-2-PBS. Standard: Ag7306. Range: 1.563-100 ng/mL.