

For Research Use Only

# HSP60 Monoclonal antibody

Catalog Number: 66041-1-Ig

Featured Product

56 Publications



## Basic Information

Catalog Number:

66041-1-Ig

Concentration:

1000 µg/ml

Source:

Mouse

Isotype:

IgG1

Immunogen Catalog Number:

AG7848

GenBank Accession Number:

BC003030

GeneID (NCBI):

3329

UNIPROT ID:

P10809

Full Name:

heat shock 60kDa protein 1  
(chaperonin)

Calculated MW:

61 kDa

Observed MW:

60 kDa

Purification Method:

Protein A purification

CloneNo.:

2F10E7

Recommended Dilutions:

WB 1:5000-1:50000

IP 0.5-4.0 µg for 1.0-3.0 mg of total  
protein lysate

IHC 1:50-1:2000

IF/ICC 1:50-1:500

## Applications

Tested Applications:

WB, IHC, IF/ICC, IP, ELISA

Cited Applications:

WB, IF, IP, ELISA

Species Specificity:

human, mouse, rat

Cited Species:

human, mouse, rat, pig, chicken, yeast

**Note-IHC: suggested antigen retrieval with  
TE buffer pH 9.0; (\*) Alternatively, antigen  
retrieval may be performed with citrate  
buffer pH 6.0**

Positive Controls:

**WB** : HeLa cells, HEK-293 cells, Jurkat cells, HSC-T6  
cells, NIH/3T3 cells, pig brain, rabbit brain, chicken  
brain

**IP** : mouse liver tissue,

**IHC** : human ovary tumor tissue, human spleen tissue,  
human tonsillitis tissue, human skin cancer tissue,  
human testis tissue

**IF/ICC** : HeLa cells, HepG2 cells, Neuro-2a cells

## Background Information

HSPD1, also known as HSP60, belongs to the chaperonin family and acts as a chaperone to enhance cell survival under physiological stresses. Hsp60 has been shown to be connected with many aspects of cell functions such as protein folding and assembling of polypeptide chains in mitochondria. Recently it has been reported that HSP60 is associated with apoptosis or inhibition of cancer cell growth. (21822415)

## Notable Publications

Author	Pubmed ID	Journal	Application
Boyden Myers	36142714	Int J Mol Sci	IF
Jianli Tang	36106732	mBio	WB, IF, IP
Na Li	34557266	Oxid Med Cell Longev	IP

## Storage

Storage:

Store at -20°C. Stable for one year after shipment.

Storage Buffer:

PBS with 0.02% sodium azide and 50% glycerol, pH7.3

Aliquoting is unnecessary for -20°C storage

For technical support and original validation data for this product please contact:

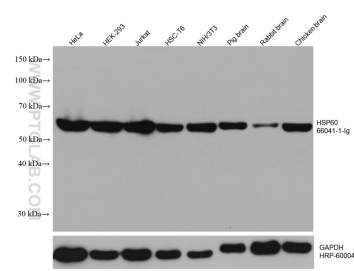
T: 4006900926

E: [Proteintech-CN@ptglab.com](mailto:Proteintech-CN@ptglab.com)

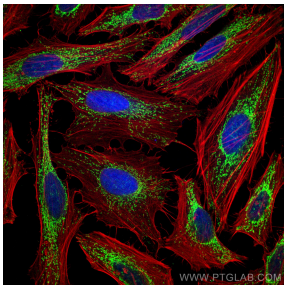
W: [ptgcn.com](http://ptgcn.com)

**This product is exclusively available under Proteintech Group brand and is not available to purchase from any other manufacturer.**

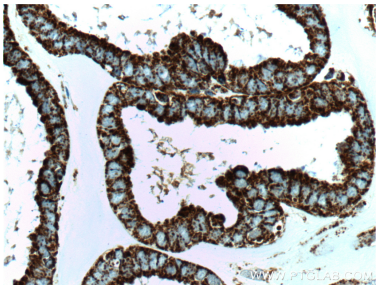
Selected Validation Data



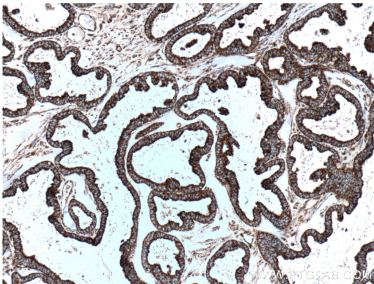
Various lysates were subjected to SDS PAGE followed by western blot with 66041-1-Ig (HSP60 antibody) at dilution of 1:20000 incubated at room temperature for 1.5 hours. The membrane was stripped and reblotted with HRP-conjugated GAPDH Monoclonal antibody (HRP-60004) as loading control.



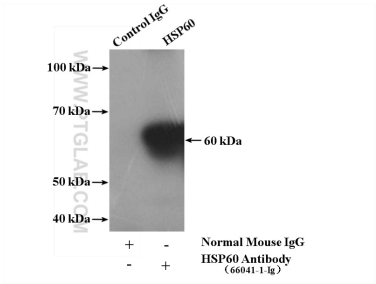
Immunofluorescent analysis of (4% PFA) fixed HeLa cells using HSP60 antibody (66041-1-Ig, Clone: 2F10E7) at dilution of 1:100 and CoraLite®488-Conjugated Goat Anti-Mouse IgG(H+L), (CL594-Phalloidin, red).



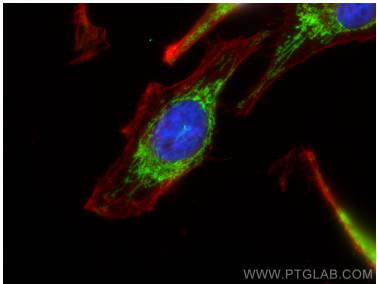
Immunohistochemical analysis of paraffin-embedded human ovary tumor tissue slide using 66041-1-Ig (HSP60 antibody at dilution of 1:500 (under 40x lens). Heat mediated antigen retrieval with Tris-EDTA buffer (pH 9.0).



Immunohistochemical analysis of paraffin-embedded human ovary tumor tissue slide using 66041-1-Ig (HSP60 antibody at dilution of 1:500 (under 10x lens). Heat mediated antigen retrieval with Tris-EDTA buffer (pH 9.0).



IP result of anti-HSP60 (IP:66041-1-Ig, 5ug; Detection:66041-1-Ig 1:2000) with mouse liver tissue lysate 4000ug.



Immunofluorescent analysis of (4% PFA) fixed HepG2 cells using HSP60 antibody (66041-1-Ig, Clone: 2F10E7) at dilution of 1:400 and CoraLite®488-Conjugated Goat Anti-Mouse IgG(H+L) (SA00013-1), CL594-phalloidin (red).