

For Research Use Only

FKBP52 Monoclonal antibody

Catalog Number: 66040-2-Ig



Basic Information

Catalog Number: 66040-2-Ig	GenBank Accession Number: BC007924	Purification Method: Protein A purification
Size: 2100 µg/ml	GeneID (NCBI): 2288	CloneNo.: 1B5F1
Source: Mouse	UNIPROT ID: Q02790	Recommended Dilutions: WB 1:5000-1:50000 IHC 1:1000-1:4000 IF 1:200-1:800
Isotype: IgG1	Full Name: FK506 binding protein 4, 59kDa	
Immunogen Catalog Number: AG18704	Calculated MW: 52 kDa	
	Observed MW: 52 kDa	

Applications

Tested Applications:

IF-P, IHC, WB, ELISA

Species Specificity:

human, rat

Note-IHC: suggested antigen retrieval with TE buffer pH 9.0; (*) Alternatively, antigen retrieval may be performed with citrate buffer pH 6.0

Positive Controls:

WB : HeLa cells, HSC-T6 cells, HEK-293 cells, HepG2 cells, Jurkat cells, K-562 cells

IHC : human breast cancer tissue,

IF : human breast cancer tissue,

Background Information

FKBP52 (FK506 binding protein 4) is a member of the immunophilin protein family that comprises intracellular protein effectors of immunosuppressive drugs, and it is known as a steroid receptor-associated protein. As a novel regulator of microtubule dynamics, FKBP52 is associated with the motor protein dynein and with the cytoskeleton during mitosis. FKBP52 is highly expressed in CNS regions susceptible to Alzheimer's, and plays a role in modulating toxicity of Abeta peptides. The protein can associate with the Tau function, and may help to decipher and modulate the events involved in Tau-induced neurodegeneration. In addition, FKBP52 is likely to play a role in growth and development of the male genitalia.

Storage

Storage:

Store at -20°C. Stable for one year after shipment.

Storage Buffer:

PBS with 0.02% sodium azide and 50% glycerol pH 7.3.

Aliquoting is unnecessary for -20°C storage

For technical support and original validation data for this product please contact:

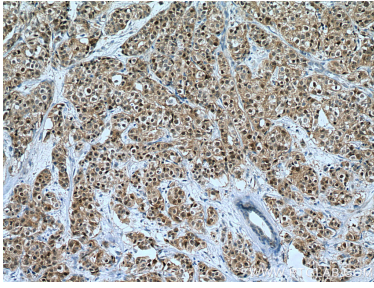
T: 4006900926

E: Proteintech-CN@ptglab.com

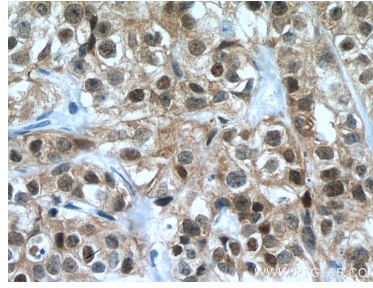
W: ptgcn.com

This product is exclusively available under Proteintech Group brand and is not available to purchase from any other manufacturer.

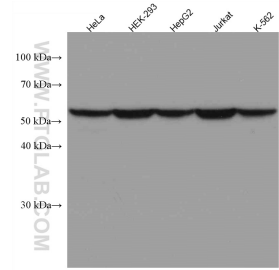
Selected Validation Data



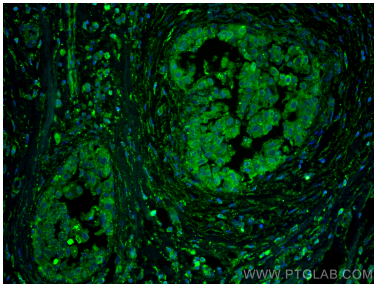
Immunohistochemical analysis of paraffin-embedded human breast cancer tissue slide using 66040-2-Ig (FKBP52 antibody) at dilution of 1:2000 (under 10x lens). Heat mediated antigen retrieval with Tris-EDTA buffer (pH 9.0).



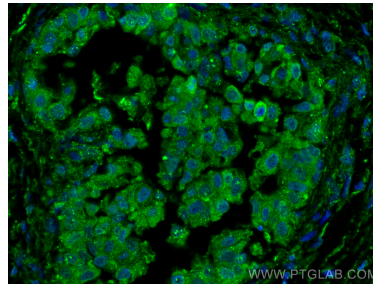
Immunohistochemical analysis of paraffin-embedded human breast cancer tissue slide using 66040-2-Ig (FKBP52 antibody) at dilution of 1:2000 (under 40x lens). Heat mediated antigen retrieval with Tris-EDTA buffer (pH 9.0).



Various lysates were subjected to SDS PAGE followed by western blot with 66040-2-Ig (FKBP52 antibody) at dilution of 1:20000 incubated at room temperature for 1.5 hours.



Immunofluorescent analysis of (4% PFA) fixed human breast cancer tissue using FKBP52 antibody (66040-2-Ig, Clone: 1B5F1) at dilution of 1:400 and CoraLite@488-Conjugated AffiniPure Goat Anti-Mouse IgG(H+L).



Immunofluorescent analysis of (4% PFA) fixed human breast cancer tissue using FKBP52 antibody (66040-2-Ig, Clone: 1B5F1) at dilution of 1:400 and CoraLite@488-Conjugated AffiniPure Goat Anti-Mouse IgG(H+L).