

For Research Use Only

# CPT1A Monoclonal antibody, PBS Only

Catalog Number: 66039-3-PBS



## Basic Information

Catalog Number: 66039-3-PBS	GenBank Accession Number: BC000185	Purification Method: Protein A purification
Concentration: 1 mg/ml	GeneID (NCBI): 1374	CloneNo.: 5D2B8
Source: Mouse	UNIPROT ID: P50416	
Isotype: IgG1	Full Name: carnitine palmitoyltransferase 1A (liver)	
Immunogen Catalog Number: AG7745	Calculated MW: 88 kDa	
	Observed MW: 86 kDa	

## Applications

Tested Applications:  
WB, IHC, Indirect ELISA

Species Specificity:  
human, mouse, rat

## Background Information

CPT1A, also named as CPT1, CPT1-L and L-CPTI, belongs to the carnitine/choline acetyltransferase family. Carnitine palmitoyltransferase (CPT) deficiencies are common disorders of mitochondrial fatty acid oxidation. The CPT system is made up of two separate proteins located in the outer (CPT1) and inner (CPT2) mitochondrial membranes. CPT1A is an active forms of related liver-type carnitine palmitoyltransferase I. (PMID: 11001805). CPT1A deficiency presents as recurrent attacks of fasting hypoketotic hypoglycemia. (PMID: 15363638). This antibody can bind the close sequences genes.

## Storage

Storage:  
Store at -80°C.  
**The product is shipped with ice packs. Upon receipt, store it immediately at -80°C**

Storage Buffer:  
PBS Only

For technical support and original validation data for this product please contact:

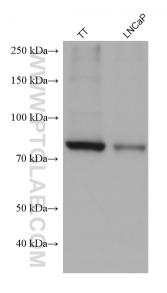
T: 4006900926

E: [Proteintech-CN@ptglab.com](mailto:Proteintech-CN@ptglab.com)

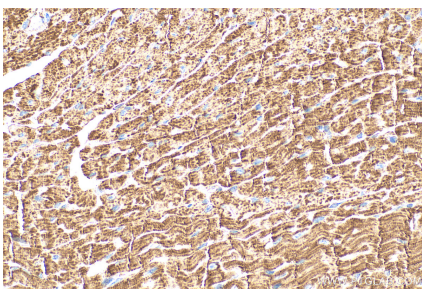
W: [ptgcn.com](http://ptgcn.com)

**This product is exclusively available under Proteintech Group brand and is not available to purchase from any other manufacturer.**

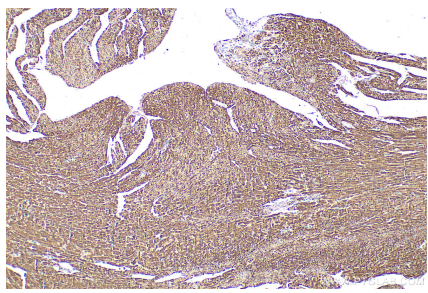
Selected Validation Data



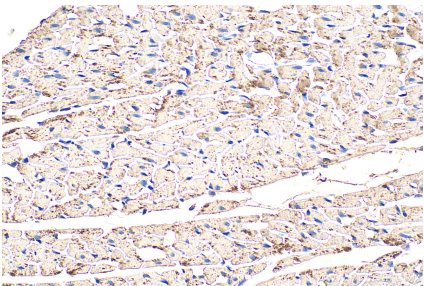
Various lysates were subjected to SDS PAGE followed by western blot with 66039-3-Ig (CPT1A antibody) at dilution of 1:10000 incubated at room temperature for 1.5 hours. This data was developed using the same antibody clone with 66039-3-PBS in a different storage buffer formulation.



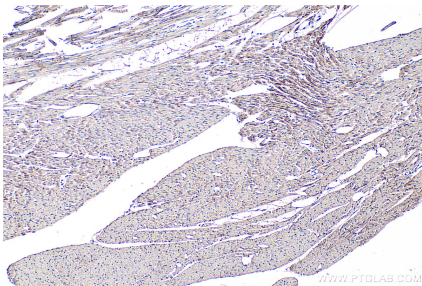
Immunohistochemical analysis of paraffin-embedded mouse heart tissue slide using 66039-3-Ig (CPT1A antibody) at dilution of 1:1000 (under 40x lens). Heat mediated antigen retrieval with Tris-EDTA buffer (pH 9.0). This data was developed using the same antibody clone with 66039-3-PBS in a different storage buffer formulation.



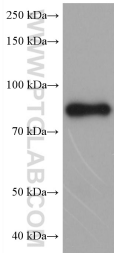
Immunohistochemical analysis of paraffin-embedded mouse heart tissue slide using 66039-3-Ig (CPT1A antibody) at dilution of 1:1000 (under 10x lens). Heat mediated antigen retrieval with Tris-EDTA buffer (pH 9.0). This data was developed using the same antibody clone with 66039-3-PBS in a different storage buffer formulation.



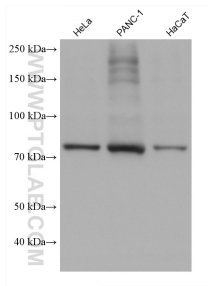
Immunohistochemical analysis of paraffin-embedded rat heart tissue slide using 66039-3-Ig (CPT1A antibody) at dilution of 1:1000 (under 40x lens). Heat mediated antigen retrieval with Tris-EDTA buffer (pH 9.0). This data was developed using the same antibody clone with 66039-3-PBS in a different storage buffer formulation.



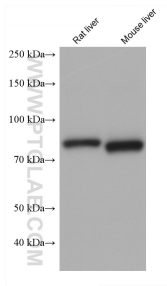
Immunohistochemical analysis of paraffin-embedded rat heart tissue slide using 66039-3-Ig (CPT1A antibody) at dilution of 1:1000 (under 10x lens). Heat mediated antigen retrieval with Tris-EDTA buffer (pH 9.0). This data was developed using the same antibody clone with 66039-3-PBS in a different storage buffer formulation.



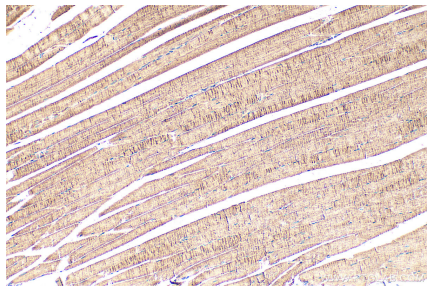
mouse liver tissue were subjected to SDS PAGE followed by western blot with 66039-3-Ig (CPT1A antibody) at dilution of 1:10000 incubated at room temperature for 1.5 hours. This data was developed using the same antibody clone with 66039-3-PBS in a different storage buffer formulation.



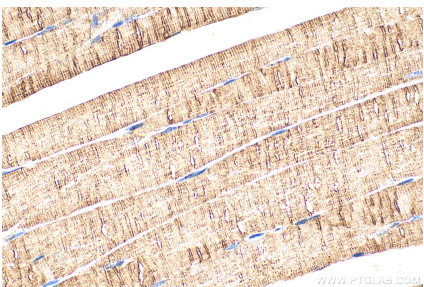
Various lysates were subjected to SDS PAGE followed by western blot with 66039-3-Ig (CPT1A antibody) at dilution of 1:10000 incubated at room temperature for 1.5 hours. This data was developed using the same antibody clone with 66039-3-PBS in a different storage buffer formulation.



Various lysates were subjected to SDS PAGE followed by western blot with 66039-3-Ig (CPT1A antibody) at dilution of 1:10000 incubated at room temperature for 1.5 hours. This data was developed using the same antibody clone with 66039-3-PBS in a different storage buffer formulation.



Immunohistochemical analysis of paraffin-embedded mouse skeletal muscle tissue slide using 66039-3-Ig (CPT1A antibody) at dilution of 1:1000 (under 10x lens). Heat mediated antigen retrieval with Tris-EDTA buffer (pH 9.0). This data was developed using the same antibody clone with 66039-3-PBS in a different storage buffer formulation.



Immunohistochemical analysis of paraffin-embedded mouse skeletal muscle tissue slide using 66039-3-Ig (CPT1A antibody) at dilution of 1:1000 (under 40x lens). Heat mediated antigen retrieval with Tris-EDTA buffer (pH 9.0). This data was developed using the same antibody clone with 66039-3-PBS in a different storage buffer formulation.