

For Research Use Only

Annexin A2 Monoclonal antibody, PBS Only

Catalog Number: 66035-1-PBS

Featured Product



Basic Information

Catalog Number:

66035-1-PBS

Size:

1 mg/ml

Source:

Mouse

Isotype:

IgG2a

Immunogen Catalog Number:

AG16654

GenBank Accession Number:

BC016774

GeneID (NCBI):

302

ENSEMBL Gene ID:

ENSG00000182718

UNIPROT ID:

P07355

Full Name:

annexin A2

Calculated MW:

339 aa, 39 kDa

Observed MW:

39 kDa

Purification Method:

Protein A purification

CloneNo.:

1C1E12

Applications

Tested Applications:

WB, IHC, IF/ICC, FC (Intra), ELISA

Species Specificity:

human, mouse, rat

Background Information

Annexin A2 (ANXA2), also named Annexin-2 or Lipocortin II, is a Ca^{2+} binding protein that is up-regulated in virally transformed cell lines and human tumors. This calcium-regulated membrane-binding protein, whose affinity for calcium is greatly enhanced by anionic phospholipids, may cross-link plasma membrane phospholipids with actin and the cytoskeleton and be involved with exocytosis. Heat-stress response may also involve Annexin-2.

Storage

Storage:

Store at $-80^{\circ}C$.

The product is shipped with ice packs. Upon receipt, store it immediately at $-80^{\circ}C$

Storage Buffer:

PBS Only

For technical support and original validation data for this product please contact:

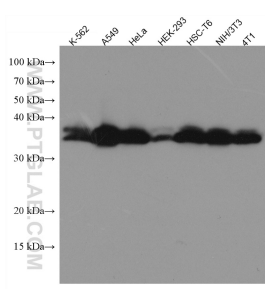
T: 4006900926

E: Proteintech-CN@ptglab.com

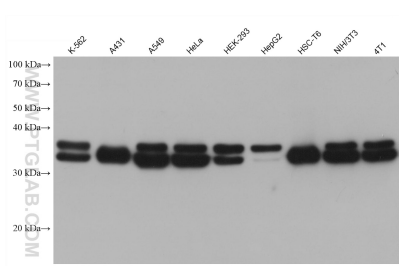
W: ptgcn.com

This product is exclusively available under Proteintech Group brand and is not available to purchase from any other manufacturer.

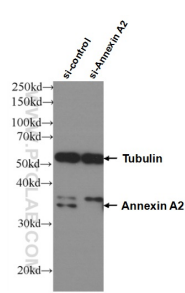
Selected Validation Data



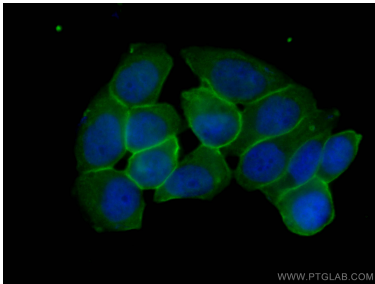
Various lysates were subjected to SDS PAGE followed by western blot with 66035-1-Ig (Annexin A2 antibody) at dilution of 1:20000 incubated at room temperature for 1.5 hours. This data was developed using the same antibody clone with 66035-1-PBS in a different storage buffer formulation.



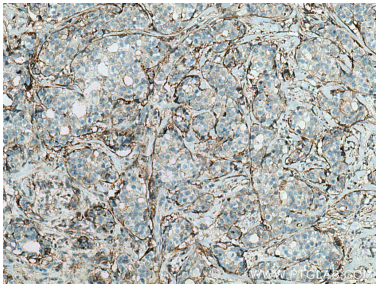
Various lysates were subjected to SDS PAGE followed by western blot with 66035-1-Ig (Annexin A2 antibody) at dilution of 1:20000 incubated at room temperature for 1.5 hours. This data was developed using the same antibody clone with 66035-1-PBS in a different storage buffer formulation.



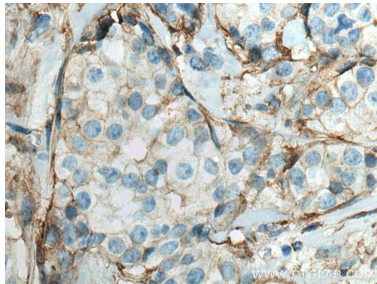
WB result of Annexin A2 antibody (66035-1-Ig; 1:20000; incubated at room temperature for 1.5 hours) with sh-Control and sh-Annexin A2 transfected HEK-293 cells. This data was developed using the same antibody clone with 66035-1-PBS in a different storage buffer formulation.



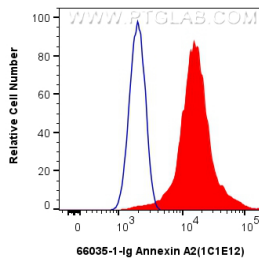
Immunofluorescent analysis of (-20°C Ethanol) fixed T-47D cells using 66035-1-Ig (Annexin A2 antibody), at dilution of 1:500 and CoraLite®488-Conjugated AffiniPure Goat Anti-Mouse IgG(H+L). This data was developed using the same antibody clone with 66035-1-PBS in a different storage buffer formulation.



Immunohistochemical analysis of paraffin-embedded human breast cancer tissue slide using 66035-1-Ig (Annexin A2 antibody) at dilution of 1:10000 (under 10x lens). Heat mediated antigen retrieval with Tris-EDTA buffer (pH 9.0). This data was developed using the same antibody clone with 66035-1-PBS in a different storage buffer formulation.



Immunohistochemical analysis of paraffin-embedded human breast cancer tissue slide using 66035-1-Ig (Annexin A2 antibody) at dilution of 1:10000 (under 40x lens). Heat mediated antigen retrieval with Tris-EDTA buffer (pH 9.0). This data was developed using the same antibody clone with 66035-1-PBS in a different storage buffer formulation.



1x10⁶ HeLa cells were intracellularly stained with 0.25 ug Annexin A2 Monoclonal antibody (66035-1-Ig, Clone:1C1E12) and CoraLite®488-Conjugated Goat Anti-Mouse IgG(H+L) (SA00013-1)(red), or 0.25 ug Mouse IgG2a isotype control Mouse McAb (66360-2-Ig, Clone: 11A1B2) (blue). Cells were fixed with 4% PFA and permeabilized with Flow Cytometry Perm Buffer (PF00011-C). This data was developed using the same antibody clone with 66035-1-PBS in a different storage buffer

