

TTF1 Monoclonal antibody

Catalog Number: 66034-1-Ig 4 Publications

Basic Information

Catalog Number:

66034-1-Ig

Size:

1000 µg/ml

Source:

Mouse

Isotype:

IgG3

GenBank Accession Number:

NM_003317

GeneID (NCBI):

7080

UNIPROT ID:

P43699

Full Name:

NK2 homeobox 1

Calculated MW:

42 kDa

Observed MW:

41 kDa

Purification Method:

Protein A purification

CloneNo.:

2C8F3

Recommended Dilutions:

WB 1:1000-1:8000

IHC 1:50-1:500

IF-P 1:200-1:800

Applications

Tested Applications:

WB, IHC, IF-P, ELISA

Cited Applications:

WB, IHC

Species Specificity:

human, pig

Cited Species:

human

Note-IHC: suggested antigen retrieval with TE buffer pH 9.0; (*) Alternatively, antigen retrieval may be performed with citrate buffer pH 6.0

Positive Controls:

WB : HepG2 cells,

IHC : human thyroid cancer tissue, human lung cancer tissue

IF-P : human lung cancer tissue,

Background Information

Homeobox protein Nkx-2.1 (NKX2-1), also named Thyroid nuclear factor 1, Thyroid transcription factor 1 (TTF1). It is a transcription factor that binds and activates the promoter of thyroid specific genes such as thyroglobulin, thyroperoxidase, and thyrotropin receptor. Crucial in the maintenance of the thyroid differentiation phenotype. May play a role in lung development and surfactant homeostasis. Defects in NKX2-1 are the cause of benign hereditary chorea (BHC), choreoathetosis, hypothyroidism, and neonatal respiratory distress (CHNRD).

Notable Publications

Author	Pubmed ID	Journal	Application
Kun Wang	35415320	ACS Omega	WB
Merve Özel	33689126	Cell Biochem Biophys	WB
Karina Malmros	39441367	J Cancer Res Clin Oncol	WB

Storage

Storage:

Store at -20°C. Stable for one year after shipment.

Storage Buffer:

PBS with 0.02% sodium azide and 50% glycerol pH 7.3.

Aliquoting is unnecessary for -20°C storage

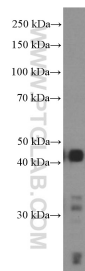
For technical support and original validation data for this product please contact:

T: 4006900926

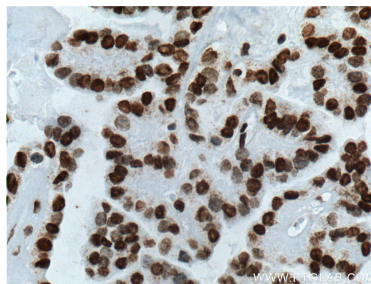
E: Proteintech-CN@ptglab.comW: ptgcn.com

This product is exclusively available under Proteintech Group brand and is not available to purchase from any other manufacturer.

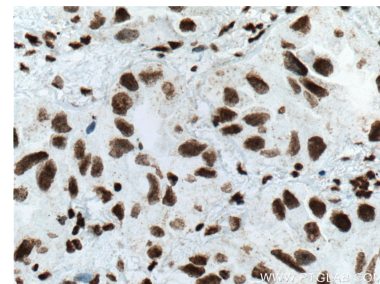
Selected Validation Data



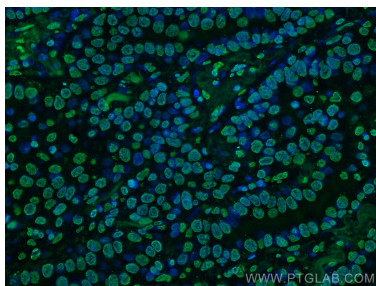
HepG2 cells were subjected to SDS PAGE followed by western blot with 66034-1-Ig (TTF1 antibody at dilution of 1:4000 incubated at room temperature for 1.5 hours.



Immunohistochemical analysis of paraffin-embedded human thyroid cancer tissue slide using 66034-1-Ig (TTF1 antibody at dilution of 1:800 (under 40x lens). Heat mediated antigen retrieval with Tris-EDTA buffer (pH 9.0).



Immunohistochemical analysis of paraffin-embedded human lung cancer tissue slide using 66034-1-Ig (TTF1 antibody at dilution of 1:800 (under 40x lens). Heat mediated antigen retrieval with Tris-EDTA buffer (pH 9.0).



Immunofluorescent analysis of (4% PFA) fixed human lung cancer tissue using TTF1 antibody (66034-1-Ig, Clone: 2C8F3) at dilution of 1:400 and CoraLite®488-Conjugated Goat Anti-Mouse IgG(H+L).