

# Protein C inhibitor Monoclonal antibody

Catalog Number: 66030-1-Ig

## Basic Information

**Catalog Number:**

66030-1-Ig

**Size:**

1600 µg/ml

**Source:**

Mouse

**Isotype:**

IgG2a

**Immunogen Catalog Number:**

AG18094

**GenBank Accession Number:**

BC008915

**GeneID (NCBI):**

5104

**UNIPROT ID:**

P05154

**Full Name:**

serpin peptidase inhibitor, clade A  
(alpha-1 antiproteinase, antitrypsin),  
member 5

**Calculated MW:**

46 kDa

**Observed MW:**

46 kDa

**Purification Method:**

Protein A purification

**CloneNo.:**

2H6G2

**Recommended Dilutions:**

WB 1:500-1:2000

IHC 1:50-1:500

IF-P 1:200-1:800

## Applications

**Tested Applications:**

IF-P, IHC, WB, ELISA

**Species Specificity:**

human

**Note-IHC: suggested antigen retrieval with  
TE buffer pH 9.0; (\*) Alternatively, antigen  
retrieval may be performed with citrate  
buffer pH 6.0**

**Positive Controls:**

WB : Human testis, tissue

IHC : human ovary tumor tissue,

IF-P : human ovary tumor tissue,

## Background Information

SERPINA5 (also called Protein C Inhibitor, PCI ) is a serpin type of serine protease inhibitor that is found in many tissues and fluids in human, including blood plasma, seminal plasma and urine. PCI found in blood originates from the liver and is capable of inhibiting several serine proteases involved in the regulation of coagulation and fibrinolysis, including activated protein C, thrombin, factor Xa, various kallikreins and plasminogen activators. PCI has been found to have antimicrobial and antitumor properties and thus appears to be a multi-functional protein.

## Storage

**Storage:**

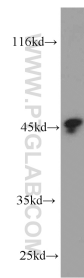
Store at -20°C. Stable for one year after shipment.

**Storage Buffer:**

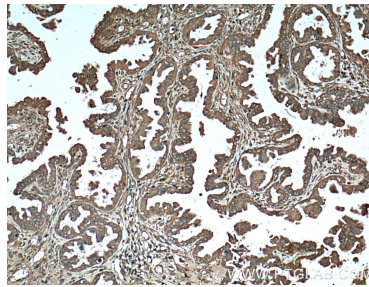
PBS with 0.02% sodium azide and 50% glycerol pH 7.3.

Aliquoting is unnecessary for -20°C storage

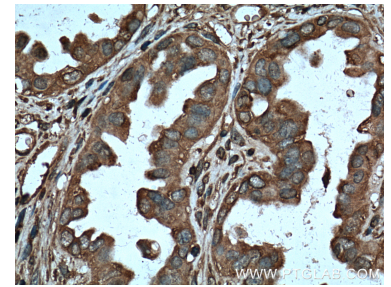
## Selected Validation Data



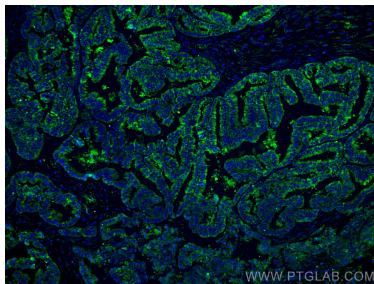
human testis tissue were subjected to SDS PAGE followed by western blot with 66030-1-Ig (Protein C inhibitor antibody) at dilution of 1:1000 incubated at room temperature for 1.5 hours.



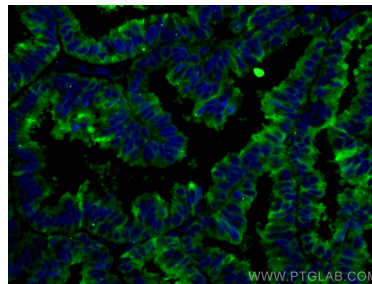
Immunohistochemical analysis of paraffin-embedded human ovary tumor tissue slide using 66030-1-Ig (Protein C inhibitor antibody at dilution of 1:200 (under 10x lens). Heat mediated antigen retrieval with Tris-EDTA buffer (pH 9.0).



Immunohistochemical analysis of paraffin-embedded human ovary tumor tissue slide using 66030-1-Ig (Protein C inhibitor antibody at dilution of 1:200 (under 40x lens). Heat mediated antigen retrieval with Tris-EDTA buffer (pH 9.0).



Immunofluorescent analysis of (4% PFA) fixed human ovary tumor tissue using Protein C inhibitor antibody (66030-1-Ig, Clone: 2H6G2 ) at dilution of 1:400 and CoraLite®488-Conjugated AffiniPure Goat Anti-Mouse IgG(H+L).



Immunofluorescent analysis of (4% PFA) fixed human ovary tumor tissue using Protein C inhibitor antibody (66030-1-Ig, Clone: 2H6G2 ) at dilution of 1:400 and CoraLite®488-Conjugated AffiniPure Goat Anti-Mouse IgG(H+L).