

For Research Use Only

MCL1 Monoclonal antibody, PBS Only (Capture)

Catalog Number: 66026-1-PBS

Featured Product



Basic Information

Catalog Number:

66026-1-PBS

Size:

1mg/ml

Source:

Mouse

Isotype:

IgG2b

Immunogen Catalog Number:

AG10609

GenBank Accession Number:

BC107735

GeneID (NCBI):

4170

UNIPROT ID:

Q07820

Full Name:

myeloid cell leukemia sequence 1 (BCL2-related)

Calculated MW:

350 aa, 37 kDa

Observed MW:

35 kDa

Purification Method:

Protein A purification

CloneNo.:

1E3C2

Applications

Tested Applications:

WB, IHC, IF/ICC, Cytometric bead array, Indirect ELISA

Species Specificity:

human

Background Information

MCL-1 is an anti-apoptotic member of the Bcl-2 family originally isolated from the ML-1 human myeloid leukemia cell line. Similar to BCL2 and BCL2L1, MCL1 can interact with BAX and/or BAK1 to inhibit mitochondria-mediated apoptosis. Mcl-1 is critical for the proliferation and survival of myeloma cells in vitro, and overexpression of Mcl-1 protein in myeloma cells is associated with relapse and short event-free survival in multiple myeloma patients. Recent studies show that MCL-1 is upregulated in numerous haematological and solid tumour malignancies. Therefore, MCL-1 has been suggested as a potential new therapeutic target.

Storage

Storage:

Store at -80°C.

The product is shipped with ice packs. Upon receipt, store it immediately at -80°C

Storage Buffer:

PBS Only

For technical support and original validation data for this product please contact:

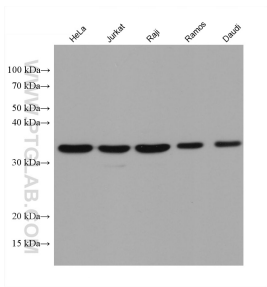
T: 4006900926

E: Proteintech-CN@ptglab.com

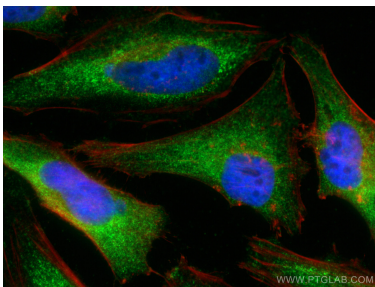
W: ptgcn.com

This product is exclusively available under Proteintech Group brand and is not available to purchase from any other manufacturer.

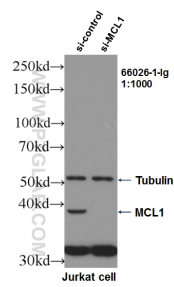
Selected Validation Data



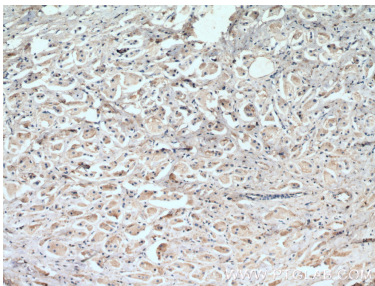
Various lysates were subjected to SDS PAGE followed by western blot with 66026-1-Ig (MCL1 antibody) at dilution of 1:5000 incubated at room temperature for 1.5 hours. This data was developed using the same antibody clone with 66026-1-PBS in a different storage buffer formulation.



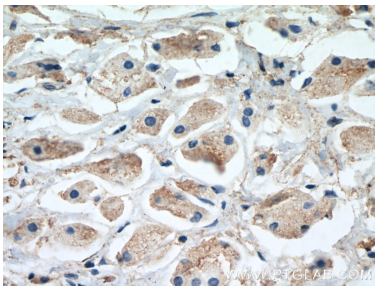
Immunofluorescent analysis of (4% PFA) fixed HeLa cells using MCL1 antibody (66026-1-Ig, Clone: 1E3C2) at dilution of 1:400 and CoraLite® 488-Conjugated AffiniPure Goat Anti-Mouse IgG(H+L), CL594-Phalloidin (red). This data was developed using the same antibody clone with 66026-1-PBS in a different storage buffer formulation.



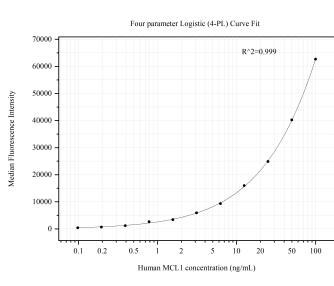
WB result of MCL1 antibody (66026-1-Ig, 1:1000) with si-Control and si-MCL1 transfected Jurkat cells. This data was developed using the same antibody clone with 66026-1-PBS in a different storage buffer formulation.



Immunohistochemical analysis of paraffin-embedded human breast cancer tissue slide using 66026-1-Ig (MCL1 antibody) at dilution of 1:500 (under 10x lens). Heat mediated antigen retrieval with Tris-EDTA buffer (pH 9.0). This data was developed using the same antibody clone with 66026-1-PBS in a different storage buffer formulation.



Immunohistochemical analysis of paraffin-embedded human breast cancer tissue slide using 66026-1-Ig (MCL1 antibody) at dilution of 1:500 (under 40x lens). Heat mediated antigen retrieval with Tris-EDTA buffer (pH 9.0). This data was developed using the same antibody clone with 66026-1-PBS in a different storage buffer formulation.



Cytometric bead array standard curve of MP50655-1, MCL1 Monoclonal Matched Antibody Pair, PBS Only. Capture antibody: 66026-1-PBS. Detection antibody: 66026-2-PBS. Standard: Ag10609. Range: 0.098-100 ng/mL.