

For Research Use Only

EIF3D Monoclonal antibody, PBS Only

Catalog Number: 66024-1-PBS

Featured Product



Basic Information

Catalog Number:

66024-1-PBS

Size:

1mg/ml

Source:

Mouse

Isotype:

IgG2b

Immunogen Catalog Number:

AG18092

GenBank Accession Number:

BC000328

GeneID (NCBI):

8664

UNIPROT ID:

O15371

Full Name:

eukaryotic translation initiation factor 3, subunit D

Calculated MW:

66 kDa

Observed MW:

66 kDa

Purification Method:

Protein A purification

CloneNo.:

2C5A3

Applications

Tested Applications:

WB, IHC, IF/ICC, Indirect ELISA

Species Specificity:

human, mouse, rat

Background Information

The mammalian translation initiation factor 3 (eIF3), is a multiprotein complex of ~600 kDa that binds to the 40 S ribosome and promotes the binding of methionyl-tRNAi and mRNA. The eIF3S7(p66) is the major RNA binding subunit in this complex. Human eIF3-p66 shares 64% sequence identity with a hypothetical *Caenorhabditis elegans* protein, presumably the p66 homolog. Deletion analyses of recombinant derivatives of eIF3-p66 show that the RNA-binding domain lies within an N-terminal 71-amino acid region rich in lysine and arginine.

Storage

Storage:

Store at -80°C.

The product is shipped with ice packs. Upon receipt, store it immediately at -80°C

Storage Buffer:

PBS Only

For technical support and original validation data for this product please contact:

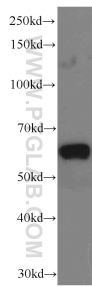
T: 4006900926

E: Proteintech-CN@ptglab.com

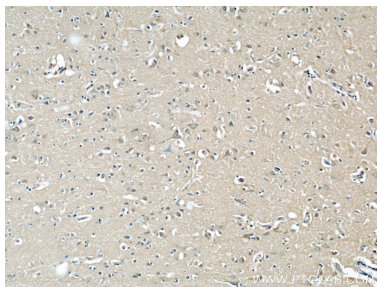
W: ptgcn.com

This product is exclusively available under Proteintech Group brand and is not available to purchase from any other manufacturer.

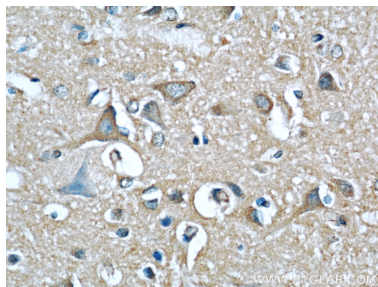
Selected Validation Data



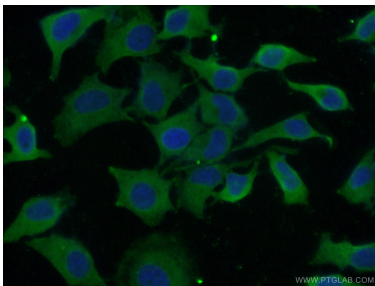
HepG2 cells were subjected to SDS PAGE followed by western blot with 66024-1-Ig (EIF3D antibody) at dilution of 1:1000 incubated at room temperature for 1.5 hours. This data was developed using the same antibody clone with 66024-1-PBS in a different storage buffer formulation.



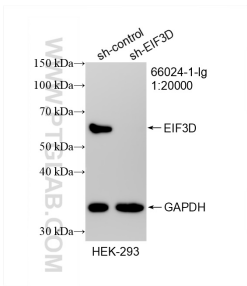
Immunohistochemical analysis of paraffin-embedded human brain using 66024-1-Ig(EIF3D antibody) at dilution of 1:50 (under 10x lens). This data was developed using the same antibody clone with 66024-1-PBS in a different storage buffer formulation.



Immunohistochemical analysis of paraffin-embedded human brain using 66024-1-Ig(EIF3D antibody) at dilution of 1:50 (under 40x lens). This data was developed using the same antibody clone with 66024-1-PBS in a different storage buffer formulation.



Immunofluorescent analysis of (10% Formaldehyde) fixed HeLa cells using 66024-1-Ig(EIF3D antibody) at dilution of 1:50 and Alexa Fluor 488-conjugated AffiniPure Goat Anti-Mouse IgG(H+L). This data was developed using the same antibody clone with 66024-1-PBS in a different storage buffer formulation.



WB result of EIF3D antibody (66024-1-Ig; 1:20000; incubated at room temperature for 1.5 hours) with sh-Control and sh-EIF3D transfected HEK-293 cells. This data was developed using the same antibody clone with 66024-1-PBS in a different storage buffer formulation.