

ECM1 Monoclonal antibody

Catalog Number: 66023-1-Ig

Basic Information

Catalog Number: 66023-1-Ig	GenBank Accession Number: BC023505	Purification Method: Protein A purification
Size: 1360 µg/ml	GeneID (NCBI): 1893	CloneNo.: 6A12B3
Source: Mouse	UNIPROT ID: Q16610	Recommended Dilutions: WB 1:500-1:1000 IHC 1:20-1:200
Isotype: IgG2a	Full Name: extracellular matrix protein 1	
Immunogen Catalog Number: AG17955	Calculated MW: 540 aa, 61 kDa Observed MW: 61 kDa	

Applications

Tested Applications: IHC, WB, ELISA	Positive Controls:
Species Specificity: human	WB : MCF7 cells, COLO 320 cells, human heart tissue
Note-IHC: suggested antigen retrieval with TE buffer pH 9.0; (*) Alternatively, antigen retrieval may be performed with citrate buffer pH 6.0	IHC : human breast cancer tissue, human liver cancer tissue

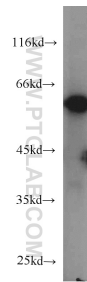
Background Information

Extracellular matrix protein 1 (ECM1) is a glycoprotein involved in a number of biological processes such as bone formation, skin differentiation, cell proliferation, and promotes angiostasis. Pathologically, ECM1 contributes to the formation and metastasis of several types of cancer including breast, thyroid and hepatocellular cancers. (21128013) It inhibits MMP9 proteolytic activity.

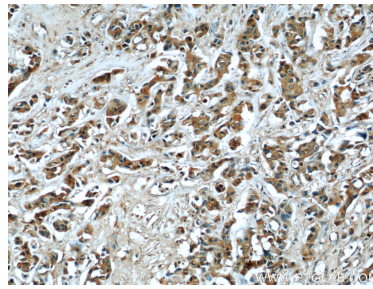
Storage

Storage:
Store at -20°C. Stable for one year after shipment.
Storage Buffer:
PBS with 0.02% sodium azide and 50% glycerol pH 7.3.
Aliquoting is unnecessary for -20°C storage

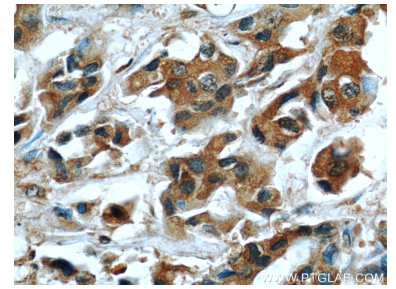
Selected Validation Data



MCF7 cells were subjected to SDS PAGE followed by western blot with 66023-1-Ig (ECM1 antibody) at dilution of 1:500 incubated at room temperature for 1.5 hours.



Immunohistochemical analysis of paraffin-embedded human breast cancer using 66023-1-Ig (ECM1 antibody) at dilution of 1:50 (under 10x lens).



Immunohistochemical analysis of paraffin-embedded human breast cancer using 66023-1-Ig (ECM1 antibody) at dilution of 1:50 (under 40x lens).