

# CDC6 Monoclonal antibody, PBS Only

Catalog Number: 66021-1-PBS

## Basic Information

**Catalog Number:**

66021-1-PBS

**Size:**

1mg/ml

**Source:**

Mouse

**Isotype:**

IgG1

**Immunogen Catalog Number:**

AG17958

**GenBank Accession Number:**

BC025232

**GeneID (NCBI):**

990

**UNIPROT ID:**

Q99741

**Full Name:**

cell division cycle 6 homolog (S. cerevisiae)

**Calculated MW:**

560 aa, 63 kDa

**Observed MW:**

65 kDa

**Purification Method:**

Protein G purification

**CloneNo.:**

6F12D2

## Applications

**Tested Applications:**

WB, IF/ICC, Indirect ELISA

**Species Specificity:**

human, mouse, rat

## Background Information

CDC6, also named as CDC18L and HsCDC18, belongs to the CDC6/cdc18 family. It is involved in the initiation of DNA replication and functions as a regulator at the early steps of DNA replication. It also participates in checkpoint controls that ensure DNA replication is completed before mitosis is initiated. It localizes in cell nucleus during cell cycle G1, but translocates to the cytoplasm at the start of S phase. The subcellular translocation of this protein during cell cycle is regulated through its phosphorylation by Cdk. Defects in CDC6 are the cause of Meier-Gorlin syndrome type 5 (MGORS5). MGORS5 is a syndrome characterized by bilateral microtia, aplasia/hypoplasia of the patellae, and severe intrauterine and postnatal growth retardation with short stature and poor weight gain. This antibody is a mouse monoclonal antibody raised against residues near the C terminus of human CDC6.

## Storage

**Storage:**

Store at -80°C.

**The product is shipped with ice packs. Upon receipt, store it immediately at -80°C****Storage Buffer:**

PBS Only

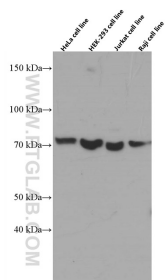
For technical support and original validation data for this product please contact:

T: 4006900926

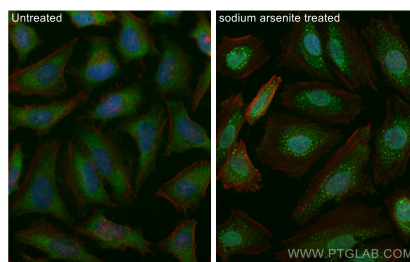
E: [Proteintech-CN@ptglab.com](mailto:Proteintech-CN@ptglab.com)W: [ptgcn.com](http://ptgcn.com)

This product is exclusively available under Proteintech Group brand and is not available to purchase from any other manufacturer.

## Selected Validation Data



Various lysates were subjected to SDS PAGE followed by western blot with 66021-1-Ig (CDC6 antibody) at dilution of 1:8000 incubated at room temperature for 1.5 hours. This data was developed using the same antibody clone with 66021-1-PBS in a different storage buffer formulation.



Immunofluorescent analysis of (4% PFA) fixed sodium arsenite treated HeLa cells using CDC6 antibody (66021-1-Ig, Clone: 6F12D2 ) at dilution of 1:800 and CoraLite®488-Conjugated Goat Anti-Mouse IgG(H+L) (SA00013-1), CL594-phalloidin (red). This data was developed using the same antibody clone with 66021-1-PBS in a different storage buffer formulation.