

For Research Use Only

# MAD2L1 Monoclonal antibody, PBS Only



Catalog Number: 66014-1-PBS

Featured Product

## Basic Information

Catalog Number:

66014-1-PBS

Size:

1 mg/ml

Source:

Mouse

Isotype:

IgG2b

Immunogen Catalog Number:

AG17512

GenBank Accession Number:

BC000356

GeneID (NCBI):

4085

UNIPROT ID:

Q13257

Full Name:

MAD2 mitotic arrest deficient-like 1 (yeast)

Calculated MW:

24 kDa

Observed MW:

24 kDa

Purification Method:

Protein A purification

CloneNo.:

2F5F12

## Applications

Tested Applications:

WB, Indirect ELISA, IHC

Species Specificity:

human

## Background Information

MAD2 mitotic arrest deficient-like 1 (yeast) (MAD2L1, synonyms: MAD2, HSMAD2) is a component of the mitotic spindle assembly checkpoint that prevents the onset of anaphase until all chromosomes are properly aligned at the metaphase plate. MAD2L1 is localized to human chromosome band 5q23.3 by in situ hybridization.

## Storage

Storage:

Store at -80°C.

The product is shipped with ice packs. Upon receipt, store it immediately at -80°C

Storage Buffer:

PBS Only

For technical support and original validation data for this product please contact:

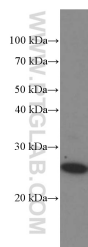
T: 4006900926

E: [Proteintech-CN@ptglab.com](mailto:Proteintech-CN@ptglab.com)

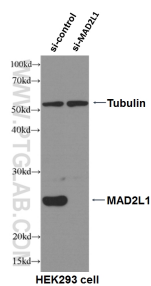
W: [ptgcn.com](http://ptgcn.com)

This product is exclusively available under Proteintech Group brand and is not available to purchase from any other manufacturer.

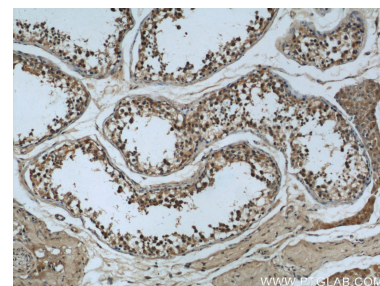
## Selected Validation Data



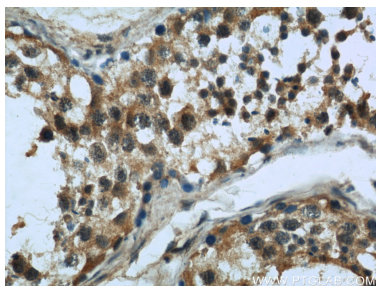
HEK-293 cells were subjected to SDS PAGE followed by western blot with 66014-1-Ig (MAD2L1 Antibody) at dilution of 1:3000 incubated at room temperature for 1.5 hours. This data was developed using the same antibody clone with 66014-1-PBS in a different storage buffer formulation.



WB result of MAD2L1 antibody (66014-1-Ig, 1:2000) with si-control and si-MAD2L1 transfected HEK293 cells. This data was developed using the same antibody clone with 66014-1-PBS in a different storage buffer formulation.



Immunohistochemical analysis of paraffin-embedded human testis slide using 66014-1-Ig (MAD2L1 Antibody) at dilution of 1:50. This data was developed using the same antibody clone with 66014-1-PBS in a different storage buffer formulation.



Immunohistochemical analysis of paraffin-embedded human testis slide using 66014-1-Ig (MAD2L1 Antibody) at dilution of 1:50. This data was developed using the same antibody clone with 66014-1-PBS in a different storage buffer formulation.