

For Research Use Only

# HLA class I ABC Monoclonal antibody, PBS Only

Catalog Number: 66013-1-PBS

Featured Product



## Basic Information

Catalog Number:

66013-1-PBS

Size:

1000  $\mu$ g/ml

Source:

Mouse

Isotype:

IgG2b

Immunogen Catalog Number:

AG7488

GenBank Accession Number:

BC003069

GeneID (NCBI):

3105

UNIPROT ID:

P04439

Full Name:

major histocompatibility complex,  
class I, A

Calculated MW:

41 kDa

Observed MW:

40-44 kDa

Purification Method:

Protein A purification

CloneNo.:

5C5B7

## Applications

Tested Applications:

WB, IHC, IF/ICC, FC, Indirect ELISA

Species Specificity:

human, pig

## Background Information

Human major histocompatibility complex (MHC) antigens, also referred to as human leukocyte antigens (HLA), are encoded by genes located on the short arm of chromosome 6 (6p21.3). There are two classes of HLA antigens: class I (HLA-A, B and C) and class II (HLA-D). This class I molecules are polymorphic membrane glycoproteins composed of a heavy (alpha) chain (44 kDa) which is encoded by a HLA class I gene (HLA-A, B or C), and  $\beta$  2-microglobulin light (beta) chain (12 kDa). They are involved in the presentation of foreign antigens to the immune system. (PMID: 667938; 3375250)

## Storage

Storage:

Store at -80°C.

**The product is shipped with ice packs. Upon receipt, store it immediately at -80°C**

Storage Buffer:

PBS Only

For technical support and original validation data for this product please contact:

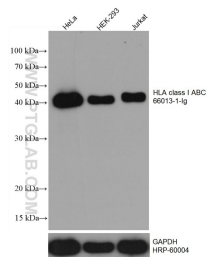
T: 4006900926

E: [Proteintech-CN@ptglab.com](mailto:Proteintech-CN@ptglab.com)

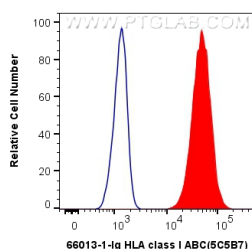
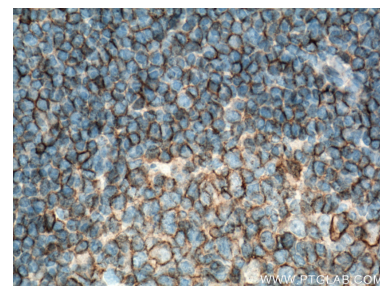
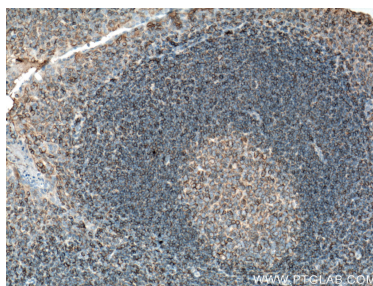
W: [ptgcn.com](http://ptgcn.com)

**This product is exclusively available under Proteintech Group brand and is not available to purchase from any other manufacturer.**

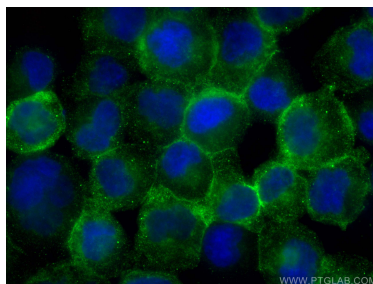
## Selected Validation Data



Various lysates were subjected to SDS PAGE followed by western blot with 66013-1-Ig (HLA class I ABC antibody) at dilution of 1:10000 incubated at room temperature for 1.5 hours. The membrane was stripped and reblotted with HRP-conjugated GAPDH Monoclonal antibody (HRP-60004) as loading control. This data was developed using the same antibody clone with 66013-1-PBS in a different storage buffer formulation.



$1 \times 10^6$  Raji cells were surface stained with 0.4 ug Anti-Human HLA class I ABC (66013-1-Ig, Clone:5C5B7) and Coralite®488-Conjugated AffiniPure Goat Anti-Mouse IgG(H+L) at dilution 1:1000 (red), or 0.4 ug Mouse IgG2b Isotype Control (MPC-11) (65128-1-Ig, Clone: MPC-11) (blue). Cells were not fixed. This data was developed using the same antibody clone with 66013-1-PBS in a different storage buffer formulation.



Immunofluorescent analysis of (4% PFA) fixed Raji cells using HLA class I ABC antibody (66013-1-Ig, Clone: 5C5B7) at dilution of 1:800 and Coralite®488-Conjugated AffiniPure Goat Anti-Mouse IgG(H+L). This data was developed using the same antibody clone with 66013-1-PBS in a different storage buffer formulation.