

For Research Use Only

GEFT Monoclonal antibody, PBS Only

Catalog Number: 66012-1-PBS



Basic Information

Catalog Number: 66012-1-PBS	GenBank Accession Number: BC012860	Purification Method: Protein A purification
Size: 1mg/ml	GeneID (NCBI): 115557	CloneNo.: 5A11F8
Source: Mouse	UNIPROT ID: Q86VW2	
Isotype: IgG2a	Full Name: RhoA/RAC/CDC42 exchange factor	
Immunogen Catalog Number: AG10819	Calculated MW: 64 kDa	
	Observed MW: 53 kDa, 63 kDa	

Applications

Tested Applications:
WB, IHC, IF/ICC, FC (Intra), Indirect ELISA

Species Specificity:
human, mouse, rat, pig, rabbit

Background Information

GEFT, also named as p63RhoGEF, may play a role in actin cytoskeleton reorganization in different tissues since its activation induces formation of actin stress fibers. It works as a guanine nucleotide exchange factor for Rho family of small GTPases. GETF links specifically G alpha q/11-coupled receptors to RHOA activation. GEFT may be an important regulator of processes involved in axon and dendrite formation. In neurons seems to be an exchange factor primarily for RAC1. It is involved in skeletal myogenesis. GEFT is expressed as three isoforms (64, 53 and 68kDa).

Storage

Storage:
Store at -80°C.
The product is shipped with ice packs. Upon receipt, store it immediately at -80°C

Storage Buffer:
PBS Only

For technical support and original validation data for this product please contact:

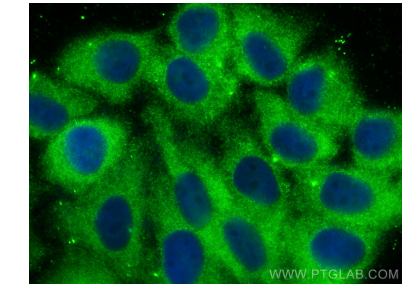
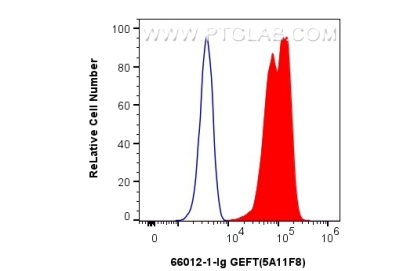
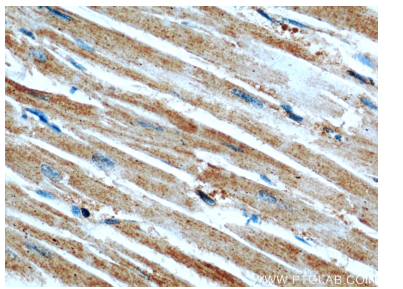
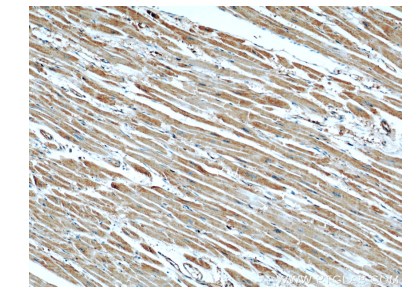
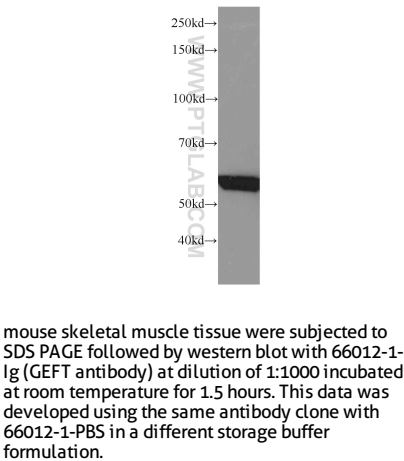
T: 4006900926

E: Proteintech-CN@ptglab.com

W: ptgcn.com

This product is exclusively available under Proteintech Group brand and is not available to purchase from any other manufacturer.

Selected Validation Data



1x10⁶ HEK-293 cells were intracellularly stained with 0.8 ug GEFT Monoclonal antibody (66012-1-Ig, Clone:5A11F8) and CoraLite®488-Conjugated AffiniPure Goat Anti-Mouse IgG(H+L) (SA00013-1)(red), or 0.8 ug Mouse IgG2a isotype control Mouse McAb (66360-2-Ig, Clone: 11A1B2) (blue). Cells were fixed with 4% PFA and permeabilized with Flow Cytometry Perm Buffer (PF00011-C). This data was developed using the same antibody clone with 66012-1-PBS in a

Immunofluorescent analysis of (-20°C Ethanol) fixed HepG2 cells using GEFT antibody (66012-1-Ig, Clone: 5A11F8) at dilution of 1:800 and CoraLite®488-Conjugated AffiniPure Goat Anti-Mouse IgG(H+L) (SA00013-1). This data was developed using the same antibody clone with 66012-1-PBS in a different storage buffer formulation.