

For Research Use Only

Anti-Mouse KLRG1 (2F1) Armenian Hamster Recombinant Antibody, PBS Only

Catalog Number: 65682-1-PBS



Basic Information

Catalog Number: 65682-1-PBS	GenBank Accession Number: BC101953	Purification Method: Protein A purification
Concentration: 1mg, 3 mg/ml	GeneID (NCBI): 50928	CloneNo.: 2F1
Source: Armenian Hamster	UNIPROT ID: O88713	
Isotype: IgG2a	Full Name: killer cell lectin-like receptor subfamily G, member 1	

Applications

Tested Applications:
FC

Species Specificity:
human, mouse

Background Information

KLRG1 (killer cell lectin-like receptor subfamily G, member 1) is a C-type lectin inhibitory receptor that contains an immunoreceptor tyrosine-based inhibitory motif (ITIM) in its cytoplasmic domain. KLRG1 is expressed by subsets of NK and T cells, existing both as a monomer and as a disulfide-linked homodimer (PMID: 10741410; 19604491). It is considered to be a cell differentiation marker for NK and T cells and is strongly induced by viral and other infections (PMID: 20373518). Through interactions with members of the cadherin family, KLRG1 plays an inhibitory role on NK- and T-cell function (PMID: 19009530; 20373518).

Storage

Storage:
Store at -80°C.
The product is shipped with ice packs. Upon receipt, store it immediately at -80°C
Storage Buffer:
PBS only, pH7.3

For technical support and original validation data for this product please contact:

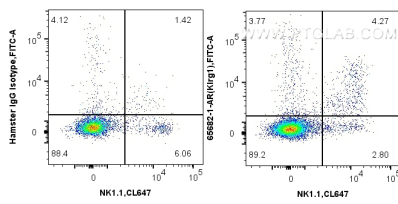
T: 4006900926

E: Proteintech-CN@ptglab.com

W: ptgcn.com

This product is exclusively available under Proteintech Group brand and is not available to purchase from any other manufacturer.

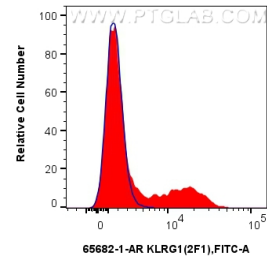
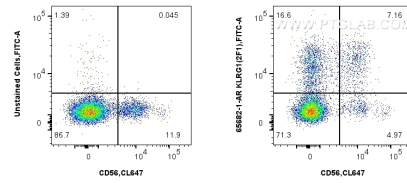
Selected Validation Data



1x10⁶ mouse splenocytes were surface stained with 0.25 ug Anti-Mouse KLRG1 (2F1) Armenian Hamster RecAb (65682-1-AR, Clone:2F1), or Armenian Hamster IgG Isotype Control (PIP) (65210-1-Ig, Clone: PIP) and FITC-conjugated Anti-Armenian Hamster IgG antibody. Cells were then stained with CoraLite® Plus 647 Anti-Mouse NK1.1 (CD161). Cells were not fixed. This data was developed using the same antibody clone with 65682-1-PBS in a



1x10⁶ human PBMCs were unstained or surface stained with 0.25 ug Anti-Mouse KLRG1 (2F1) Armenian Hamster RecAb (65682-1-AR, Clone:2F1), and FITC-conjugated Anti-Armenian Hamster IgG antibody. Cells were then stained with CoraLite® Plus 647 Anti-Human NCAM1/CD56 Rabbit Recombinant Antibody (CL647-98033, Clone: 240078A7). Cells were not fixed. Lymphocytes were gated. This data was developed using the same antibody



1x10⁶ human PBMCs were surface stained with 0.25 ug Anti-Mouse KLRG1 (2F1) Armenian Hamster RecAb (65682-1-AR, Clone: 2F1)(red) or unstained (blue), and FITC-conjugated Anti-Armenian Hamster IgG antibody. Cells were not fixed. Lymphocytes were gated. This data was developed using the same antibody clone with 65682-1-PBS in a different storage buffer formulation.