

For Research Use Only

Anti-Mouse KLRG1 (2F1) Armenian Hamster Recombinant Antibody

Catalog Number: 65682-1-AR



Basic Information

Catalog Number:

65682-1-AR

Concentration:

100ug, 1000 μ g/ml

Source:

Armenian Hamster

Isotype:

IgG2a

GenBank Accession Number:

BC101953

GeneID (NCBI):

50928

UNIPROT ID:

O88713

Full Name:

killer cell lectin-like receptor subfamily G, member 1

Purification Method:

Protein A purification

CloneNo.:

2F1

Recommended Dilutions:

FC: 0.25 ug per 10^6 cells in a 100 μ l suspension

Applications

Tested Applications:

FC

Species Specificity:

human, mouse

Positive Controls:

FC : mouse splenocytes, human PBMCs

Background Information

KLRG1 (killer cell lectin-like receptor subfamily G, member 1) is a C-type lectin inhibitory receptor that contains an immunoreceptor tyrosine-based inhibitory motif (ITIM) in its cytoplasmic domain. KLRG1 is expressed by subsets of NK and T cells, existing both as a monomer and as a disulfide-linked homodimer (PMID: 10741410; 19604491). It is considered to be a cell differentiation marker for NK and T cells and is strongly induced by viral and other infections (PMID: 20373518). Through interactions with members of the cadherin family, KLRG1 plays an inhibitory role on NK- and T-cell function (PMID: 19009530; 20373518).

Storage

Storage:

Store at 2-8°C. Stable for one year after shipment.

Storage Buffer:

PBS with 0.09% sodium azide, pH7.3

For technical support and original validation data for this product please contact:

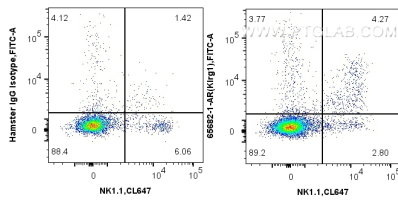
T: 4006900926

E: Proteintech-CN@ptglab.com

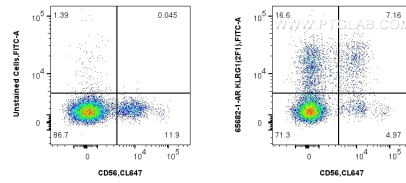
W: ptgcn.com

This product is exclusively available under Proteintech Group brand and is not available to purchase from any other manufacturer.

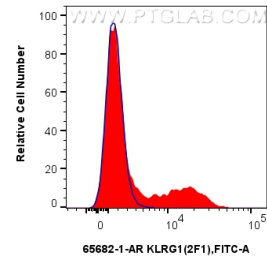
Selected Validation Data



1x10⁶ mouse splenocytes were surface stained with 0.25 ug Anti-Mouse KLRG1 (2F1) Armenian Hamster RecAb (65682-1-AR, Clone:2F1), or Armenian Hamster IgG (65210-1-Ig, Clone: PIP) and FITC-conjugated Anti-Armenian Hamster IgG antibody. Cells were then stained with CoralLite® Plus 647 Anti-Mouse NK1.1 (CD161). Cells were not fixed.



1x10⁶ human PBMCs were unstained or surface stained with 0.25 ug Anti-Mouse KLRG1 (2F1) Armenian Hamster RecAb (65682-1-AR, Clone:2F1), and FITC-conjugated Anti-Armenian Hamster IgG antibody. Cells were then stained with CoralLite® Plus 647 Anti-Human NCAM1/CD56 Rabbit Recombinant Antibody (CL647-98033, Clone: 240078A7). Cells were not fixed. Lymphocytes were gated.



1x10⁶ human PBMCs were surface stained with 0.25 ug Anti-Mouse KLRG1 (2F1) Armenian Hamster RecAb (65682-1-AR, Clone: 2F1)(red) or unstained (blue), and FITC-conjugated Anti-Armenian Hamster IgG antibody. Cells were not fixed. Lymphocytes were gated.