

For Research Use Only

# Anti-Mouse CD11b (M1/70) Rat IgG2a Recombinant Antibody, PBS Only

Catalog Number: 65672-1-PBS



## Basic Information

Catalog Number:

65672-1-PBS

Concentration:

1mg, 2 mg/ml

Source:

Rat

Isotype:

IgG2a

GenBank Accession Number:

BC156991

GeneID (NCBI):

16409

Full Name:

integrin alpha M

Calculated MW:

127 kDa

Purification Method:

Protein A purification

CloneNo.:

M1/70

## Applications

Tested Applications:

FC

Species Specificity:

human, mouse

## Background Information

Integrins are cell adhesion receptors that are heterodimers composed of non-covalently associated  $\alpha$  and  $\beta$  subunits (PMID: 9779984). CD11b, also known as Integrin alpha M or CR3A, belongs to the integrin alpha chain family. CD11b forms an  $\alpha / \beta$  heterodimer with CD18 (integrin  $\beta$  2). CD11b/CD18 is implicated in various adhesive interactions of monocytes, macrophages and granulocytes as well as in mediating the uptake of complement-coated particles and pathogens (PMID: 9558116; 20008295). CD11b/CD18 is a receptor for the complement protein fragment iC3b, and is also a receptor for fibrinogen, factor X and ICAM1 (PMID: 2971974; 15485828).

## Storage

Storage:

Store at -80°C.

The product is shipped with ice packs. Upon receipt, store it immediately at -80°C

Storage Buffer:

PBS only, pH7.3

For technical support and original validation data for this product please contact:

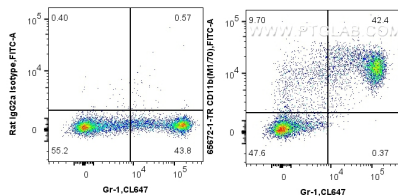
T: 4006900926

E: Proteintech-CN@ptglab.com

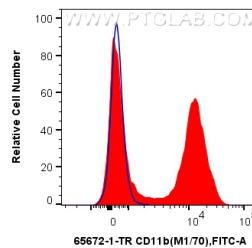
W: ptgcn.com

This product is exclusively available under Proteintech Group brand and is not available to purchase from any other manufacturer.

## Selected Validation Data



1x10<sup>6</sup> mouse bone marrow cells were surface stained with 0.5 ug Anti-Mouse CD11b (M1/70) Rat IgG2a RecAb (65672-1-TR, Clone: M1/70) or Rat IgG2a Isotype Control Recombinant Antibody (98427-1-TR, Clone: 250862A1), and FITC anti-Rat IgG2a antibody. Cells were co-stained with CoraLite® Plus 647 Anti-Mouse Ly-6G (CL647-98284: 242141B11). Cells were not fixed. This data was developed using the same antibody clone with 65672-1-PBS in a different storage buffer



1x10<sup>6</sup> mouse bone marrow cells were surface stained with 0.5 ug Anti-Mouse CD11b (M1/70) Rat IgG2a RecAb (65672-1-TR, Clone: M1/70) (red) or Rat IgG2a Isotype Control Recombinant Antibody (98427-1-TR, Clone: 250862A1) (blue), and FITC anti-Rat IgG2a antibody. Cells were not fixed. This data was developed using the same antibody clone with 65672-1-PBS in a different storage buffer formulation.