

For Research Use Only

Anti-Mouse Ly-6C (HK1.4) Rat IgG2a Recombinant Antibody, PBS Only

Catalog Number: 65669-1-PBS



Basic Information

Catalog Number:

65669-1-PBS

Concentration:

1mg, 2 mg/ml

Source:

Rat

Isotype:

IgG2a

GenBank Accession Number:

BC010764

GeneID (NCBI):

17067

Full Name:

Lymphocyte antigen 6 complex, locus

C1

Purification Method:

Protein A purification

CloneNo.:

HK1.4

Applications

Tested Applications:

FC

Species Specificity:

mouse

Background Information

Ly-6C (lymphocyte antigen 6 complex, locus C) is a 14-17 kDa GPI-linked cell surface antigen that belongs to the Ly-6 family of glycosyl phosphatidylinositol-anchored surface glycoproteins (PMID: 9192663). Ly-6C is expressed on mouse monocytes/macrophages, endothelial cells, granulocytes, thymocytes, and some T cell subsets (PMID: 2849552). The two alleles of Ly-6C, Ly-6C.1 and Ly-6C.2, result in differential expression of this protein on subpopulations of CD4+ T cells (PMID: 15057973; 9126982). Ly-6C has been reported as a marker of memory CD8+ T cells (PMID: 7543536).

Storage

Storage:

Store at -80°C.

The product is shipped with ice packs. Upon receipt, store it immediately at -80°C

Storage Buffer:

PBS only, pH7.3

For technical support and original validation data for this product please contact:

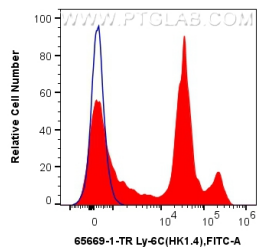
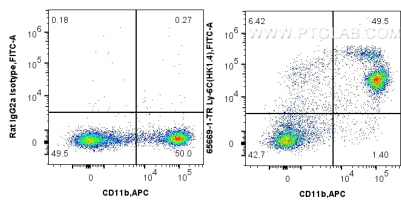
T: 4006900926

E: Proteintech-CN@ptglab.com

W: ptgcn.com

This product is exclusively available under Proteintech Group brand and is not available to purchase from any other manufacturer.

Selected Validation Data



1x10⁶ mouse bone marrow cells were surface stained with 0.5 ug Anti-Mouse Ly-6C (HK1.4) Rat IgG2a RecAb (65669-1-TR, Clone: HK1.4) or Rat IgG2a Isotype Control Recombinant Antibody (98427-1-TR, Clone: 250862A1), and FITC anti-Rat IgG2a antibody. Cells were then stained with APC Anti-Mouse CD11b (M1/70) (APC-65055, Clone: M1/70). Cells were not fixed. This data was developed using the same antibody clone with 65669-1-PBS in a different storage buffer formulation.

1x10⁶ mouse bone marrow cells were surface stained with 0.5 ug Anti-Mouse Ly-6C (HK1.4) Rat IgG2a RecAb (65669-1-TR, Clone: HK1.4) (red) or Rat IgG2a Isotype Control Recombinant Antibody (98427-1-TR, Clone: 250862A1) (blue), and FITC anti-Rat IgG2a antibody. Cells were not fixed. This data was developed using the same antibody clone with 65669-1-PBS in a different storage buffer formulation.