

For Research Use Only

# Anti-Mouse CD4 (GK1.5) Rat IgG2a Recombinant Antibody, PBS Only

Catalog Number: 65662-1-PBS



## Basic Information

Catalog Number:

65662-1-PBS

Concentration:

1mg, 2 mg/ml

Source:

Rat

Isotype:

IgG2a

GenBank Accession Number:

BC039137

GeneID (NCBI):

12504

Full Name:

CD4 antigen

Purification Method:

Protein A purification

CloneNo.:

GK1.5

## Applications

Tested Applications:

FC

Species Specificity:

mouse

## Background Information

CD4 is a 55-kDa transmembrane glycoprotein expressed on T helper cells, majority of thymocytes, monocytes, macrophages, and dendritic cells (PMID: 9304802; 12213222). CD4 is an accessory protein for MHC class-II antigen/T-cell receptor interaction. It plays an important role in T helper cell development and activation (PMID: 9539765; 3112582). CD4 serves as a receptor for the human immunodeficiency virus (HIV) (PMID: 9304802).

## Storage

Storage:

Store at -80°C.

**The product is shipped with ice packs. Upon receipt, store it immediately at -80°C**

Storage Buffer:

PBS only, pH7.3

For technical support and original validation data for this product please contact:

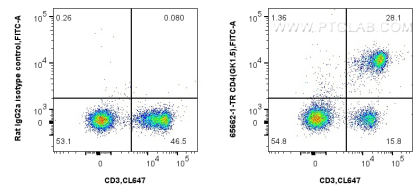
T: 4006900926

E: [Proteintech-CN@ptglab.com](mailto:Proteintech-CN@ptglab.com)

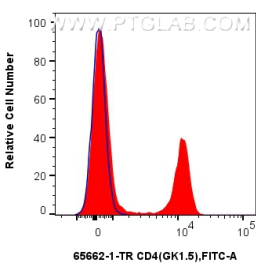
W: [ptgcn.com](http://ptgcn.com)

**This product is exclusively available under Proteintech Group brand and is not available to purchase from any other manufacturer.**

Selected Validation Data



1x10<sup>6</sup> mouse splenocytes were surface stained with 0.5 ug Anti-Mouse CD4 (GK1.5) Rat IgG2a RecAb (65662-1-TR, Clone: GK1.5) or Rat IgG2a Isotype Control (2A3) (65209-1-Ig, Clone: 2A3), and FITC anti-Rat IgG2a antibody. Cells were then stained with CoraLite® Plus 647 Anti-Mouse CD3 ε (145-2C11) (CL647-65060, Clone: 145-2C11). Cells were not fixed. This data was developed using the same antibody clone with 65662-1-PBS in a different storage buffer formulation.



1x10<sup>6</sup> mouse splenocytes were surface stained with 0.5 ug Anti-Mouse CD4 (GK1.5) Rat IgG2a RecAb (65662-1-TR, Clone: GK1.5) (red) or Rat IgG2a Isotype Control (2A3) (65209-1-Ig, Clone: 2A3) (blue), and FITC anti-Rat IgG2a antibody. Cells were not fixed. This data was developed using the same antibody clone with 65662-1-PBS in a different storage buffer formulation.