

For Research Use Only

Anti-Human CD314/NKG2D (1D11) Mouse IgG2a Recombinant Antibody

Catalog Number: 65643-1-MR



Basic Information

Catalog Number:

65643-1-MR

Size:

100ug, 1 mg/ml

Source:

Mouse

Isotype:

IgG2a

GenBank Accession Number:

BC039836

GeneID (NCBI):

22914

Full Name:

killer cell lectin-like receptor

subfamily K, member 1

Calculated MW:

25 kDa

Purification Method:

Protein A purification

CloneNo.:

1D11

Applications

Tested Applications:

FC

Species Specificity:

human

Background Information

CD314, also known as NKG2D or Killer cell lectin-like receptor subfamily K member 1 (KLRK1), is a type II lectin-like transmembrane stimulatory receptor (PMID: 8436421). In humans, it is expressed on NK cells, gamma delta T cells, and CD8+ alpha beta T cells (PMID: 10426993). Various families of cell surface ligands have been identified, including the MICA/MICB and ULBP proteins (PMID: 12150888). CD314 is involved in both innate and adaptive immunities, and the NKG2D/NKG2DL pathway involves multiple effector cell types for controlling tumor progression (PMID: 31720075).

Storage

Storage:

Store at 2-8°C. Stable for one year after shipment.

Storage Buffer:

PBS with 0.09% sodium azide.

For technical support and original validation data for this product please contact:

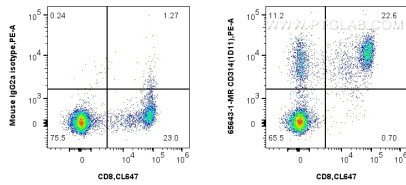
T: 4006900926

E: Proteintech-CN@ptglab.com

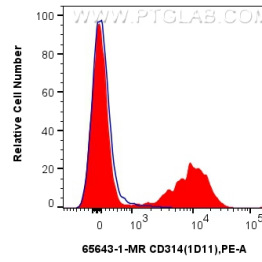
W: ptgcn.com

This product is exclusively available under Proteintech Group brand and is not available to purchase from any other manufacturer.

Selected Validation Data



1x10⁶ human PBMCs were surface stained with 0.25 ug Anti-Human CD314/NKG2D (1D11) Mouse IgG2a Recombinant Antibody (65643-1-MR, Clone:1D11) or Mouse IgG2a Isotype Control, and PE-conjugated Goat Anti-Mouse IgG. Cells were co-stained with CoraLite® Plus 647 Anti-Human CD8 (UCHT4) Mouse IgG2a Recombinant Antibody. Cells were not fixed. Lymphocytes were gated.



1x10⁶ human PBMCs were surface stained with 0.25 ug Anti-Human CD314/NKG2D (1D11) Mouse IgG2a Recombinant Antibody (65643-1-MR, Clone:1D11) (red) or Mouse IgG2a Isotype Control (blue), and PE-conjugated Goat Anti-Mouse IgG. Cells were not fixed. Lymphocytes were gated.