

For Research Use Only

Anti-Human CD25/IL-2RA (BC96) Mouse IgG2a Recombinant Antibody, PBS Only

Catalog Number: 65620-1-PBS



Basic Information

Catalog Number:

65620-1-PBS

Concentration:

1mg, 2 mg/ml

Source:

Mouse

Isotype:

IgG2a

GenBank Accession Number:

BC156627

GeneID (NCBI):

3559

Full Name:

interleukin 2 receptor, alpha

Calculated MW:

272 aa, 31 kDa

Purification Method:

Protein A purification

CloneNo.:

BC96

Applications

Tested Applications:

FC

Species Specificity:

human

Background Information

Proliferation of T lymphocytes is triggered by the interaction of IL-2 with its specific receptor following T lymphocyte activation. The receptor for IL-2 has three forms, generated by different combinations of three different proteins, the alpha chain (IL-2R alpha), the beta chain (IL-2R beta), and the gamma chain (IL-2R gamma) (PMID: 8476561). IL-2R alpha (also known as CD25) is a type I transmembrane protein present on activated T cells, activated B cells, some thymocytes, myeloid precursors, and oligodendrocytes. CD25 is also found on natural CD4⁺Foxp3⁺ Treg cells and a subset of human CD4⁺ memory T cells (PMID: 22585674).

Storage

Storage:

Store at -80°C.

The product is shipped with ice packs. Upon receipt, store it immediately at -80°C

Storage Buffer:

PBS only, pH7.3

For technical support and original validation data for this product please contact:

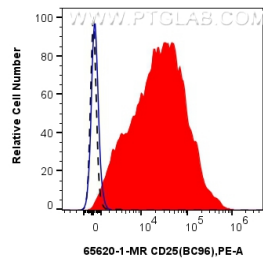
T: 4006900926

E: Proteintech-CN@ptglab.com

W: ptgcn.com

This product is exclusively available under Proteintech Group brand and is not available to purchase from any other manufacturer.

Selected Validation Data



1x10⁶ PHA treated human PBMCs were surface stained with 0.25 ug Anti-Human CD25 (BC96) Mouse IgG2a Recombinant Antibody (65620-1-MR, Clone: BC96) (red) or Mouse IgG2a Isotype Control (blue), and PE-conjugated Goat Anti-Mouse IgG. 1x10⁶ untreated human PBMCs were surface stained with 0.25 ug Anti-Human CD25 (BC96) Mouse IgG2a Recombinant Antibody (65620-1-MR, Clone: BC96) and PE-conjugated Goat Anti-Mouse IgG (black, dashed). Cells were not

