

For Research Use Only

# Anti-Human CD5 (UCHT2) Mouse IgG2a Recombinant Antibody

Catalog Number: 65609-1-MR



## Basic Information

Catalog Number:

65609-1-MR

Size:

100ug, 1000 ug/ml

Source:

Mouse

Isotype:

IgG2a

GenBank Accession Number:

BC027901

GeneID (NCBI):

921

ENSEMBL Gene ID:

ENSG00000110448

Full Name:

CD5 molecule

Calculated MW:

495 aa, 55 kDa

Purification Method:

Protein A purification

CloneNo.:

UCHT2

## Applications

Tested Applications:

FC

Species Specificity:

human

## Background Information

CD5 is a type I transmembrane glycoprotein of the scavenger receptor cysteine-rich family (PMID: 12403363). CD5 is expressed on a majority of thymocytes, mature T cells, B cell subsets, and peripheral blood dendritic cells (PMID: 9858516; 6156984; 10379049; 1384337). CD5 may act as a receptor in regulating T-cell proliferation. It functions as a negative regulator of TCR signaling during thymocyte development (PMID: 7542801).

## Storage

Storage:

Store at 2-8°C. Stable for one year after shipment.

Storage Buffer:

PBS with 0.09% sodium azide.

For technical support and original validation data for this product please contact:

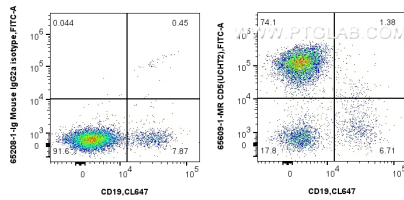
T: 4006900926

E: [Proteintech-CN@ptglab.com](mailto:Proteintech-CN@ptglab.com)

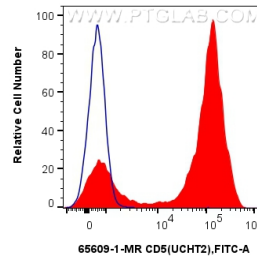
W: [ptgcn.com](http://ptgcn.com)

This product is exclusively available under Proteintech Group brand and is not available to purchase from any other manufacturer.

## Selected Validation Data



1x10<sup>6</sup> human PBMCs were surface stained with 0.25 ug Anti-Human CD5 Mouse IgG2a Recombinant Antibody (65609-1-MR, Clone: UCHT2) or Mouse IgG2a Isotype Control (65208-1-Ig, Clone: C1.18.4) and CoraLite® 488-Conjugated AffiniPure Donkey Anti-Mouse IgG(H+L). Cells were then stained with CoraLite® Plus 647 Anti-Human CD19. Cells were not fixed. Lymphocytes were gated.



1x10<sup>6</sup> human PBMCs were surface stained with 0.25 ug Anti-Human CD5 Mouse IgG2a Recombinant Antibody (65609-1-MR, Clone: UCHT2) (red) or Mouse IgG2a Isotype Control (65208-1-Ig, Clone: C1.18.4) (blue) and CoraLite® 488-Conjugated AffiniPure Donkey Anti-Mouse IgG(H+L). Cells were not fixed. Lymphocytes were gated.