

For Research Use Only



Anti-Human Integrin Beta 1/CD29 (TS2/16) Mouse IgG2a Recombinant Antibody, PBS Only

Catalog Number: 65601-1-PBS

Basic Information

Catalog Number: 65601-1-PBS	GenBank Accession Number: BC020057	Purification Method: Protein A purification
Concentration: 1mg, 2 mg/ml	GeneID (NCBI): 3688	CloneNo.: TS2/16
Source: Mouse	ENSEMBL Gene ID: ENSG00000150093	
Isotype: IgG2a	UNIPROT ID: P05556	
	Full Name: integrin, beta 1 (fibronectin receptor, beta polypeptide, antigen CD29 includes MDF2, MSK12)	
	Calculated MW: 88 kDa	

Applications

Tested Applications:
FC

Species Specificity:
human, monkey, non-human primates

Background Information

Integrin beta-1 (ITGB1), also named as CD29, is a 130 kDa single chain type I glycoprotein that is expressed in a heterodimeric complex with one of six distinct α subunits, comprising the very late activation antigen (VLA) subfamily of adhesion receptors. It is one of the essential surface molecules expressed on human MSC from bone marrow and other sources. The β 1 subunit is also broadly expressed on lymphocytes and monocytes, weakly expressed on granulocytes, and not expressed on erythrocytes. These receptors are involved in a variety of cell-cell and cell-matrix interactions.

Storage

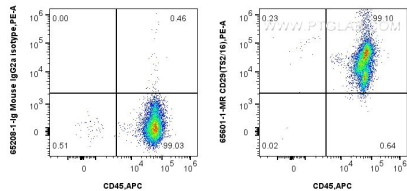
Storage:
Store at -80°C.
The product is shipped with ice packs. Upon receipt, store it immediately at -80°C

Storage Buffer:
PBS only, pH7.3

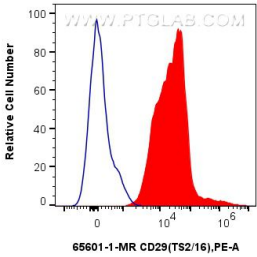
For technical support and original validation data for this product please contact:
T: 4006900926 E: Proteintech-CN@ptglab.com W: ptgcn.com

This product is exclusively available under Proteintech Group brand and is not available to purchase from any other manufacturer.

Selected Validation Data



1x10⁶ human PBMCs were surface stained with 0.25 ug Anti-Human CD29 (TS2/16) Mouse IgG2a RecAb (65601-1-MR, Clone: TS2/16) or 0.25 ug Mouse IgG2a Isotype Control (C1.18.4) (65208-1-Ig, Clone: C1.18.4), and PE-conjugated Goat Anti-Mouse IgG. Cells were then stained with APC Anti-Human CD45. Cells were incubated with FC Receptor Block prior to staining. Cells were not fixed. This data was developed using the same antibody clone with 65601-1-PBS in a



1x10⁶ human PBMCs were surface stained with 0.25 ug Anti-Human CD29 (TS2/16) Mouse IgG2a RecAb (65601-1-MR, Clone: TS2/16) (red) or 0.25 ug Mouse IgG2a Isotype Control (C1.18.4) (65208-1-Ig, Clone: C1.18.4) (blue), and PE-conjugated Goat Anti-Mouse IgG. Cells were incubated with FC Receptor Block prior to staining. Cells were not fixed. This data was developed using the same antibody clone with 65601-1-PBS in a different storage buffer formulation.

