

For Research Use Only

Anti-Human CD29 (TS2/16) Mouse IgG2a Recombinant Antibody

Catalog Number: 65601-1-MR



Basic Information

Catalog Number:

65601-1-MR

Size:

100ug, 1000 ug/ml

Source:

Mouse

Isotype:

IgG2a

GenBank Accession Number:

BC020057

GeneID (NCBI):

3688

ENSEMBL Gene ID:

ENSG00000150093

Full Name:

integrin, beta 1 (fibronectin receptor, beta polypeptide, antigen CD29 includes MDF2, MSK12)

Calculated MW:

88 kDa

Purification Method:

Protein A purification

CloneNo.:

TS2/16

Applications

Tested Applications:

FC

Species Specificity:

human

Background Information

Integrin beta-1 (ITGB1), also named as CD29, is a 130 kDa single chain type I glycoprotein that is expressed in a heterodimeric complex with one of six distinct α subunits, comprising the very late activation antigen (VLA) subfamily of adhesion receptors. It is one of the essential surface molecules expressed on human MSC from bone marrow and other sources. The β 1 subunit is also broadly expressed on lymphocytes and monocytes, weakly expressed on granulocytes, and not expressed on erythrocytes. These receptors are involved in a variety of cell-cell and cell-matrix interactions.

Storage

Storage:

Store at 2-8°C. Stable for one year after shipment.

Storage Buffer:

PBS with 0.09% sodium azide.

For technical support and original validation data for this product please contact:

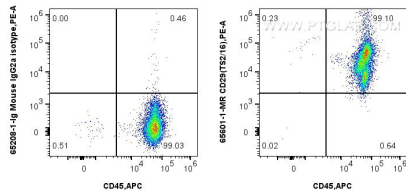
T: 4006900926

E: Proteintech-CN@ptglab.com

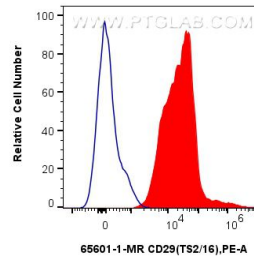
W: ptgcn.com

This product is exclusively available under Proteintech Group brand and is not available to purchase from any other manufacturer.

Selected Validation Data



1x10⁶ human PBMCs were surface stained with 0.25 ug Anti-Human CD29 (TS2/16) Mouse IgG2a RecAb (65601-1-MR, Clone: TS2/16) or 0.25 ug Mouse IgG2a Isotype Control (C1.18.4) (65208-1-Ig, Clone: C1.18.4), and PE-conjugated Goat Anti-Mouse IgG. Cells were then stained with APC Anti-Human CD45. Cells were incubated with FC Receptor Block prior to staining. Cells were not fixed.



1x10⁶ human PBMCs were surface stained with 0.25 ug Anti-Human CD29 (TS2/16) Mouse IgG2a RecAb (65601-1-MR, Clone: TS2/16) (red) or 0.25 ug Mouse IgG2a Isotype Control (C1.18.4) (65208-1-Ig, Clone: C1.18.4) (blue), and PE-conjugated Goat Anti-Mouse IgG. Cells were incubated with FC Receptor Block prior to staining. Cells were not fixed.