

For Research Use Only

# Anti-Human CD86 (BU63) Mouse IgG2a Recombinant Antibody, PBS Only

Catalog Number: 65592-1-PBS



## Basic Information

<b>Catalog Number:</b> 65592-1-PBS	<b>GenBank Accession Number:</b> BC040261	<b>Purification Method:</b> Protein A purification
<b>Concentration:</b> 1mg, 2 mg/ml	<b>GeneID (NCBI):</b> 942	<b>CloneNo.:</b> BU63
<b>Source:</b> Mouse	<b>ENSEMBL Gene ID:</b> ENSG00000114013	
<b>Isotype:</b> IgG2a	<b>Full Name:</b> CD86 molecule	
	<b>Calculated MW:</b> 329 aa, 38 kDa	

## Applications

**Tested Applications:**  
FC

**Species Specificity:**  
human

## Background Information

CD86 (also known as B7.2) is a costimulatory molecule belonging to the immunoglobulin superfamily. Primarily expressed on antigen-presenting cells (APCs), including B cells, dendritic cells, and macrophages, CD86 is the ligand for two proteins at the cell surface of T cells, CD28 antigen and cytotoxic T-lymphocyte-associated protein 4. Binding of CD86 with CD28 antigen is a costimulatory signal for activation of the T-cell. Binding of CD86 with cytotoxic T-lymphocyte-associated protein 4 negatively regulates T-cell activation and diminishes the immune response.

## Storage

**Storage:**  
Store at -80°C.  
**The product is shipped with ice packs. Upon receipt, store it immediately at -80°C**

**Storage Buffer:**  
PBS Only

For technical support and original validation data for this product please contact:

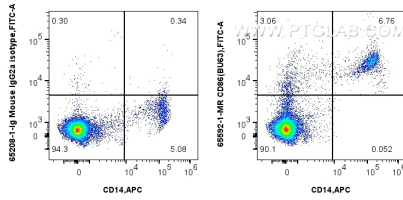
T: 4006900926

E: [Proteintech-CN@ptglab.com](mailto:Proteintech-CN@ptglab.com)

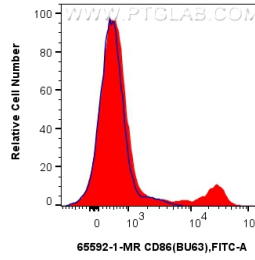
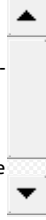
W: [ptgcn.com](http://ptgcn.com)

**This product is exclusively available under Proteintech Group brand and is not available to purchase from any other manufacturer.**

## Selected Validation Data



1x10<sup>6</sup> human PBMCs were surface stained with 0.25 ug Anti-Human CD86 Mouse IgG2a Recombinant Antibody (65592-1-MR, Clone: BU63) or Mouse IgG2a Isotype Control (65208-1-Ig, Clone: C1.18.4) and CoraLite®488-Conjugated AffiniPure Donkey Anti-Mouse IgG(H+L). Cells were then stained with APC Anti-Human CD14. Cells were incubated with FC Receptor Block prior to staining. Cells were not fixed. This data was developed using the same antibody clone with 65592-1-PBS in a



1x10<sup>6</sup> human PBMCs were surface stained with 0.25 ug Anti-Human CD86 Mouse IgG2a Recombinant Antibody (65592-1-MR, Clone:BU63) (red) or Mouse IgG2a Isotype Control (65208-1-Ig, Clone: C1.18.4) (blue) and CoraLite®488-Conjugated AffiniPure Donkey Anti-Mouse IgG(H+L). Cells were incubated with FC Receptor Block prior to staining. Cells were not fixed. This data was developed using the same antibody clone with 65592-1-PBS in a different storage buffer

