

For Research Use Only



# Anti-Human CD21 (BU32) Mouse IgG2a Recombinant Antibody

Catalog Number: 65591-1-MR

## Basic Information

<b>Catalog Number:</b> 65591-1-MR	<b>GenBank Accession Number:</b> BC136394	<b>Purification Method:</b> Protein A purification
<b>Size:</b> 100ug, 1 mg/ml	<b>GeneID (NCBI):</b> 1380	<b>CloneNo.:</b> BU32
<b>Source:</b> Mouse	<b>ENSEMBL Gene ID:</b> ENSG00000117322	
<b>Isotype:</b> IgG2a	<b>Full Name:</b> complement component (3d/Epstein Barr virus) receptor 2	
	<b>Calculated MW:</b> 1092 aa, 119 kDa	

## Applications

**Tested Applications:**  
FC

**Species Specificity:**  
Human

## Background Information

CD21, also known as complement receptor type 2 (CR2), complement C3d receptor, and Epstein-Barr virus receptor, is a transmembrane protein that contains a small cytoplasmic domain, a transmembrane region and an extracellular domain consisting of 15 tandem short consensus repeat sequences (PMID: 6230668; 2551147). It is expressed on B cells, follicular dendritic cells, thymocytes and a subset of peripheral T cells (PMID: 26119182). CD21 binds complement fragments C3d, C3dg and iC3b and acts as a receptor for the Epstein-Barr virus (PMID: 7753047). On B cells, together with CD19 and CD81, CD21 forms a complex that functions as a co-receptor to the BCR (PMID: 7542009). It is involved in B cells activation and functions.

## Storage

**Storage:**  
Store at 2-8°C. Stable for one year after shipment.

**Storage Buffer:**  
PBS with 0.09% sodium azide.

For technical support and original validation data for this product please contact:

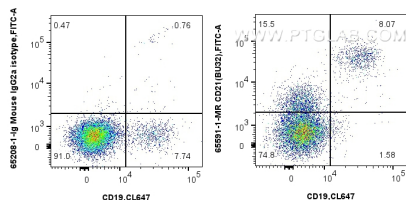
T: 4006900926

E: [Proteintech-CN@ptglab.com](mailto:Proteintech-CN@ptglab.com)

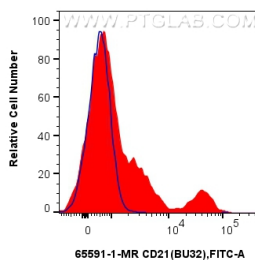
W: [ptgcn.com](http://ptgcn.com)

This product is exclusively available under Proteintech Group brand and is not available to purchase from any other manufacturer.

## Selected Validation Data



1x10<sup>6</sup> human PBMCs were surface stained with 0.25 ug Anti-Human CD21 Mouse IgG2a Recombinant Antibody (65591-1-MR, Clone: BU32) or Mouse IgG2a Isotype Control (65208-1-Ig, Clone: C1.18.4) and CoraLite® 488-Conjugated AffiniPure Donkey Anti-Mouse IgG(H+L). Cells were then stained with CoraLite® Plus 647 Anti-Human CD19. Cells were not fixed. Lymphocytes were gated.



1x10<sup>6</sup> human PBMCs were surface stained with 0.25 ug Anti-Human CD21 Mouse IgG2a Recombinant Antibody (65591-1-MR, Clone: BU32) (red) or Mouse IgG2a Isotype Control (65208-1-Ig, Clone: C1.18.4) (blue) and CoraLite® 488-Conjugated AffiniPure Donkey Anti-Mouse IgG(H+L). Cells were not fixed. Lymphocytes were gated.