

For Research Use Only

Anti-Human PD-1/CD279 (EH12.2H7) Mouse IgG2a Recombinant Antibody, PBS Only

Catalog Number: 65586-1-PBS



Basic Information

Catalog Number:	GenBank Accession Number:	Purification Method:
65586-1-PBS	BC074740	Protein A purification
Concentration:	GeneID (NCBI):	CloneNo.:
1mg, 2mg/ml	5133	EH12.2H7
Source:	Full Name:	
Mouse	programmed cell death 1	
Isotype:	Calculated MW:	
IgG2a	288 aa, 32 kDa	

Applications

Tested Applications:
FC
Species Specificity:
human

Background Information

Programmed cell death 1 (PD-1, also known as CD279) is an immunoinhibitory receptor that belongs to the CD28/CTLA-4 subfamily of the Ig superfamily. It is a 288 amino acid (aa) type I transmembrane protein composed of one Ig superfamily domain, a stalk, a transmembrane domain, and an intracellular domain containing an immunoreceptor tyrosine-based inhibitory motif (ITIM) as well as an immunoreceptor tyrosine-based switch motif (ITSM) (PMID: 18173375). PD-1 is expressed during thymic development and is induced in a variety of hematopoietic cells in the periphery by antigen receptor signaling and cytokines (PMID: 20636820). Engagement of PD-1 by its ligands PD-L1 or PD-L2 transduces a signal that inhibits T-cell proliferation, cytokine production, and cytolytic function (PMID: 19426218). It is critical for the regulation of T cell function during immunity and tolerance. Blockade of PD-1 can overcome immune resistance and also has been shown to have antitumor activity (PMID: 22658127; 23169436).

Storage

Storage:
Store at -80°C.
The product is shipped with ice packs. Upon receipt, store it immediately at -80°C
Storage Buffer:
PBS Only

For technical support and original validation data for this product please contact:

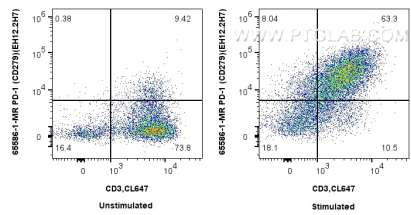
T: 4006900926

E: Proteintech-CN@ptglab.com

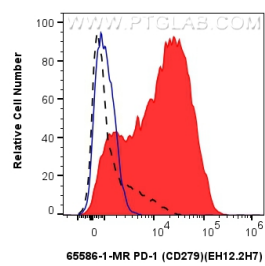
W: ptgcn.com

This product is exclusively available under Proteintech Group brand and is not available to purchase from any other manufacturer.

Selected Validation Data



1x10⁶ unstimulated or PHA stimulated human PBMCs were surface stained with 0.25 ug Anti-Human PD-1 (CD279) Mouse IgG2a Recombinant Antibody (65586-1-MR, Clone: EH12.2H7) and CoraLite® 488-Conjugated AffiniPure Donkey Anti-Mouse IgG(H+L). Cells were then stained with CoraLite® Plus 647 Anti-Human CD3. Cells were not fixed. This data was developed using the same antibody clone with 65586-1-PBS in a different storage buffer formulation.



1x10⁶ unstimulated (black) or PHA stimulated human PBMCs (red) were surface stained with 0.25 ug Anti-Human PD-1 (CD279) Mouse IgG2a Recombinant Antibody (65586-1-MR, Clone: EH12.2H7) and CoraLite® 488-Conjugated AffiniPure Donkey Anti-Mouse IgG(H+L). 1x10⁶ PHA treated human PBMCs were surface stained with Mouse IgG2a Isotype Control (65208-1-Ig, Clone: C1.18.4) and CoraLite® 488-Conjugated AffiniPure Donkey Anti-Mouse