

For Research Use Only

# Anti-Human PD-1/CD279 (EH12.2H7) Mouse IgG2a Recombinant Antibody

Catalog Number: 65586-1-MR



## Basic Information

<b>Catalog Number:</b> 65586-1-MR	<b>GenBank Accession Number:</b> BC074740	<b>Purification Method:</b> Protein A purification
<b>Concentration:</b> 100ug, 1000 ug/ml	<b>GeneID (NCBI):</b> 5133	<b>CloneNo.:</b> EH12.2H7
<b>Source:</b> Mouse	<b>Full Name:</b> programmed cell death 1	
<b>Isotype:</b> IgG2a	<b>Calculated MW:</b> 288 aa, 32 kDa	

## Applications

**Tested Applications:**  
FC

**Species Specificity:**  
human

## Background Information

Programmed cell death 1 (PD-1, also known as CD279) is an immunoinhibitory receptor that belongs to the CD28/CTLA-4 subfamily of the Ig superfamily. It is a 288 amino acid (aa) type I transmembrane protein composed of one Ig superfamily domain, a stalk, a transmembrane domain, and an intracellular domain containing an immunoreceptor tyrosine-based inhibitory motif (ITIM) as well as an immunoreceptor tyrosine-based switch motif (ITSM) (PMID: 18173375). PD-1 is expressed during thymic development and is induced in a variety of hematopoietic cells in the periphery by antigen receptor signaling and cytokines (PMID: 20636820). Engagement of PD-1 by its ligands PD-L1 or PD-L2 transduces a signal that inhibits T-cell proliferation, cytokine production, and cytolytic function (PMID: 19426218). It is critical for the regulation of T cell function during immunity and tolerance. Blockade of PD-1 can overcome immune resistance and also has been shown to have antitumor activity (PMID: 22658127; 23169436).

## Storage

**Storage:**  
Store at 2-8°C. Stable for one year after shipment.

**Storage Buffer:**  
PBS with 0.09% sodium azide.

For technical support and original validation data for this product please contact:

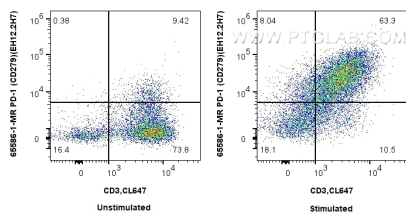
T: 4006900926

E: [Proteintech-CN@ptglab.com](mailto:Proteintech-CN@ptglab.com)

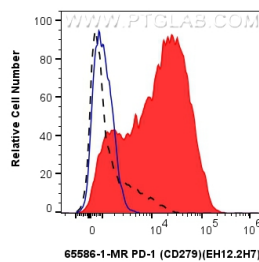
W: [ptgcn.com](http://ptgcn.com)

This product is exclusively available under Proteintech Group brand and is not available to purchase from any other manufacturer.

## Selected Validation Data



1x10<sup>6</sup> unstimulated or PHA stimulated human PBMCs were surface stained with 0.25 ug Anti-Human PD-1 (CD279) Mouse IgG2a Recombinant Antibody (65586-1-MR, Clone: EH12.2H7) and CoraLite®488-Conjugated AffiniPure Donkey Anti-Mouse IgG(H+L). Cells were then stained with CoraLite® Plus 647 Anti-Human CD3. Cells were not fixed.



1x10<sup>6</sup> unstimulated (black) or PHA stimulated human PBMCs (red) were surface stained with 0.25 ug Anti-Human PD-1 (CD279) Mouse IgG2a Recombinant Antibody (65586-1-MR, Clone: EH12.2H7) and CoraLite®488-Conjugated AffiniPure Donkey Anti-Mouse IgG(H+L). 1x10<sup>6</sup> PHA treated human PBMCs were surface stained with Mouse IgG2a Isotype Control (65208-1-Ig, Clone: C1.18.4) and CoraLite®488-Conjugated AffiniPure Donkey Anti-Mouse

