

For Research Use Only

# Anti-Human CD11c (3.9) Mouse IgG2a Recombinant Antibody, PBS Only

Catalog Number: 65568-1-PBS



## Basic Information

Catalog Number:

65568-1-PBS

Concentration:

1mg, 2mg/ml

Source:

Mouse

Isotype:

IgG2a

GenBank Accession Number:

BC038237

GeneID (NCBI):

3687

ENSEMBL Gene ID:

ENSG00000140678

Full Name:

integrin, alpha X (complement component 3 receptor 4 subunit)

Calculated MW:

1169 aa, 129 kDa

Purification Method:

Protein A purification

CloneNo.:

3.9

## Applications

Tested Applications:

FC

Species Specificity:

human

## Background Information

Integrins are cell adhesion receptors that are heterodimers composed of non-covalently associated  $\alpha$  and  $\beta$  subunits (PMID: 9779984). CD11c, also known as integrin  $\alpha$  X, is a type I transmembrane glycoprotein present on a variety of cells, including monocytes/macrophages, granulocytes, a subset of B cells, NK cells and dendritic cells (PMID: 2897326; 1680915; 1694698; 17389580). As a result of its high level of expression on most dendritic cells, CD11c is typically considered to be a marker of conventional dendritic cells (PMID: 27119555). CD11c forms an  $\alpha$  /  $\beta$  heterodimer with CD18 (integrin  $\beta$  2). CD11c/CD18 acts a receptor for fibrinogen and is important in monocyte adhesion and chemotaxis (PMID: 1671533).

## Storage

Storage:

Store at -80°C. Stable for one year after shipment.

**The product is shipped with ice packs. Upon receipt, store it immediately at -80°C**

Storage Buffer:

PBS Only

For technical support and original validation data for this product please contact:

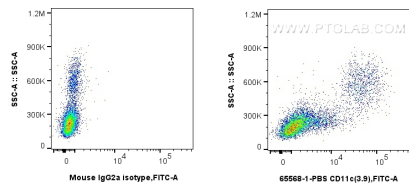
T: 4006900926

E: [Proteintech-CN@ptglab.com](mailto:Proteintech-CN@ptglab.com)

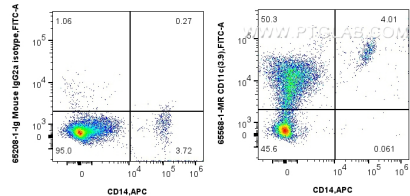
W: [ptgcn.com](http://ptgcn.com)

**This product is exclusively available under Proteintech Group brand and is not available to purchase from any other manufacturer.**

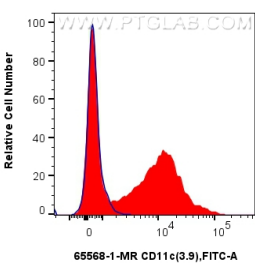
Selected Validation Data



1x10<sup>6</sup> human PBMCs were surface stained with 0.5 ug Anti-Human CD11c (3.9) Mouse IgG2a Recombinant Antibody, PBS Only (65568-1-PBS, Clone:3.9) or Mouse IgG2a Isotype Control (C1.18.4) (65208-1-Ig, Clone: C1.18.4), and CoraLite®488-Conjugated AffiniPure Goat Anti-Mouse IgG(H+L) (SA00013-1). Cells were not fixed.



1x10<sup>6</sup> human peripheral blood leukocytes were surface stained with 0.25 ug Anti-Human CD11c Mouse IgG2a Recombinant Antibody (65568-1-MR, Clone: 3.9) or Mouse IgG2a Isotype Control (65208-1-Ig, Clone: C1.18.4) and CoraLite®488-Conjugated AffiniPure Donkey Anti-Mouse IgG(H+L). Cells were then stained with APC Anti-Human CD14. Cells were incubated with FC Receptor Block prior to staining. Cells were not fixed. This data was developed using the same antibody clone.



1x10<sup>6</sup> human peripheral blood leukocytes were surface stained with 0.25 ug Anti-Human CD11c Mouse IgG2a Recombinant Antibody (65568-1-MR, Clone: 3.9) (red) or Mouse IgG2a Isotype Control (65208-1-Ig, Clone: C1.18.4) (blue) and CoraLite®488-Conjugated AffiniPure Donkey Anti-Mouse IgG(H+L). Cells were incubated with FC Receptor Block prior to staining. Cells were not fixed. This data was developed using the same antibody clone with 65568-1-PBS in a different storage buffer.