

For Research Use Only

Anti-Human CD11a (TS2/4) Mouse IgG2a Recombinant Antibody, PBS Only

Catalog Number: 65563-1-PBS



Basic Information

Catalog Number:

65563-1-PBS

Size:

1mg, 2mg/ml

Source:

Mouse

Isotype:

IgG2a

GenBank Accession Number:

BC008777

GeneID (NCBI):

3683

ENSEMBL Gene ID:

ENSG00000005844

UNIPROT ID:

P20701

Full Name:

integrin, alpha L (antigen CD11A (p180), lymphocyte function-associated antigen 1; alpha polypeptide)

Calculated MW:

129 kDa

Purification Method:

Protein A purification

CloneNo.:

TS2/4

Applications

Tested Applications:

FC

Species Specificity:

human

Background Information

CD11a, also known as integrin α L or LFA-1 α , is a 170-180 kDa transmembrane glycoprotein that forms a heterodimer with CD18 (PMID: 7027264; 1672643). CD11a/CD18 (LFA-1) is expressed by all leukocytes and mediates cell adhesion through interactions with its ligands, intercellular adhesion molecule 1 (ICAM-1), ICAM-2, and ICAM-3 (PMID: 7479767). CD11a/CD18 also functions in lymphocyte costimulatory signaling (PMID: 1972160).

Storage

Storage:

Store at -80°C. Stable for one year after shipment.

The product is shipped with ice packs. Upon receipt, store it immediately at -80°C

Storage Buffer:

PBS Only

For technical support and original validation data for this product please contact:

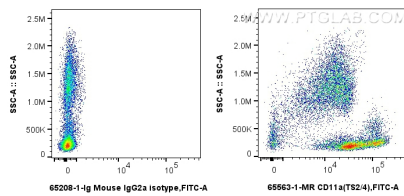
T: 4006900926

E: Proteintech-CN@ptglab.com

W: ptgcn.com

This product is exclusively available under Proteintech Group brand and is not available to purchase from any other manufacturer.

Selected Validation Data



1x10⁶ human peripheral blood leukocytes were surface stained with 0.25 ug Anti-Human CD11a Mouse IgG2a Recombinant Antibody (65563-1-MR, Clone: TS2/4) or Mouse IgG2a Isotype Control (65208-1-Ig, Clone: C1.18.4), and CoraLite®488-Conjugated AffiniPure Donkey Anti-Mouse IgG(H+L). Cells were incubated with FC Receptor Block prior to staining. Cells were not fixed. This data was developed using the same antibody clone with 65563-1-PBS in a different storage buffer

