

For Research Use Only

# Anti-Human CD163 (GHI/61) Mouse IgG2a Recombinant Antibody

Catalog Number: 65561-1-MR



## Basic Information

Catalog Number:

65561-1-MR

Size:

100ug, 1000 ug/ml

Source:

Mouse

Isotype:

IgG2a

GenBank Accession Number:

BC051281

GeneID (NCBI):

9332

ENSEMBL Gene ID:

ENSG00000177575

UNIPROT ID:

Q86VB7

Full Name:

CD163 molecule

Calculated MW:

1156 aa, 125 kDa

Purification Method:

Protein A purification

CloneNo.:

GHI/61

## Applications

Tested Applications:

FC

Species Specificity:

human

## Background Information

CD163, also known as M130, is a membrane glycoprotein that belongs to the scavenger receptor superfamily (PMID: 8370408). It is an acute phase-regulated and signal-inducing macrophage protein expressed exclusively in monocytes and tissue macrophages (PMID: 11196644). CD163 mediates endocytosis of haptoglobin-haemoglobin complexes (PMID: 11196644). The uptake of haptoglobin by macrophages contributes to the recycling of iron and also to the inflammatory response (PMID: 22900885). Soluble CD163 (sCD163), as a result of ectodomain shedding during inflammatory activation of macrophages, circulates in blood and has been suggested as a plasma/serum marker for macrophage activity (PMID: 12570164).

## Storage

Storage:

Store at 2-8°C. Stable for one year after shipment.

Storage Buffer:

PBS with 0.09% sodium azide.

For technical support and original validation data for this product please contact:

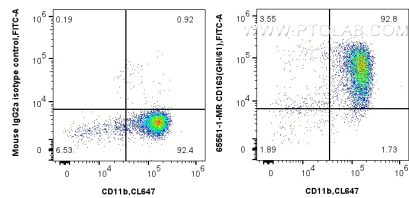
T: 4006900926

E: [Proteintech-CN@ptglab.com](mailto:Proteintech-CN@ptglab.com)

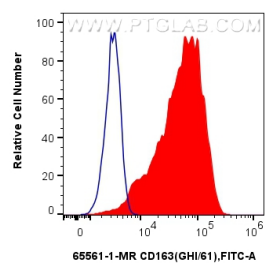
W: [ptgcn.com](http://ptgcn.com)

This product is exclusively available under Proteintech Group brand and is not available to purchase from any other manufacturer.

Selected Validation Data



1x10<sup>6</sup> human PBMCs were surface stained with 0.25 ug Anti-Human CD163 Mouse IgG2a Recombinant Antibody (65561-1-MR, Clone:GH1/61) or Mouse IgG2a Isotype Control (65208-1-Ig, Clone: C1.18.4), and CoraLite®488-Conjugated AffiniPure Donkey Anti-Mouse IgG(H+L). Cells were then stained with CoraLite® Plus 647 Anti-Human CD11b. Cells were incubated with FC Receptor Block prior to staining. Cells were not fixed. Monocytes were gated.



1x10<sup>6</sup> human PBMCs were surface stained with 0.25 ug Anti-Human CD163 Mouse IgG2a Recombinant Antibody (65561-1-MR, Clone:GH1/61) (red) or Mouse IgG2a Isotype Control (65208-1-Ig, Clone: C1.18.4) (blue), and CoraLite®488-Conjugated AffiniPure Donkey Anti-Mouse IgG(H+L). Cells were incubated with FC Receptor Block prior to staining. Cells were not fixed. Monocytes were gated.