

For Research Use Only

# Anti-Mouse Ly-6C (HK1.4)

Catalog Number: 65296-1-Ig



## Basic Information

Catalog Number:

65296-1-Ig

Size:

100ug, 0.5 mg/ml

Source:

Rat

Isotype:

IgG2c

GenBank Accession Number:

BC010764

GeneID (NCBI):

17067

Full Name:

Lymphocyte antigen 6 complex, locus

C1

Purification Method:

Affinity purification

CloneNo.:

HK1.4

## Applications

Tested Applications:

FC

Species Specificity:

Mouse

## Background Information

Ly-6C (lymphocyte antigen 6 complex, locus C) is a 14-17 kDa GPI-linked cell surface antigen that belongs to the Ly-6 family of glycosyl phosphatidylinositol-anchored surface glycoproteins (PMID: 9192663). Ly-6C is expressed on mouse monocytes/macrophages, endothelial cells, granulocytes, thymocytes, and some T cell subsets (PMID: 2849552). The two alleles of Ly-6C, Ly-6C.1 and Ly-6C.2, result in differential expression of this protein on subpopulations of CD4+ T cells (PMID: 15057973; 9126982). Ly-6C has been reported as a marker of memory CD8+ T cells (PMID: 7543536).

## Storage

Storage:

Store at 2-8°C. Stable for one year after shipment.

Storage Buffer:

PBS with 0.09% sodium azide.

For technical support and original validation data for this product please contact:

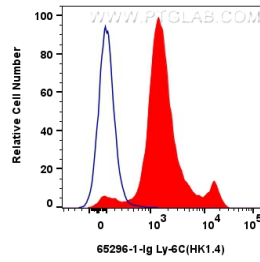
T: 4006900926

E: [Proteintech-CN@ptglab.com](mailto:Proteintech-CN@ptglab.com)

W: [ptgcn.com](http://ptgcn.com)

This product is exclusively available under Proteintech Group brand and is not available to purchase from any other manufacturer.

## Selected Validation Data



$1 \times 10^6$  mouse bone marrow cells were surface stained with 0.4  $\mu$ g Anti-Mouse Ly-6C (HK1.4) (65296-1-Ig, Clone: HK1.4) and CoraLite®488-Conjugated AffiniPure Goat Anti-Mouse IgG(H+L) (SA00013-1) (red), or 0.4  $\mu$ g Isotype Control (blue). Cells were not fixed.