

For Research Use Only

Anti-Human IL-12 p35 (1E12H6)

Catalog Number: 65277-1-Ig



Basic Information

| | | | | | |
|---------------------------|-------------------|---------------------------|---|----------------------|-----------------------|
| Catalog Number: | 65277-1-Ig | GenBank Accession Number: | BC104982 | Purification Method: | Affinity purification |
| Concentration: | 100ug, 1000 µg/ml | GeneID (NCBI): | 3592 | CloneNo.: | 1E12H6 |
| Source: | Mouse | Full Name: | interleukin 12A (natural killer cell stimulatory factor 1, cytotoxic lymphocyte maturation factor 1, p35) | | |
| Isotype: | IgG1 | Calculated MW: | 25 kDa | | |
| Immunogen Catalog Number: | HZ-1256 | | | | |

Applications

Tested Applications:
FC (Intra)

Species Specificity:
human

Background Information

IL-12 is a heterodimeric cytokine composed of two glycosylated and disulfide-linked subunits (p40 cysteine-linked to p35). IL-12 is a potent regulator of cell mediated immune responses and it induces IFN-gamma production by NK and T cells. It is produced by activated monocytes/macrophage cells, B lymphocytes, and connective tissue type mast cells (PMID: 24821971; 7612223).

Storage

Storage:
Store at 2-8°C. Avoid exposure to light. Stable for one year after shipment.

Storage Buffer:
PBS with 0.09% sodium azide, pH7.3

For technical support and original validation data for this product please contact:

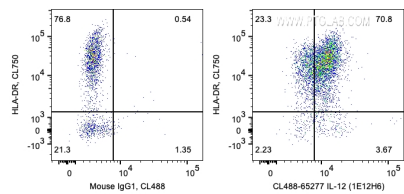
T: 4006900926

E: Proteintech-CN@ptglab.com

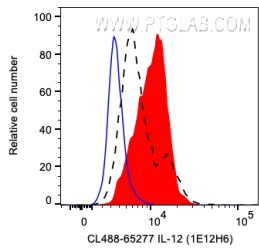
W: ptgcn.com

This product is exclusively available under Proteintech Group brand and is not available to purchase from any other manufacturer.

Selected Validation Data



1X10⁶ LPS and Brefeldin A treated human PBMCs were surface stained with CoraLite® Plus 750 Anti-Human HLA-DR then intracellularly stained with 0.2 ug CoraLite® Plus 488 Anti-Human IL-12 (CL488-65277, Clone:1E12H6) or Mouse IgG1 Isotype Control. Cells were fixed and permeabilized with Transcription Factor Staining Buffer Kit (PF00011). Monocytes were gated. This data was developed using the CoraLite® Plus 488 conjugated antibody of 65277-1-Ig.



1X10⁶ LPS and Brefeldin A treated human PBMCs were intracellularly stained with 0.2 ug CoraLite® Plus 488 Anti-Human IL-12 (CL488-65277, Clone:1E12H6) (red) or Mouse IgG1 Isotype Control (blue), or unstimulated and Brefeldin A treated human PBMCs were intracellularly stained with 0.2 ug CoraLite® Plus 488 Anti-Human IL-12 (CL488-65277, Clone:1E12H6) (black, dashed line). Cells were fixed and permeabilized with Transcription Factor Staining Buffer Kit